



AUDIOLOGY SURVEY 2006



Annual Salaries

Jeanette Janota
Surveys and Information Team

6276

American Speech-Language-Hearing Association
10801 Rockville Pike
Rockville, MD 20852
800-498-2071, ext. 4175
jjanota@asha.org

Contents

Executive Summary	1
Respondents.....	2
Salary Basis	2
Academic or Calendar Year.....	2
Primary Employment Facility	3
Salaries	3
Primary Employment Facility	3
Primary Employment Function	4
Highest Degree	5
Years of Experience.....	6
Sex	6
Region of the Country	7
Population Setting.....	8
Private Practice	8
Survey Notes and Methodology	9
Response Rate.....	9
Other Reports	9
Electronic Copy.....	9
Suggested Citation.....	10
Supplemental Sources.....	10
Additional Information	10
Appendix	11
Regions of the Country	12
Table 1: Salary Basis	13
Table 2: Academic Year or Calendar Year	13
Table 3: Facilities	14
Table 4: Salaries by Facility	15
Table 5a: Calendar Year Salaries by Function	16
Table 5b: Academic Year Salaries by Function.....	18
Table 6a: Calendar Year Salaries by Highest Degree	20
Table 6b: Academic Year Salaries by Highest Degree	22
Table 7: Median Calendar Year Salaries by Years of Experience.....	24
Table 8: Median Calendar Year Salaries by Sex	25
Table 9a: Median Calendar Year Salaries by Region of the Country	26

Table 9b: Median Academic Year Salaries by Region of the Country.....27
Table 10: Calendar Year Salaries by Population Setting28
Table 11: Calendar Year Salaries in Private Practice30

Figures

Figure 1: Annual or Hourly Salary2
Figure 2: Employment Facility3
Figure 3: Median Calendar Year Salaries by Primary Employment Facility.....3
Figure 4: Median Salary by Primary Employment Function4
Figure 5: Median Salary by Highest Degree.....5
Figure 6: Median Calendar Year Salaries by Years of Experience.....6
Figure 7: Median Calendar Year Salaries by Geographic Region7

Executive Summary

In the fall of 2006, the American Speech-Language-Hearing Association (ASHA) conducted a survey of audiologists. This survey was designed to provide information about salaries, working conditions, and service delivery and to update and expand information gathered from previous Audiology and Omnibus Surveys.

The results are presented in a series of reports. This salary report is based on responses from audiologists in special schools, colleges and universities, hospitals, private physicians' offices, and other nonresidential health care facilities

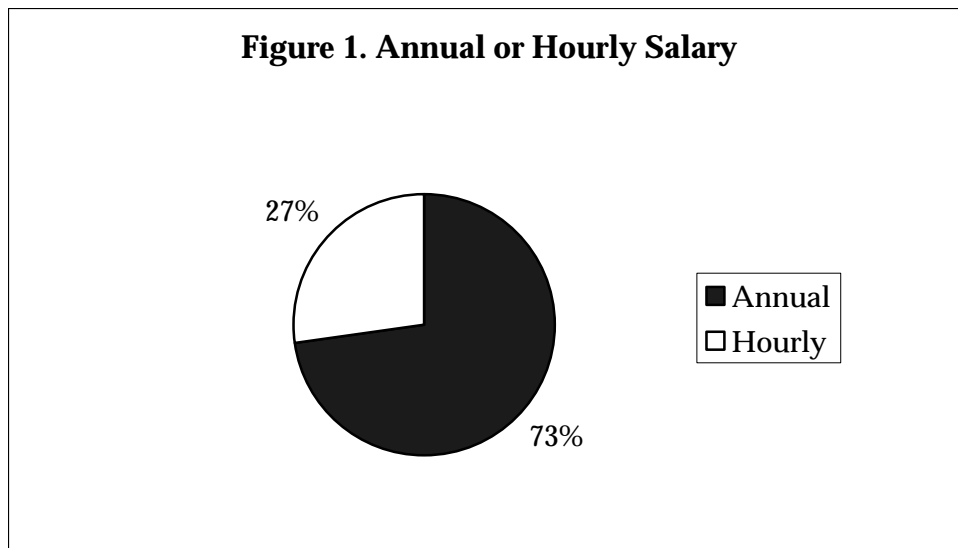
Highlights:

- ◆ 73% worked for an annual salary.
- ◆ Median salary for working 11 or 12 months (calendar year) was \$65,000.
- ◆ Median calendar year salary was:
 - \$60,000 for clinical service providers, \$70,000 for university faculty, and \$85,000 for administrators
 - \$60,000 for those with a master's degree
 - \$52,000 with 1–3 years of experience
 - \$70,000 in the Northeast
 - \$65,000 in metropolitan/urban areas
 - \$85,000 for private practice owners
 - \$60,000 for females and \$79,000 for males

Respondents

Salary Basis

The data in this report were gathered from the 2,354 audiologists who responded to the 2006 Audiology Survey. Of that group, 1,591 (73%) reported that they worked for an annual salary and 592 (27%) for an hourly wage (see Figure 1 and Appendix Table 1).



$n = 2,182$

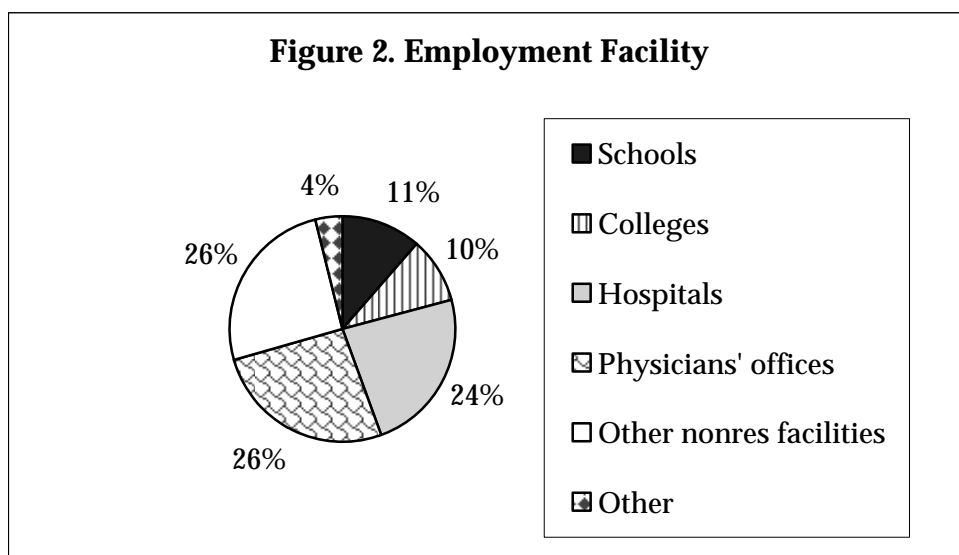
Academic or Calendar Year

Most (84%) of the audiologists reported that they worked 11 to 12 months (i.e., a calendar year; see Appendix Table 2). Because the number of respondents who worked for an academic year (262) is relatively small, analyzing them according to some demographic characteristics (e.g., years of experience) would result in table cells smaller than 25 individuals, the minimum reportable response size. Therefore, most of the analyses in this report will be limited to audiologists who worked for a **calendar year** and were paid an **annual salary**. A separate report will provide information on hourly wage earners.

Salaries have traditionally been presented in ASHA reports as a function of various demographic characteristics: facilities, years of experience, region of the country, etc. A stratified random sample was used to select 4,000 ASHA-certified audiologists for this survey. They were stratified on the basis of type of facility. Because facilities with fewer audiologists (such as schools) were oversampled and those with many (e.g., hospitals) were undersampled, **weighting** was used when presenting data for the **total** group of respondents to restore all groups to their actual proportion in the population of ASHA audiologists.

Primary Employment Facility

Approximately one quarter of the respondents worked in hospitals (24%), another quarter in private physicians' offices (26%), and another in other nonresidential health care facilities (26%), with most of the remainder in schools and colleges or universities. A few (4%) selected an "other" category (see Figure 2, Appendix Table 3). Data for the first five types of facilities will be shown separately in subsequent analyses.

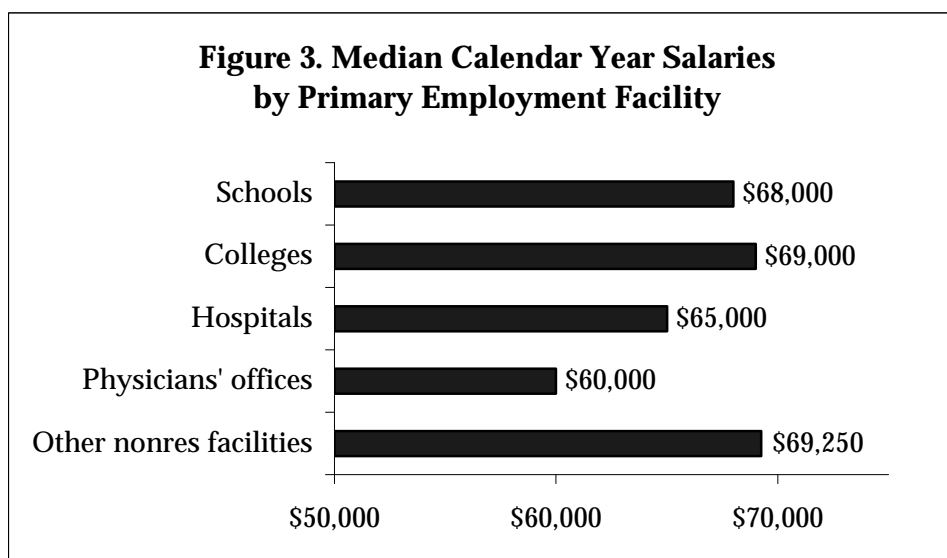


n = 2,232

Salaries

Primary Employment Facility

The median **calendar** year salary was **\$65,000** (see Appendix Table 4), ranging from \$60,000 in private physicians' offices to \$69,250 in other nonresidential health care facilities (see Figure 3).

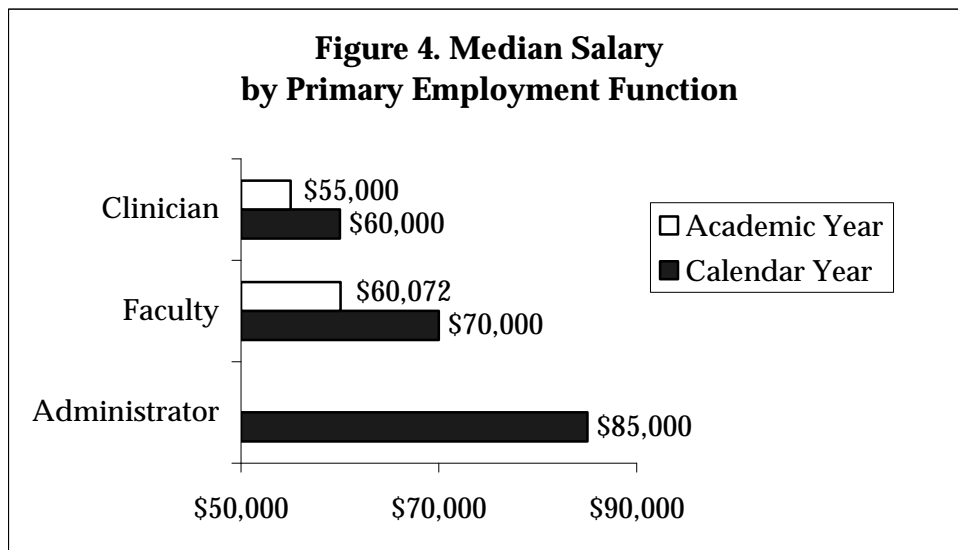


n = 1,160

*Primary
Employment
Function*

Median salaries for an **academic** year were \$55,000 in schools and \$60,072 in colleges and universities (see Appendix Table 4).

The overwhelming majority (82%) of respondents were employed as clinical service providers. (Data do not appear in any table.) Median **calendar** year salaries were \$60,000 for clinical service providers, \$70,000 for college and university faculty members, and \$85,000 for administrators (see Figure 4).



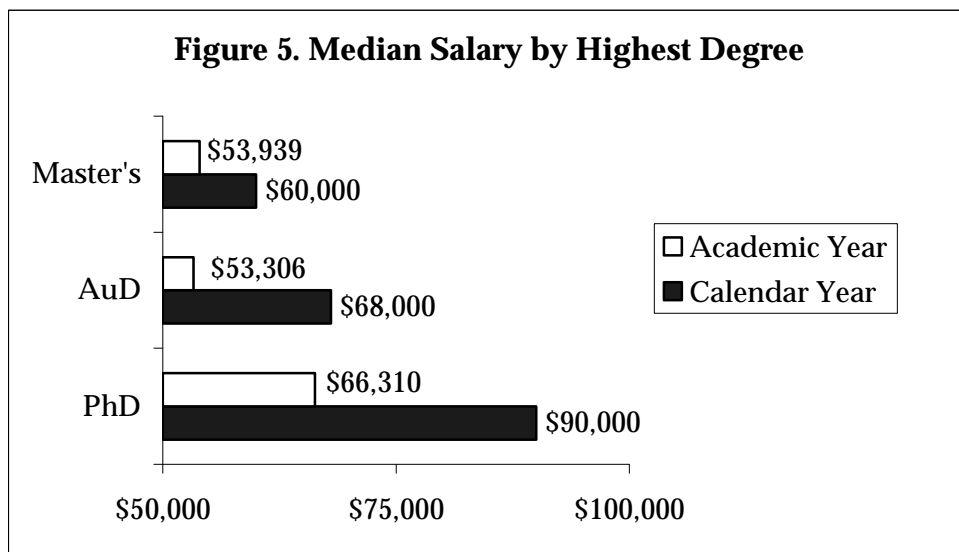
n = 1,300

See Tables 5a and 5b in the Appendix for salaries for specific employment facilities such as those below:

- In the **schools**, the majority reported that they were **clinical service providers** and worked for an **academic** year. Their median salary was **\$55,000**.
- In **colleges and universities**, the majority were **faculty** and worked for an **academic** year for a median salary of **\$60,143**.
- In **hospitals** and **private physicians' offices**, most worked as **clinical service providers** for a **calendar** year for a median salary of **\$60,000**.
- In **other types of nonresidential health care facilities**, most worked for a **calendar** year as **clinical service providers** and received a median salary of **\$65,000**.

Highest Degree

Audiologists who were employed for a **calendar** year reported a median salary of \$60,000 with a master’s, \$68,000 with an AuD, and \$90,000 with a PhD. For those who worked for an **academic** year, the difference between holding a master’s or an AuD was negligible (see Figure 6).



n = 1,361

Median **calendar** year salaries by highest degree and type of facility ranged...

- from \$56,000 in private physician’s offices to \$62,200 in schools for those with a **master’s**;
- from \$65,000 in private physician’s offices to \$75,000 in other nonresidential health care facilities with an **AuD**;
- from \$80,000 in colleges and universities to \$97,000 in hospitals with a **PhD** (see Appendix Table 6a).

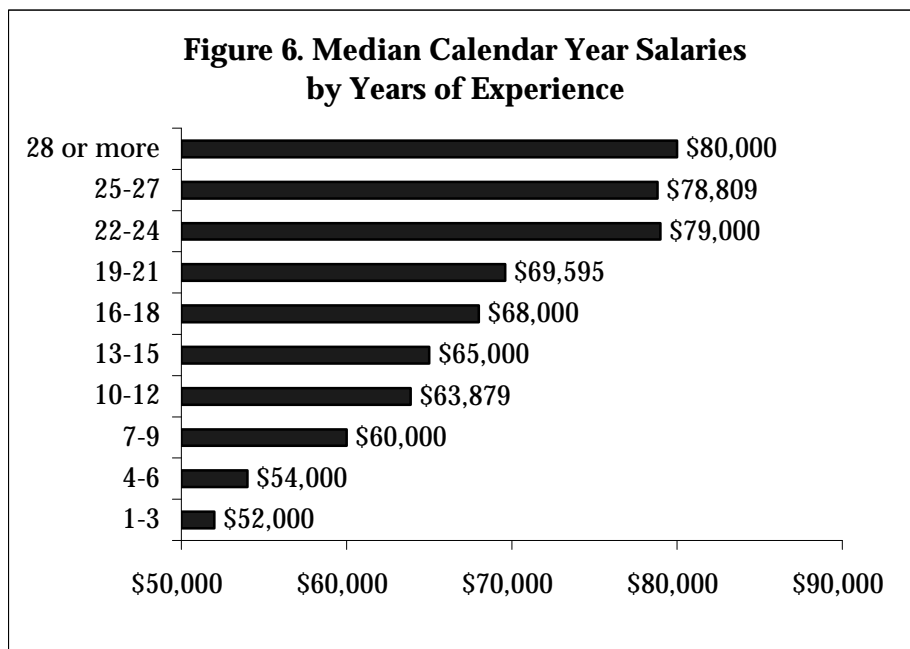
Few **academic** year salaries are reportable by highest degree because of the small number of respondents (see Appendix Table 6b).

- The median in **schools**, with a master’s, was \$54,500.
- The median in **colleges and universities**, with a PhD, was \$66,500.



Years of Experience

Median **calendar** year salaries tend to increase with experience, although not in a straight line. Beginning salaries, for audiologists who had **1–3 years** of experience, were **\$52,000**. With **28 or more years** of experience, the median was **\$80,000**. There was little change in medians after 22–24 years of experience (see Figure 6 and Appendix Table 7).



n = 1,155

Sex

The median **calendar** year salary was **\$60,000** for **females** and **\$79,000** for **males**. The highest median salary for females was in schools (\$63,250), while the highest for males was in other nonresidential health care facilities (\$85,000; see Appendix Table 8).

As has been shown above, employment function, highest degree, and years of experience have an effect on salaries. Among the respondents to this survey, males were more likely than females to be in categories associated with higher salaries.

- Function:
 - 6% of males and 4% of females were college/university faculty
 - 14% of males and 10% of females were administrators
- Highest degree:
 - 57% of males and 40% of females held a doctoral degree

Region of the Country

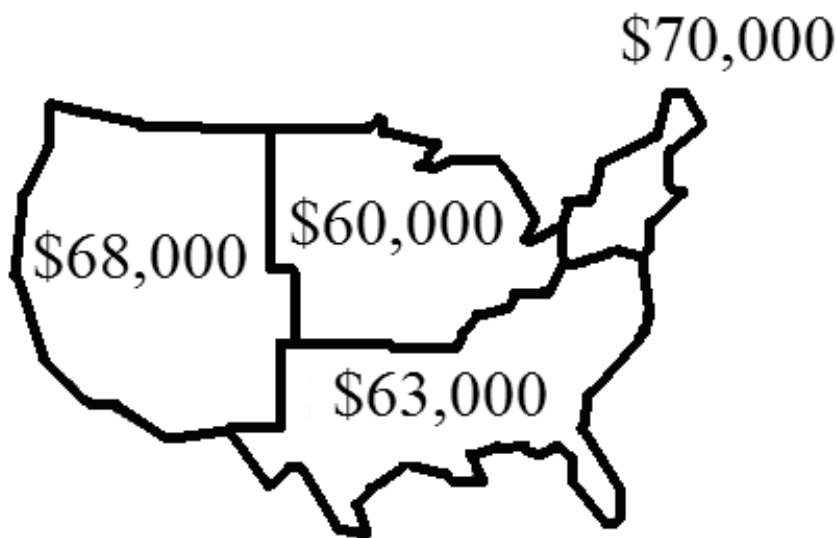
- Years of experience:
 - Average (mean) number of years of experience was 22 for males, 15 for females.

Overall, **calendar** year salaries were highest in the Northeast (\$70,000) and lowest in the Midwest (\$60,000).

- The highest average salaries for **hospital-based** audiologists were in the **Northeast** and **West** (\$72,000).
- The highest median salaries for audiologists employed in **private physicians' offices** were in the **West** (\$64,000).
- The highest median salary in **other nonresidential health care facilities** was in the **Northeast** (\$73,000; see Appendix Table 9a).

Academic year salaries ranged from \$55,072 in the West to \$59,795 in the Northeast (see Appendix Table 9b).

Figure 7. Median Calendar Year Salaries by Geographic Region



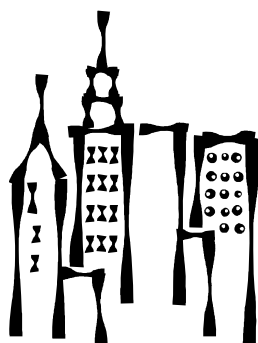
$n = 1,157$

Population Setting

Median **calendar** year salaries varied by population setting.

- \$65,000 in metropolitan/urban areas
- \$63,210 in the suburbs
- \$60,271 in rural areas (see Appendix Table 10)

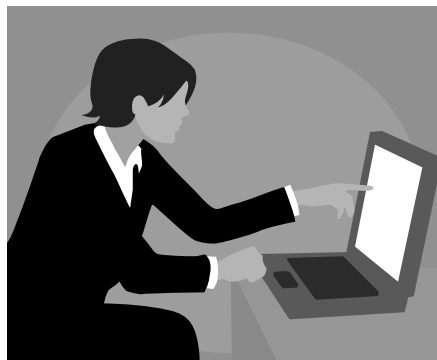
In hospitals, median salaries were lower in rural areas (\$60,000) than in either cities (\$64,480) or suburbs (\$70,000). In other residential health care facilities, the lowest median salaries were in the suburbs (\$62,721; see Appendix Table 10).



Private Practice

Private practice **owners** reported a median **calendar** year salary of \$85,000. Audiologists who were employed full-time as **salaried employees** in a private practice reported median salaries of \$60,000 (see Appendix Table 11).

Additional data on audiologists employed in private practice can be found in a separate report.



Survey Notes and Method- ology

Response Rate

The 20-year-old ASHA Omnibus Survey has been retired, replaced by surveys specific to work settings and/or professions in order to better meet affiliates' needs. This 2006 Audiology Survey is one of the replacements and melds topics from both the Omnibus Surveys and previous Audiology Surveys.

The survey was mailed in September 2006 to a random sample of 4,000 ASHA-certified audiologists in the United States who worked in schools, colleges or universities, hospitals, or other nonresidential health care facilities. Second and third mailings followed, at approximately 4-week intervals, to individuals who had not responded to earlier mailings.

Of the original 4,000 audiologists in the sample, 7 were no longer employed in the field, 5 were retired, and 3 were ineligible for other reasons, leaving 3,985 possible respondents. The actual number of respondents was 2,354, resulting in a 59.1% response rate. The results presented in this report are based on responses from those 2,354 individuals.

Other Reports

Results from the 2006 Audiology Survey are reported in a series of reports:

- Annual Salaries
- Hourly Salaries
- Clinical Focus Patterns
- Private Practice
- Frequency Report
- Survey Methodology, Respondent Demographics, and Glossary

Electronic Copy

An electronic copy of this report will be available for a limited time on the ASHA Web site at <http://www.asha.org/about/membership-certification/member-data/member-counts.htm>.

Suggested Citation

American Speech-Language-Hearing Association. (2006). *2006 Audiology Survey report: Annual salaries*. Rockville, MD: Author.

Supplemental Sources

Salary data may also be available from other sources, such as state associations and state departments of labor. Suggested Web sites include the following:

<http://www.bls.gov/bls/blswage.htm> (where audiologists are classified as category 29-1121)

<http://www.bls.gov/oco/>

<http://www.ama-assn.org/ama/pub/category/6038.html>

<http://www.capcsd.org/survey/2004/CAPCSD2003-2004SalarySurvey.pdf>

www.salary.com

To compare costs of living:

<http://www.homefair.com/homefair/calc/salcalc.html>

http://www.bestplaces.net/html/cost_of_living.html



Additional Information

For additional information regarding the 2006 Audiology Survey, please contact Pam Mason, Director of ASHA's Audiology Professional Practices, at 301-897-5700, ext. 4135, pmason@asha.org. To learn more about how the Association is working on behalf of ASHA-certified audiologists, members may visit ASHA's Web site at <http://www.asha.org/members/aud/default>.

Appendix

Regions of the Country

Northeast

- ◆ Middle Atlantic
 - New Jersey
 - New York
 - Pennsylvania
- ◆ New England
 - Connecticut
 - Maine
 - Massachusetts
 - New Hampshire
 - Rhode Island
 - Vermont

South

- ◆ East South Central
 - Alabama
 - Kentucky
 - Mississippi
 - Tennessee
- ◆ South Atlantic
 - Delaware
 - District of Columbia
 - Florida
 - Georgia
 - Maryland
 - North Carolina
 - South Carolina
 - Virginia
 - West Virginia
- ◆ West South Central
 - Arkansas
 - Louisiana
 - Oklahoma
 - Texas

Midwest

- ◆ East North Central
 - Illinois
 - Indiana
 - Michigan
 - Ohio
 - Wisconsin
- ◆ West North Central
 - Iowa
 - Kansas
 - Minnesota
 - Missouri
 - Nebraska
 - North Dakota
 - South Dakota

West

- ◆ Mountain
 - Arizona
 - Colorado
 - Idaho
 - Montana
 - Nevada
 - New Mexico
 - Utah
 - Wyoming
- ◆ Pacific
 - Alaska
 - California
 - Hawaii
 - Oregon
 - Washington

Table 1: Salary Basis

Q. 8 In your primary job, are you paid on an annual or an hourly basis? Analyses limited to respondents who met the following criterion: ❖ CCC-A		
Response	Frequency	Valid Percentage
Annual salary	1,591	72.9
Hourly rate	592	27.1
Total	2,182	

Table 2: Academic Year or Calendar Year

Q.10 For what period of work is this salary? (If you work for 9-10 months, as in an academic setting, but are paid over a 12-month period, select response "Work 9-10 months.") (Percentages) Analyses limited to respondents who met the following criterion: ❖ CCC-A		
Response	Frequency	Valid Percentage
Worked an Academic Year (9–10 months)	262	16.2
Calendar Year (11–12 months)	1,362	83.8
Total	1,624	

Table 3: Facilities

Q.7 Primary Employment Facility... (In the space below, write the number of the one facility that best describes where you worked most of the time in your typical week. For individuals engaged in *private practice*, indicate the type of facility in which you deliver most of your services. (Percentages)

Analyses limited to respondents who met the following criterion:

❖ CCC-A

Facility	Unweighted* (n = 2,232)
School	11.3
College/university	9.6
Hospital facility	23.6
Private physician's office	26.2
Other nonresidential health care facility	25.6
Other	3.8

Table 4: Salaries by Facility

Q. 9 If you are paid on an annual salary basis, indicate the gross annual salary associated with your principal professional employment as of that date. (Include your annual salary before all deductions but do not include monies earned for work that is not a usual part of your principal professional employment. Bonuses and commissions should be included.) (Gross annual salary, Sept. 2006.)

Analyses limited to respondents who met the following criteria:

- ❖ CCC-A
- ❖ Employed full-time
- ❖ Annual salary of at least \$1

	Total	Schools	Colleges/ Universities	Hospitals	Private Physicians' Offices	Other Non- residential Health Care Facilities
Calendar Year (11–12 months)						
	(n = 1,160)	(n = 50)	(n = 89)	(n = 295)	(n = 293)	(n = 358)
25 th percentile	\$53,000	\$53,030	\$54,500	\$55,000	\$50,000	\$52,375
50 th percentile (median)	\$65,000	\$68,000	\$69,000	\$65,000	\$60,000	\$69,250
75 th percentile	\$80,037	\$75,250	\$83,000	\$80,000	\$72,000	\$99,250
Academic Year (9–10 months)						
	(n = 219)	(n = 142)	(n = 84)	(n = 1)	(n = 3)	(n = 5)
25 th percentile	\$48,871	\$47,375	\$52,000	n < 25	n < 25	n < 25
50 th percentile (median)	\$56,000	\$55,000	\$60,072			
75 th percentile	\$67,000	\$65,000	\$70,000			

Table 5a: Calendar Year Salaries by Function

Q. 9 If you are paid on an annual salary basis, indicate the gross annual salary associated with your principal professional employment as of that date. (Include your annual salary before all deductions but do not include monies earned for work that is not a usual part of your principal professional employment. Bonuses and commissions should be included.) (Gross annual salary, Sept. 2006.)

Analyses limited to respondents who met the following criteria:

- ❖ CCC-A
- ❖ Employed full-time
- ❖ Employed for a calendar year
- ❖ Annual salary of at least \$1

	Total	Schools	Colleges/ Universities	Hospitals	Private Physicians' Offices	Other Non- residential Health Care Facilities
Clinical Service Provider						
	(n = 929)	(n = 40)	(n = 13)	(n = 229)	(n = 279)	(n = 325)
25 th percentile	\$52,000	\$52,000	n < 25	\$53,000	\$50,000	\$50,000
50 th percentile (median)	\$60,000	\$63,250		\$60,000	\$60,000	\$65,000
75 th percentile	\$76,000	\$72,000		\$72,000	\$70,000	\$91,000
College/University Faculty						
	(n = 49)	(n = 0)	(n = 54)	(n = 1)	(n = 0)	(n = 0)
25 th percentile	\$58,968	n < 25	\$58,750	n < 25	n < 25	n < 25
50 th percentile (median)	\$70,000		\$70,000			
75 th percentile	\$83,641		\$84,000			

Table 5a Continued: Calendar Year Salaries by Function

Q. 9 If you are paid on an annual salary basis, indicate the gross annual salary associated with your principal professional employment as of that date. (Include your annual salary before all deductions but do not include monies earned for work that is not a usual part of your principal professional employment. Bonuses and commissions should be included.) (Gross annual salary, Sept. 2006.)

Analyses limited to respondents who met the following criteria:

- ❖ CCC-A
- ❖ Employed full-time
- ❖ Employed for a calendar year
- ❖ Annual salary of at least \$1

	Total	Schools	Colleges/ Universities	Hospitals	Private Physicians' Offices	Other Non- residential Health Care Facilities
Administrator						
	(n = 128)	(n = 6)	(n = 16)	(n = 54)	(n = 13)	(n = 25)
25 th percentile	\$70,096	n < 25	n < 25	\$73,625	n < 25	\$71,500
50 th percentile (median)	\$85,000			\$85,199		\$87,500
75 th percentile	\$111,855			\$117,625		\$116,500

Table 5b: Academic Year Salaries by Function

Q. 9 If you are paid on an annual salary basis, indicate the gross annual salary associated with your principal professional employment as of that date. (Include your annual salary before all deductions but do not include monies earned for work that is not a usual part of your principal professional employment. Bonuses and commissions should be included.) (Gross annual salary, Sept. 2006.)

Analyses limited to respondents who met the following criteria:

- ❖ CCC-A
- ❖ Employed full-time
- ❖ Employed for an academic year
- ❖ Annual salary of at least \$1

	Total	Schools	Colleges/ Universities	Hospitals	Private Physicians' Offices	Other Non- residential Health Care Facilities
Clinical Service Provider						
	(n = 125)	(n = 120)	(n = 3)	(n = 0)	(n = 2)	(n = 4)
25 th percentile	\$47,151	\$47,125	n < 25	n < 25	n < 25	n < 25
50 th percentile (median)	\$55,000	\$55,000				
75 th percentile	\$64,000	\$64,000				
College/University Faculty						
	(n = 69)	(n = 0)	(n = 77)	(n = 0)	(n = 1)	(n = 0)
25 th percentile	\$52,000	n < 25	\$52,000	n < 25	n < 25	n < 25
50 th percentile (median)	\$60,072		\$60,143			
75 th percentile	\$70,000		\$70,000			

Table 5b Continued: Academic Year Salaries by Function

Q. 9 If you are paid on an annual salary basis, indicate the gross annual salary associated with your principal professional employment as of that date. (Include your annual salary before all deductions but do not include monies earned for work that is not a usual part of your principal professional employment. Bonuses and commissions should be included.) (Gross annual salary, Sept. 2006.)

Analyses limited to respondents who met the following criteria:

- ❖ CCC-A
- ❖ Employed full-time
- ❖ Employed for an academic year
- ❖ Annual salary of at least \$1

	Total	Schools	Colleges/ Universities	Hospitals	Private Physicians' Offices	Other Non- residential Health Care Facilities
Administrator						
	(n = 4)	(n = 1)	(n = 3)	(n = 0)	(n = 0)	(n = 0)
25 th percentile	n < 25	n < 25	n < 25	n < 25	n < 25	n < 25
50 th percentile (median)						
75 th percentile						

Table 6a: Calendar Year Salaries by Highest Degree

Q. 9 If you are paid on an annual salary basis, indicate the gross annual salary associated with your principal professional employment as of that date. (Include your annual salary before all deductions but do not include monies earned for work that is not a usual part of your principal professional employment. Bonuses and commissions should be included.) (Gross annual salary, Sept. 2006.)

Analyses limited to respondents who met the following criteria:

- ❖ CCC-A
- ❖ Employed full-time
- ❖ Employed for a calendar year
- ❖ Annual salary of at least \$1

	Total	Schools	Colleges/ Universities	Hospitals	Private Physicians' Offices	Other Non- residential Health Care Facilities
Master's Degree						
	(n = 640)	(n = 34)	(n = 24)	(n = 156)	(n = 201)	(n = 187)
25 th percentile	\$50,000	\$52,000	n < 25	\$52,000	\$50,000	\$49,500
50 th percentile (median)	\$60,000	\$62,200		\$60,100	\$56,000	\$60,000
75 th percentile	\$72,000	\$72,000		\$72,000	\$70,000	\$82,000
AuD Degree						
	(n = 384)	(n = 13)	(n = 20)	(n = 96)	(n = 84)	(n = 141)
25 th percentile	\$57,000	n < 25	n < 25	\$57,000	\$56,950	\$58,500
50 th percentile (median)	\$68,000			\$66,750	\$65,000	\$75,000
75 th percentile	\$85,000			\$77,750	\$80,000	\$100,000

Table 6a Continued: Calendar Year Salaries by Highest Degree

Q. 9 If you are paid on an annual salary basis, indicate the gross annual salary associated with your principal professional employment as of that date. (Include your annual salary before all deductions but do not include monies earned for work that is not a usual part of your principal professional employment. Bonuses and commissions should be included.) (Gross annual salary, Sept. 2006.)

Analyses limited to respondents who met the following criteria:

- ❖ CCC-A
- ❖ Employed full-time
- ❖ Employed for a calendar year
- ❖ Annual salary of at least \$1

	Total	Schools	Colleges/ Universities	Hospitals	Private Physicians' Offices	Other Non- residential Health Care Facilities
PhD Degree						
	(n = 124)	(n = 0)	(n = 45)	(n = 39)	(n = 6)	(n = 27)
25 th percentile	\$73,051	n < 25	\$70,000	\$79,000	n < 25	\$73,000
50 th percentile (median)	\$90,000		\$80,000	\$97,000		\$95,000
75 th percentile	\$120,000		\$97,500	\$130,000		\$180,000

Table 6b: Academic Year Salaries by Highest Degree

Q. 9 If you are paid on an annual salary basis, indicate the gross annual salary associated with your principal professional employment as of that date. (Include your annual salary before all deductions but do not include monies earned for work that is not a usual part of your principal professional employment. Bonuses and commissions should be included.) (Gross annual salary, Sept. 2006.)

Analyses limited to respondents who met the following criteria:

- ❖ CCC-A
- ❖ Employed full-time
- ❖ Employed for an academic year
- ❖ Annual salary of at least \$1

	Total	Schools	Colleges/ Universities	Hospitals	Private Physicians' Offices	Other Non- residential Health Care Facilities
Master's Degree						
	(n = 126)	(n = 114)	(n = 13)	(n = 0)	(n = 2)	(n = 3)
25 th percentile	\$45,826	\$46,863	n < 25	n < 25	n < 25	n < 25
50 th percentile (median)	\$53,939	\$54,500				
75 th percentile	\$62,000	\$62,500				
AuD Degree						
	(n = 37)	(n = 24)	(n = 14)	(n = 0)	(n = 0)	(n = 2)
25 th percentile	\$48,000	n < 25	n < 25	n < 25	n < 25	n < 25
50 th percentile (median)	\$53,306					
75 th percentile	\$62,879					

Table 6b Continued: Academic Year Salaries by Highest Degree

Q. 9 If you are paid on an annual salary basis, indicate the gross annual salary associated with your principal professional employment as of that date. (Include your annual salary before all deductions but do not include monies earned for work that is not a usual part of your principal professional employment. Bonuses and commissions should be included.) (Gross annual salary, Sept. 2006.)

Analyses limited to respondents who met the following criteria:

- ❖ CCC-A
- ❖ Employed full-time
- ❖ Employed for an academic year
- ❖ Annual salary of at least \$1

	Total	Schools	Colleges/ Universities	Hospitals	Private Physicians' Offices	Other Non- residential Health Care Facilities
PhD Degree						
	(n = 50)	(n = 1)	(n = 53)	(n = 1)	(n = 1)	(n = 0)
25 th percentile	\$59,311	n < 25	\$59,500	n < 25	n < 25	n < 25
50 th percentile (median)	\$66,310		\$66,500			
75 th percentile	\$79,455		\$77,500			

Table 7: Median Calendar Year Salaries by Years of Experience

Q. 9 If you are paid on an annual salary basis, indicate the gross annual salary associated with your principal professional employment as of that date. (Include your annual salary before all deductions but do not include monies earned for work that is not a usual part of your principal professional employment. Bonuses and commissions should be included.) (Gross annual salary, Sept. 2006.)

Analyses limited to respondents who met the following criteria:

- ❖ CCC-A
- ❖ Employed full-time
- ❖ Worked for a calendar year
- ❖ Annual salary of at least \$1

Years Experience	Total		Schools	Colleges/ Universities	Hospitals	Private Physicians' Offices	Other Non- residential Health Care Facilities	
	<i>n</i>	Salary	(<i>n</i> = 49)	(<i>n</i> = 89)	(<i>n</i> = 294)	(<i>n</i> = 293)	(<i>n</i> = 357)	
1-3 years	76	\$52,000	<i>n</i> < 25	<i>n</i> < 25	<i>n</i> < 25	\$52,000	<i>n</i> < 25	
4-6 years	201	\$54,000			\$50,000	\$53,500	\$55,000	
7-9 years	113	\$60,000			\$55,000	\$55,000	\$60,000	
10-12 years	103	\$63,879			\$85,000	\$63,000	\$60,000	
13-15 years	88	\$65,000			\$70,000	\$68,000	<i>n</i> < 25	
16-18 years	81	\$68,000			\$66,500		\$68,750	
19-21 years	86	\$69,595			\$66,500	\$81,000	\$65,000	\$85,000
22-24 years	74	\$79,000						\$70,000
25-27 years	109	\$78,809					<i>n</i> < 25	\$84,500
28 or more years	224	\$80,000			\$75,000	\$72,000	\$71,000	\$85,000

Table 8: Calendar Year Salaries by Sex

Q. 9 If you are paid on an annual salary basis, indicate the gross annual salary associated with your principal professional employment as of that date. (Include your annual salary before all deductions but do not include monies earned for work that is not a usual part of your principal professional employment. Bonuses and commissions should be included.) (Gross annual salary, Sept. 2006.)

Analyses limited to respondents who met the following criteria:

- ❖ CCC-A
- ❖ Employed full-time
- ❖ Employed for calendar year
- ❖ Annual salary of at least \$1

	Total	Schools	Colleges/ Universities	Hospitals	Private Physicians' Offices	Other Non- residential Health Care Facilities
Female						
	(n = 867)	(n = 42)	(n = 62)	(n = 239)	(n = 243)	(n = 233)
25 th percentile	\$51,348	\$52,000	\$50,750	\$53,500	\$50,000	\$50,000
50 th percentile (median)	\$60,000	\$63,250	\$60,000	\$63,000	\$60,000	\$60,000
75 th percentile	\$75,000	\$74,250	\$78,500	\$75,000	\$70,000	\$84,500
Male						
	(n = 290)	(n = 8)	(n = 27)	(n = 55)	(n = 50)	(n = 124)
25 th percentile	\$62,300	n < 25	\$67,000	\$67,000	\$58,500	\$60,000
50 th percentile (median)	\$79,000		\$79,000	\$79,000	\$71,000	\$85,000
75 th percentile	\$110,000		\$93,600	\$105,000	\$90,500	\$128,750

Table 9a: Median Calendar Year Salaries by Region of the Country

Q. 9 If you are paid on an annual salary basis, indicate the gross annual salary associated with your principal professional employment as of that date. (Include your annual salary before all deductions but do not include monies earned for work that is not a usual part of your principal professional employment. Bonuses and commissions should be included.) (Gross annual salary, Sept. 2006.)

Analyses limited to respondents who met the following criteria:

- ❖ CCC-A
- ❖ Employed full-time
- ❖ Employed for a calendar year
- ❖ Annual salary of at least \$1

Years Experience	Total		Schools (n = 50)	Colleges/ Universities (n = 89)	Hospitals (n = 295)	Private Physicians' Offices (n = 293)	Other Non- residential Health Care Facilities (n = 356)	
	n	Salary						
Northeast	248	\$70,000	n < 25	n < 25	\$72,000	\$60,666	\$73,000	
Middle Atlantic	170	\$69,000			\$70,600	\$61,000	\$76,500	
New England	78	\$70,000			n < 25	n < 25	\$70,000	
Midwest	288	\$60,000			\$61,500	\$60,000	\$59,000	\$62,000
E. N. Central	196	\$62,000			n < 25	\$62,400	\$60,000	\$62,000
W. N. Central	92	\$57,632			\$51,500	n < 25	n < 25	
South	425	\$63,000	\$60,000	\$70,750	\$60,000	\$60,000	\$70,000	
E. S. Central	82	\$60,000	n < 25	n < 25	n < 25	n < 25	n < 25	
S. Atlantic	224	\$65,000			\$60,000	\$60,000	\$65,000	
W. S. Central	120	\$63,312			n < 25	\$60,000	\$86,000	
West	196	\$68,000			\$72,000	\$64,000	\$67,000	
Mountain	73	\$63,000			n < 25	n < 25	\$62,500	
Pacific	123	\$72,000			\$72,000	n < 25	\$75,000	

Table 9b: Median Academic Year Salaries by Region of the Country

Q. 9 If you are paid on an annual salary basis, indicate the gross annual salary associated with your principal professional employment as of that date. (Include your annual salary before all deductions but do not include monies earned for work that is not a usual part of your principal professional employment. Bonuses and commissions should be included.) (Gross annual salary, Sept. 2006.)

Analyses limited to respondents who met the following criteria:

- ❖ CCC-A
- ❖ Employed full-time
- ❖ Employed for an academic year
- ❖ Annual salary of at least \$1

Years Experience	Total		Schools	Colleges/ Universities	Hospitals	Private Physicians' Offices	Other Non- residential Health Care Facilities
	<i>n</i>	Salary	(<i>n</i> = 142)	(<i>n</i> = 84)	(<i>n</i> = 1)	(<i>n</i> = 3)	(<i>n</i> = 5)
Northeast	46	\$59,795	<i>n</i> < 25	<i>n</i> < 25	<i>n</i> < 25	<i>n</i> < 25	<i>n</i> < 25
Middle Atlantic	36	\$58,536					
New England	10	<i>n</i> < 25					
Midwest	74	\$56,620	\$56,000	\$59,500			
E. N. Central	44	\$60,298	\$60,300	<i>n</i> < 25			
W. N. Central	30	\$52,782	<i>n</i> < 25				
South	65	\$56,000	\$56,000				
E. S. Central	8	<i>n</i> < 25	<i>n</i> < 25				
S. Atlantic	36	\$56,000	\$56,000				
W. S. Central	21	<i>n</i> < 25	<i>n</i> < 25				
West	34	\$55,072					
Mountain	15	<i>n</i> < 25					
Pacific	18	<i>n</i> < 25					

Table 10: Calendar Year Salaries by Population Setting

Q. 9 If you are paid on an annual salary basis, indicate the gross annual salary associated with your principal professional employment as of that date. (Include your annual salary before all deductions but do not include monies earned for work that is not a usual part of your principal professional employment. Bonuses and commissions should be included.) (Gross annual salary, Sept. 2006.)

Analyses limited to respondents who met the following criteria:

- ❖ CCC-A
- ❖ Employed full-time
- ❖ Employed for a calendar year
- ❖ Annual salary of at least \$1

	Total	Schools	Colleges/ Universities	Hospitals	Private Physicians' Offices	Other Non- residential Health Care Facilities
Metropolitan/Urban						
	(n = 605)	(n = 23)	(n = 56)	(n = 207)	(n = 129)	(n = 147)
25 th percentile	\$55,000	n < 25	\$56,250	\$55,000	\$50,000	\$58,000
50 th percentile (median)	\$65,000		\$70,000	\$64,480	\$60,000	\$75,000
75 th percentile	\$82,000		\$84,000	\$79,000	\$72,000	\$106,750
Suburban						
	(n = 378)	(n = 18)	(n = 15)	(n = 61)	(n = 131)	(n = 130)
25 th percentile	\$52,978	n < 25	n < 25	\$55,500	\$52,000	\$52,000
50 th percentile (median)	\$63,210			\$70,000	\$60,000	\$62,721
75 th percentile	\$80,000			\$82,000	\$72,000	\$90,000

Table 10 Continued: Calendar Year Salaries by Population Setting

Q. 9 If you are paid on an annual salary basis, indicate the gross annual salary associated with your principal professional employment as of that date. (Include your annual salary before all deductions but do not include monies earned for work that is not a usual part of your principal professional employment. Bonuses and commissions should be included.) (Gross annual salary, Sept. 2006.)

Analyses limited to respondents who met the following criteria:

- ❖ CCC-A
- ❖ Employed full-time
- ❖ Employed for a calendar year
- ❖ Annual salary of at least \$1

	Total	Schools	Colleges/ Universities	Hospitals	Private Physicians' Offices	Other Non- residential Health Care Facilities
Rural						
	(n = 162)	(n = 9)	(n = 16)	(n = 25)	(n = 31)	(n = 76)
25 th percentile	\$50,000	n < 25	n < 25	\$55,694	\$50,000	\$48,000
50 th percentile (median)	\$60,271			\$60,000	\$54,000	\$65,500
75 th percentile	\$80,000			\$65,000	\$70,000	\$94,250

Table 11: Calendar Year Salaries in Private Practice

Q. 9 If you are paid on an annual salary basis, indicate the gross annual salary associated with your principal professional employment as of that date. (Include your annual salary before all deductions but do not include monies earned for work that is not a usual part of your principal professional employment. Bonuses and commissions should be included.) (Gross annual salary, Sept. 2006.)

Analyses limited to respondents who met the following criteria:

- ❖ CCC-A
- ❖ Employed full-time
- ❖ Employed for a calendar year
- ❖ Annual salary of at least \$1

	Total	Schools	Colleges/ Universities	Hospitals	Private Physicians' Offices	Other Non- residential Health Care Facilities
Private Practice: Owner						
	(n = 211)	(n = 5)	(n = 2)	(n = 5)	(n = 13)	(n = 175)
25 th percentile	\$60,000	n < 25	n < 25	n < 25	n < 25	\$60,000
50 th percentile (median)	\$85,000					\$85,000
75 th percentile	\$121,974					\$120,000
Private Practice: Full-time Salaried Employee						
	(n = 298)	(n = 1)	(n = 0)	(n = 16)	(n = 170)	(n = 105)
25 th percentile	\$50,000	n < 25	n < 25	n < 25	\$50,000	\$50,000
50 th percentile (median)	\$60,000				\$60,000	\$60,000
75 th percentile	\$75,000				\$72,000	\$75,000

