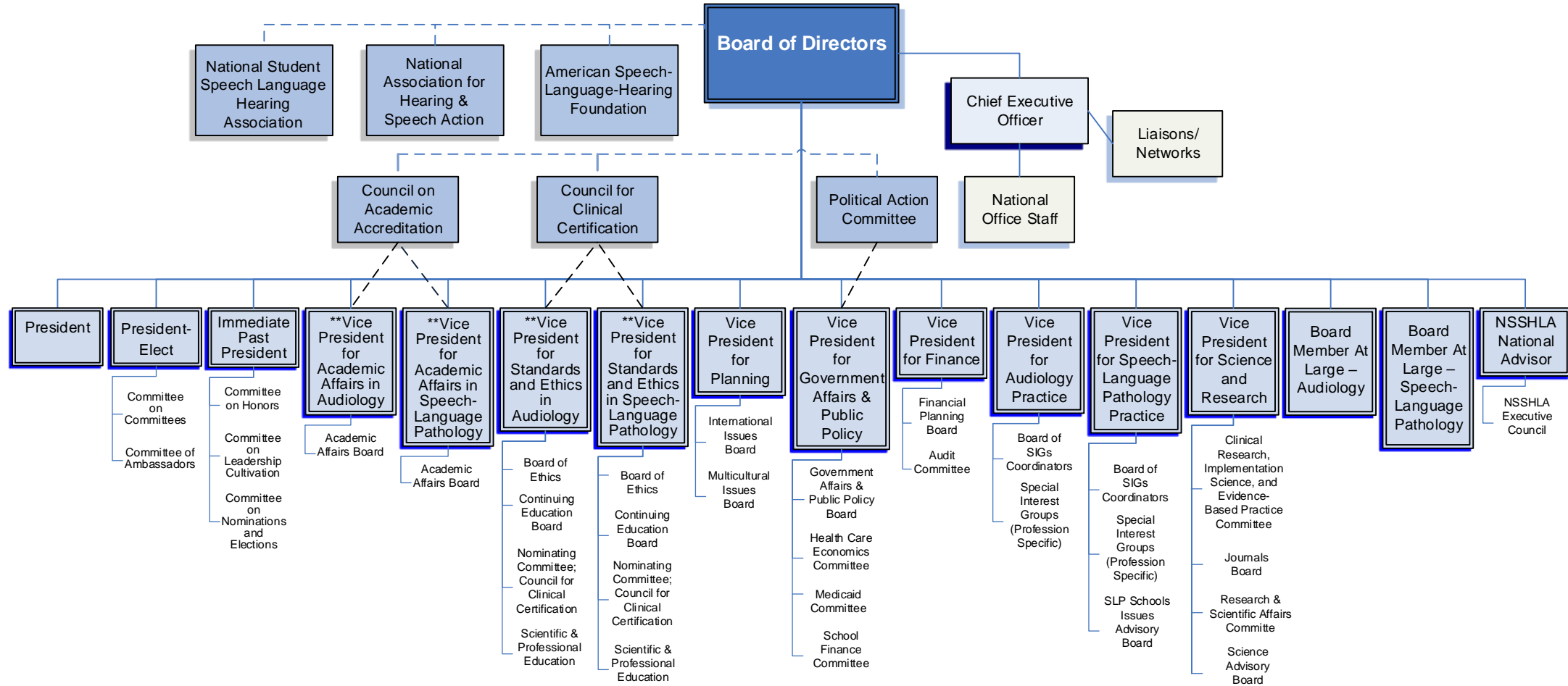


ASHA Governance Structure



****The Committee of Chairs of Standards and Ethics** comprises the Vice Presidents for Academic Affairs in Audiology and Speech-Language Pathology; the Vice Presidents for Standards and Ethics in Audiology and Speech-Language Pathology; the chairs and ex officios of the Board of Ethics, Council on Academic Accreditation, and Council for Clinical Certification in Audiology and Speech-Language Pathology; and is coordinated by the Chief Staff Officer for Audiology.