



AUDIOLOGY SURVEY 2008



Survey Summary Report: Number and Type of Responses

Suggested citation:
American Speech-Language-Hearing Association. (2008).
*2008 Audiology Survey summary report:
Number and type of responses*
Rockville, MD: Author.

Stratified random sampling without replacement was used to select a sample of 4,000 ASHA-certified audiologists for the 2008 Audiology Survey. The sample was stratified by type of employment facility and by private practice. Data have been weighted to reflect their proportion within the Association. A **55.0% response rate** was obtained ($N = 2,181$ completed surveys from a net sample of 3,965 eligibles). Data are not reported for cells with fewer than 25 respondents.

The total column reflects the sum of the five listed facility types plus a group who fell into an “other” category as well as respondents who did not identify a facility. The n 's and responses shown in the tables' columns (both for total and for each facility) are the estimated values for the population of 6,652 from which the sample was drawn. Tests of significance, however, are based on the data from the actual respondents ($N \leq 2,181$).

Description of statistical terms used in the report can be found in the Appendix.

ASHA Services and Programs

1. In your opinion, what kind of job is the Association doing in serving its audiology members? (Percentages) Analyses limited to respondents who met the following criterion: ❖ CCC-A						
Response	Total	School	College/ university	Hospital	Nonres. Health Care	Industry
	($N = 6,468$)	($N = 683$)	($N = 632$)	($N = 1,428$)	($N = 3,285$)	($N = 69$)
Poor	7.2	4.7	5.2	6.7	8.8	8.7
Fair	47.1	44.9	38.3	49.4	49.1	47.8
Good	42.5	46.4	51.4	40.8	39.8	39.1
Excellent	3.2	4.0	5.1	3.2	2.2	4.3
Statistical significance	$\chi^2(12) = 25.1, p = .015, \text{Cramer's } V = .065$					



2. How valuable are each of the resources below in providing information relevant to your professional practice?
(Percentages)

Scale: 1 = "Not at all valuable" to
5 = "Very valuable"
9 = "Not familiar"

Analyses limited to respondents who met the following criterion:

❖ CCC-A

Response	Total	School	College/ university	Hospital	Nonres. Health Care	Industry
	(N ≥ 6,441)	(N ≥ 661)	(N ≥ 633)	(N ≥ 1,435)	(N = 3,259)	(N ≥ 68)
ASHA's Audiology Web pages						
1 Not at all valuable	4.1	1.0	2.7	3.0	5.8	0.0
2	7.6	7.2	6.1	8.4	7.6	16.9
3	26.4	27.4	27.3	29.2	25.0	16.9
4	22.6	18.8	34.6	22.2	21.6	8.5
5 Very valuable	13.3	12.8	17.8	15.5	11.2	4.2
9 Not familiar	26.0	32.8	11.5	21.7	28.7	53.5
Statistical significance	$\chi^2(20) = 84.8, p = .000, \text{Cramer's } V = .103$					
ASHA's Access Audiology (electronic newsletter)						
1 Not at all valuable	5.6	1.0	5.6	5.5	6.8	0.0
2	9.3	8.3	8.0	8.6	10.3	4.2
3	27.2	27.8	31.0	30.1	25.3	25.4
4	19.4	19.4	29.1	19.8	18.1	8.5
5 Very valuable	7.5	6.4	8.9	8.4	6.8	8.5
9 Not familiar	31.1	37.1	17.4	27.6	32.8	53.5
Statistical significance	$\chi^2(20) 57.3, p = .000, \text{Cramer's } V = .085$					
Table 2 continues on next page.						

2. (Con'td.) How valuable are each of the resources below in providing information relevant to your professional practice?
(Percentages)

Scale: 1 = "Not at all valuable" to

5 = "Very valuable"

9 = "Not familiar"

Analyses limited to respondents who met the following criterion:

❖ CCC-A

Response	Total	School	College/ university	Hospital	Nonres. Health Care	Industry
	(N ≥ 6,441)	(N ≥ 661)	(N ≥ 633)	(N ≥ 1,435)	(N = 3,259)	(N ≥ 68)
ASHA's Audiology Connections (annual newsletter)						
1 Not at all valuable	6.5	3.0	6.9	5.9	7.6	4.4
2	11.8	8.7	14.2	11.1	12.1	4.4
3	28.4	30.1	34.0	29.7	27.1	17.6
4	19.2	18.7	21.9	19.2	19.6	8.8
5 Very valuable	9.1	10.0	6.4	8.6	9.4	8.8
9 Not familiar	25.1	29.5	16.6	25.6	24.3	55.9
Statistical significance		$\chi^2(20) = 37.8, p = .009$, Cramer's V = .069				
<u>Audiology@asha.org (e-mail mailbox)</u>						
1 Not at all valuable	8.3	4.1	8.5	8.2	9.5	4.4
2	8.4	7.7	7.6	9.2	8.5	0.0
3	16.0	17.5	16.3	18.0	14.5	22.1
4	9.6	8.0	10.3	11.7	9.4	0.0
5 Very valuable	5.1	4.5	4.3	6.3	4.8	4.4
9 Not familiar	52.5	58.1	53.1	46.6	53.3	69.1
Statistical significance		$\chi^2(20) = 26.1, p = .164$				
Table 2 continues on next page.						

2. (Cont'd.) How valuable are each of the resources below in providing information relevant to your professional practice?
 (Percentages)
 Scale: 1 = "Not at all valuable" to
 5 = "Very valuable"
 9 = "Not familiar"
 Analyses limited to respondents who met the following criterion:
 ❖ CCC-A

Response	Total	School	College/ university	Hospital	Nonres. Health Care	Industry
	(N ≥ 6,441)	(N ≥ 661)	(N ≥ 633)	(N ≥ 1,435)	(N = 3,259)	(N ≥ 68)
ASHA Special Interest Divisions 6 through 9						
1 Not at all valuable	8.4	4.9	12.0	8.4	8.8	4.4
2	9.2	7.6	11.2	10.4	8.7	8.8
3	17.3	22.1	19.6	17.6	16.3	17.6
4	10.3	10.1	14.4	11.3	8.9	4.4
5 Very valuable	6.0	6.3	7.9	6.7	5.1	4.4
9 Not familiar	48.8	49.0	34.9	45.6	52.3	60.3
Statistical significance	$\chi^2(20) = 36.8, p = .012, \text{Cramer's } V = .068$					



Workforce

3. Based on your own observations and experiences, rate the current job market for audiologists in your type of employment facility and in your geographic area. (Percentages)

Analyses limited to respondents who met the following criterion:

❖ CCC-A

Job Market	Total	School	College/ university	Hospital	Nonres. Health Care	Industry
	(N = 6,508)	(N = 676)	(N = 635)	(N = 1,439)	(N = 3,347)	(N = 69)
Job openings more numerous than job seekers	30.0	17.9	31.2	29.0	33.1	39.1
Job openings in balance with job seekers	36.1	33.0	47.7	36.1	35.1	43.5
Job openings fewer than job seekers	33.9	49.1	21.1	35.0	31.8	17.4
Statistical significance	$\chi^2(8) = 58.0, p = .000, \text{Cramer's } V = .120$					



Employment and Earnings

4. Which one of the following categories best describes your employment status? (Percentages)						
Analyses limited to respondents who met the following criterion:						
❖ CCC-A						
Status	Total	School	College/ university	Hospital	Nonres. Health Care	Industry
	(N = 6,637)	(N = 690)	(N = 651)	(N = 1,458)	(N = 3,383)	(N = 68)
Employed full-time	75.9	80.0	92.0	78.6	76.1	91.2
Employed part-time	20.4	19.6	7.5	21.0	23.8	8.8
On leave of absence	0.6	0.0	0.5	0.2	0.1	0.0
Not employed but actively seeking employment	0.3	0.0	0.0	0.2	0.0	0.0
Not employed and not seeking employment	1.4	0.4	0.0	0.0	0.0	0.0
Retired	1.3	0.0	0.0	0.0	0.0	0.0
Statistical significance	Too many cells (64%) have expected count less than 5.					
Recoded: Employed Full-Time or Part-Time						
	(N = 6,394)	(N = 687)	(N = 648)	(N = 1,452)	(N = 3,380)	(N = 68)
Employed full-time	78.8	80.3	92.4	78.9	76.2	91.2
Employed part-time	21.2	19.7	7.6	21.1	23.8	8.8
Statistical significance	$\chi^2(4) = 32.8, p = .000, \text{Cramer's } V = .127$					

5. Primary Employment Function. Circle the number of the one position that best describes how you spend most of your time. (Percentages)

Analyses limited to respondents who met the following criteria:

- ❖ CCC-A
- ❖ Employed full-time or part-time

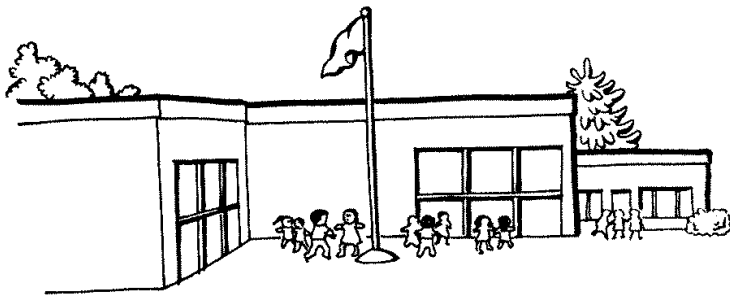
Function	Total	School	College/ university	Hospital	Nonres. Health Care	Industry
	(N = 6,357)	(N = 687)	(N = 645)	(N = 1,451)	(N = 3,367)	(N = 66)
Clinical service provider (includes all direct services to clients, including those in classrooms)	84.6	94.0	18.8	87.0	96.2	27.3
College/university professor	6.8	0.0	66.7	0.0	0.0	0.0
Researcher	0.9	0.0	4.3	1.4	0.0	9.1
Consultant	1.0	1.2	0.0	0.0	0.7	18.2
Administrator/supervisor/director	5.7	2.6	9.3	11.4	3.0	9.1
Other	1.0	2.2	0.9	0.2	0.1	36.4
Statistical significance	Too many cells (47%) have expected count less than 5.					
	(N = 6,357)	(N = 687)	(N = 645)	(N = 1,451)	(N = 3,367)	(N = 65)
Clinical service provider (includes all direct services to clients, including those in classrooms)	84.6	94.0	18.8	87.0	96.2	27.7
College/university professor	6.8	0.0	66.7	0.0	0.0	0.0
Administrator/supervisor/director	5.7	2.6	9.3	11.4	3.0	9.2
Other	2.9	3.3	5.3	1.6	0.8	63.1
Statistical significance	$\chi^2(12) = 1762.2, p = .000, \text{Cramer's } V = .537$					

6. Primary Employment *Facility*. Circle the number of the one type of facility that best describes the one in which you work most of the time. *For individuals engaged in private practice, select the type of facility in which you deliver most of your services.* (Percentages)

Analyses limited to respondents who met the following criteria:

- ❖ CCC-A
- ❖ Employed full-time or part-time

Facility	(N = 6,340)
School	10.8
College/ university	10.2
Hospital	22.9
Nonresidential health care facility (includes audiologist's and physician's offices)	53.3
Industry	1.1
Other	1.7



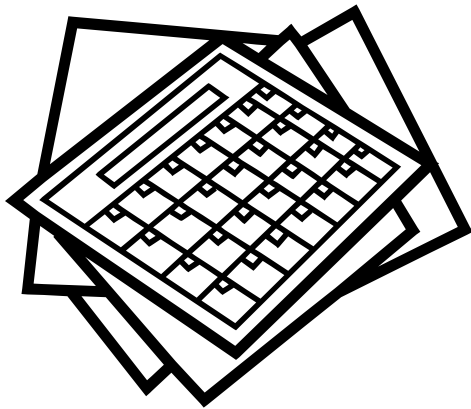
7. Do you work at a pediatric evaluation center that specializes in: (Percentages)						
Analyses limited to respondents who met the following criteria:						
❖ CCC-A						
❖ Employed full-time or part-time						
Response	Total	School	College/ university	Hospital	Nonres. Health Care	Industry
	(N ≥ 6,038)	(N ≥ 623)	(N ≥ 627)	(N ≥ 1,358)	(N = 3,218)	(N ≥ 68)
Cochlear implant (CI) programming						
Yes	13.6	5.6	19.3	33.3	6.3	0.0
No	86.4	94.4	80.7	66.7	93.7	100.0
Statistical significance	$\chi^2(4) = 205.8, p = .000, \text{Cramer's } V = .326$					
Cochlear treatment and rehabilitation						
Yes	14.8	19.5	24.4	30.9	6.0	0.0
No	85.2	80.5	75.6	69.1	94.0	100.0
Statistical significance	$\chi^2(4) = 164.3, p = .000, \text{Cramer's } V = .292$					
Infant and young child audiologic evaluations						
Yes	50.5	53.2	46.5	66.8	45.4	0.0
No	49.5	46.8	53.5	33.2	54.6	100.0
Statistical significance	$\chi^2(4) = 80.9, p = .000, \text{Cramer's } V = .201$					
Infant and young child amplification						
Yes	36.8	35.1	35.2	51.4	32.4	0.0
No	63.2	64.9	64.8	48.6	67.6	100.0
Statistical significance	$\chi^2(4) = 60.3, p = .000, \text{Cramer's } V = .175$					

8. In your primary job, are you paid on an annual or an hourly basis? (Percentages)

Analyses limited to respondents who met the following criteria:

- ❖ CCC-A
- ❖ Employed full-time or part-time

Response	Total	School	College/ university	Hospital	Nonres. Health Care	Industry
	(N = 6,225)	(N = 687)	(N = 642)	(N = 1,424)	(N = 3,267)	(N = 68)
Annual salary	75.0	88.8	97.5	70.2	69.7	69.1
Hourly rate (SKIP to Q. 11.)	25.0	11.2	2.5	29.8	30.3	30.9
Statistical significance	$\chi^2(4) = 110.2, p = .000, \text{Cramer's } V = .235$					



9. If you are paid on an annual salary basis, indicate the gross annual salary associated with your primary professional employment. *Include your annual salary before all deductions but do not include monies earned for work that is not a usual part of your principal professional employment. Bonuses, commissions, and supplements should be included.*

Analyses limited to respondents who met the following criteria:

- ❖ CCC-A
- ❖ Employed full-time
- ❖ Annual salary of at least \$1

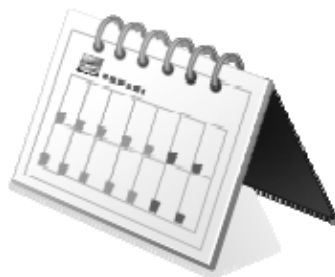
Response	Total	School	College/ university	Hospital	Nonres. Health Care	Industry
Work 9–10 months (academic year)						
	(N = 637)	(N = 409)	(N = 206)	(N = 0)	(N = 22)	(N = 0)
Mean	\$67,336	\$62,444	\$76,541	(N < 25)	(N < 25)	(N < 25)
Standard deviation	\$17,050	\$13,474	\$19,311			
25th percentile	\$56,000	\$53,000	\$62,000			
50th percentile (median)	\$65,000	\$60,000	\$72,500			
75th percentile	\$78,000	\$70,771	\$85,000			
Mode	\$70,000	\$70,000	\$60,000			
Statistical significance	$F(2, 235) = 20.1, p = .000$					
Work 11– 12 months (calendar year)						
	(N = 3,341)	(N = 85)	(N = 362)	(N = 851)	(N = 1,933)	(N = 38)
Mean	\$81,774	\$70,223	\$76,660	\$80,118	\$83,707	\$82,692
Standard deviation	\$37,135	\$15,225	\$23,087	\$23,080	\$43,564	\$14,793
25th percentile	\$60,000	\$55,000	\$60,000	\$65,000	\$60,000	\$77,895
50th percentile (median)	\$73,000	\$69,587	\$71,574	\$75,000	\$72,000	\$79,000
75th percentile	\$90,000	\$81,000	\$84,079	\$89,000	\$93,000	\$89,021
Mode	\$60,000	\$52,000	\$80,000	\$80,000	\$60,000	\$78,000
Statistical significance	$F(4, 1042) = 1.7, p = .147$					

10. For what period of work is this salary? *If you work for 9–10 months, as in an academic setting, but are paid over a 12 month period, select response “1.”*

Analyses limited to respondents who met the following criteria:

- ❖ CCC-A
- ❖ Employed full-time or part-time
- ❖ Response to Q. 9 is at least \$1

Response	Total	School	College/ university	Hospital	Nonres. Health Care	Industry
Academic Year, Calendar Year, or Other						
	(N = 4,419)	(N = 569)	(N = 605)	(N = 954)	(N = 2,153)	(N = 41)
Work 9 or 10 months per year	16.2	83.8	35.5	0.0	1.0	0.0
Work 11 or 12 months per year	83.1	16.2	64.5	98.6	98.4	100.0
Work other period	0.7	0.0	0.0	1.4	0.6	0.0
Statistical significance	Too many cells (40%) have expected count less than 5.					
Recoded: Academic Year or Calendar Year						
	(N = 4,389)	(N = 569)	(N = 605)	(N = 941)	(N = 2,140)	(N = 41)
Work 9 or 10 months per year	16.3	83.8	35.5	0.0	1.0	0.0
Work 11 or 12 months per year	83.7	16.2	64.5	100.0	99.0	100.0
Statistical significance	$\chi^2(4) = 866.5, p = .000, \text{Cramer's } V = .783$					



11. If you are paid on an hourly basis, indicate the hourly rate you earn for all logged time associated with your primary professional employment. *Include your hourly salary before all deductions but do not include monies earned for work that is not a usual part of your principal professional employment. Bonuses, commissions, and supplements should be included.*

Analyses limited to respondents who met the following criteria:

- ❖ CCC-A
- ❖ Employed full-time or part-time
- ❖ Hourly salary of at least \$1

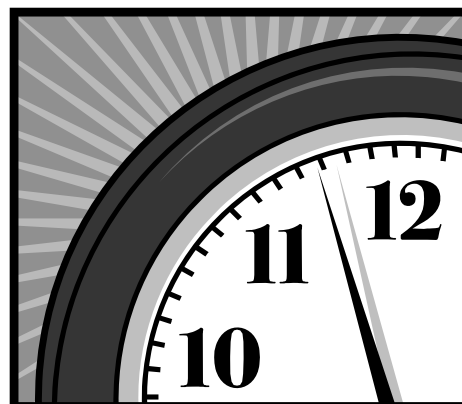
Response	Total	School	College/ university	Hospital	Nonres. Health Care	Industry
Work 27 or fewer hours						
	(N = 680)	(N = 37)	(N = 9)	(N = 149)	(N = 467)	(N = 0)
Mean	\$37.66	\$44.75	(N < 25)	\$37.28	\$36.11	(N < 25)
Standard deviation	\$16.42	\$14.81		\$11.54	\$13.82	
25th percentile	\$28.17	\$30.00		\$30.00	\$28.00	
50th percentile (median)	\$34.36	\$40.18		\$36.00	\$33.00	
75th percentile	\$40.00	\$56.55		\$40.00	\$40.00	
Mode	\$30.00	\$25.11		\$30.00	\$30.00	
Statistical significance	$F(3, 212) = 8.3, p = .000$					
Work 28 or more hours						
	(N = 736)	(N = 32)	(N = 0)	(N = 247)	(N = 436)	(N = 12)
Mean	\$35.35	\$48.72	(N < 25)	\$35.84	\$33.84	(N < 25)
Standard deviation	\$13.95	\$28.17		\$ 8.40	\$14.43	
25th percentile	\$27.43	\$30.05		\$31.50	\$25.00	
50th percentile (median)	\$32.24	\$39.90		\$34.00	\$30.00	
75th percentile	\$39.00	\$55.00		\$39.00	\$38.00	
Mode	\$30.00	\$23.50		\$32.00	\$30.00	
Statistical significance	$F(3, 230) = 5.4, p = .001$					

12. For how many hours were you paid at the hourly rate you entered in Q. 11?

Analyses limited to respondents who met the following criteria:

- ❖ CCC-A
- ❖ Employed full-time or part-time
- ❖ Hourly salary of at least \$1
- ❖ Worked at least 1 hour per week

Hours	Total	School	College/ university	Hospital	Nonres. Health Care	Industry
	(N = 1,420)	(N = 69)	(N = 9)	(N = 399)	(N = 903)	(N = 12)
Mean	27.5	24.2	(N < 25)	30.0	27.0	(N < 25)
Standard deviation	10.8	10.0		10.6	10.4	
25th percentile	20.0	18.9		24.0	20.0	
50th percentile (median)	28.0	25.0		32.0	26.0	
75th percentile	38.0	31.9		40.0	36.0	
Mode	40.0	20.0		40.0	40.0	
Statistical significance	$F(4, 446) = 5.3, p = .000$					



Patient Education Materials

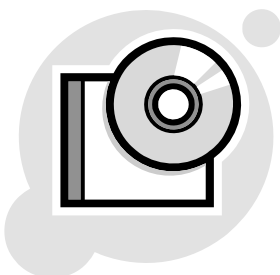
13. Where do you obtain your patient education materials? <i>Circle all that apply.</i> Analyses limited to respondents who met the following criteria:						
❖ CCC-A						
❖ Employed full-time or part-time						
Response	Total	School	College/ university	Hospital	Nonres. Health Care	Industry
	(N = 6,394)	(N = 686)	(N ≥ 647)	(N = 1,451)	(N = 3,381)	(N = 68)
AAA product sales	28.3	18.7	28.1	28.9	30.3	35.3
Statistical significance		$\chi^2(4) = 14.6, p = .006$, Cramer's V = .085				
AAA public Web site	32.9	31.0	43.4	35.1	30.7	26.5
Statistical significance		$\chi^2(4) = 15.3, p = .004$, Cramer's V = .087				
ASHA product sales	22.2	27.1	25.9	26.4	19.3	4.4
Statistical significance		$\chi^2(4) = 19.4, p = .001$, Cramer's V = .098				
ASHA public Web site	26.8	39.6	43.0	27.8	21.1	13.2
Statistical significance		$\chi^2(4) = 68.6, p = .000$, Cramer's V = .183				
Manufacturers	76.8	64.0	61.1	72.6	84.9	64.7
Statistical significance		$\chi^2(4) = 98.7, p = .000$, Cramer's V = .220				
National Hearing Conservation Association product sales	6.8	6.6	6.0	5.2	7.2	8.8
Statistical significance		$\chi^2(4) = 2.4, p = .654$				
National Institute on Deafness and Other Communication Disorders (NIDCD) Web site	26.3	35.6	43.7	32.7	19.0	17.6
Statistical significance		$\chi^2(4) = 83.9, p = .000$, Cramer's V = .203				

14. What is the source of the patient education materials you use? *Circle all that apply.*

Analyses limited to respondents who met the following criteria:

- ❖ CCC-A
- ❖ Employed full-time or part-time

Response	Total	School	College/ university	Hospital	Nonres. Health Care	Industry
	(N = 6,394)	(N ≥ 686)	(N = 647)	(N = 1,451)	(N = 3,381)	(N = 68)
Downloaded from a Web site	54.9	76.6	58.6	60.2	48.0	48.5
Statistical significance		$\chi^2(4) = 80.1, p = .000, \text{Cramer's } V = .198$				
Purchased brochures	60.1	41.0	45.3	55.7	69.8	51.5
Statistical significance		$\chi^2(4) = 105.0, p = .000, \text{Cramer's } V = .227$				
Purchased videos or DVDs	15.5	23.0	20.2	16.7	12.5	26.5
Statistical significance		$\chi^2(4) = 25.3, p = .000, \text{Cramer's } V = .111$				
Self-created materials	67.8	72.0	64.7	75.1	65.3	55.9
Statistical significance		$\chi^2(4) = 17.7, p = .001, \text{Cramer's } V = .093$				



Private Practice

15. Which one of the following best describes your involvement in a private practice? (Percentages) Analyses limited to respondents who met the following criteria:						
❖ CCC-A						
❖ Employed full-time or part-time						
Private Practice Involvement	Total	School	College/ university	Hospital	Nonres. Health Care	Industry
	(N = 5,684)	(N = 606)	(N = 557)	(N = 1,214)	(N = 3,114)	(N = 62)
Full-time salaried employee	15.8	1.2	0.5	2.1	27.4	9.7
Part-time salaried employee	6.1	0.3	0.5	1.4	10.1	0.0
Contractor/consultant (e.g., per diem, temporary)	3.3	3.8	4.7	3.0	2.9	0.0
Owner (e.g., office-based or contract-based private practice)	16.7	6.8	4.7	3.2	26.0	9.7
I do not work in private practice (SKIP to Q. 18.)	58.2	88.0	89.6	90.4	33.6	80.6
Statistical significance	$\chi^2(16) = 521.7, p = .000, \text{Cramer's } V = .268$					



16. Which of the following best describes your private practice employment? *Circle all that apply.*

Analyses limited to respondents who met the following criteria:

- ❖ CCC-A
- ❖ Employed full-time or part-time
- ❖ Selected full-time, part-time, contractor, or owner for Q. 15.

Practice Type	Total	School	College/ university	Hospital	Nonres. Health Care	Industry
	(N = 2,374)	(N = 73)	(N = 57)	(N ≥ 117)	(N = 2,066)	(N = 12)
Self-employed in a private practice	43.4	63.0	54.4	40.7	42.3	(N < 25)
Statistical significance	Too many cells (20%) have expected count less than 5.					
Employed in a private practice owned by other audiologists	15.2	0.0	14.0	14.4	15.7	(N < 25)
Statistical significance	Too many cells (40%) have expected count less than 5.					
Employed in a private practice owned by non-audiologists	40.3	21.9	27.6	33.3	42.3	(N < 25)
Statistical significance	Too many cells (20%) have expected count less than 5.					

17. How does your private practice charge? (Percentages)

Analyses limited to respondents who met the following criteria:

- ❖ CCC-A
- ❖ Employed full-time or part-time
- ❖ Selected full-time, part-time, contractor, or owner for Q. 15.

Charges	Total	School	College/ university	Hospital	Nonres. Health Care	Industry
	(N = 2,216)	(N = 59)	(N = 57)	(N = 98)	(N = 1,945)	(N = 12)
Bundles all charges	48.8	45.8	45.6	34.7	50.1	(N < 25)
Charges separately for professional services and devices	51.2	54.2	54.4	65.3	49.9	
Statistical significance	Too many cells (20%) have expected count less than 5.					

Service Provision

18. Which of the following services do you provide? <i>Circle all that apply.</i> (Percentages) Analyses limited to respondents who met the following criteria:						
❖ CCC-A						
❖ Clinical service provider						
❖ Employed full-time or part-time						
Service	Total	School	College/ university	Hospital	Nonres. Health Care	Industry
	(N = 5,379)	(N ≥ 645)	(N ≥ 121)	(N ≥ 1,263)	(N ≥ 3,239)	(N = 18)
Auditory training	22.7	48.3	19.8	17.7	19.6	(N < 25)
Statistical significance		Too many cells (20%) have expected count less than 5.				
Cerumen management	40.6	12.4	29.8	33.1	49.6	(N < 25)
Statistical significance		Too many cells (20%) have expected count less than 5.				
Counseling on communication strategies/realistic expectations	91.4	84.4	92.6	91.2	93.2	(N < 25)
Statistical significance		Too many cells (20%) have expected count less than 5.				
Demonstration/fitting/orientation of hearing assistive technology	83.9	87.5	82.6	78.0	85.8	(N < 25)
Statistical significance		$\chi^2(4) = 16.8, p = .002, \text{Cramer's } V = .099$				
Fitting and dispensing hearing aids	80.3	28.9	85.1	78.0	91.6	(N < 25)
Statistical significance		Too many cells (20%) have expected count less than 5.				
Hearing conservation/prevention	57.5	55.9	54.9	51.5	60.6	(N < 25)
Statistical significance		Too many cells (20%) have expected count less than 5.				
Mapping of CI	10.4	3.6	32.2	21.7	6.9	(N < 25)
Statistical significance		Too many cells (20%) have expected count less than 5.				
Speechreading	5.6	13.8	20.5	3.2	4.2	(N < 25)
Statistical significance		Too many cells (20%) have expected count less than 5.				

Table 18 continues on next page.

18. (Cont'd.) Which of the following services do you provide? *Circle all that apply.* (Percentages)
 Analyses limited to respondents who met the following criteria:

- ❖ CCC-A
- ❖ Clinical service provider
- ❖ Employed full-time or part-time

Service	Total	School	College/ university	Hospital	Nonres. Health Care	Industry
	(N = 5,379)	(N ≥ 645)	(N ≥ 121)	(N ≥ 1,263)	(N ≥ 3,239)	(N = 18)
Telepractice	1.8	1.2	5.0	2.6	1.5	(N < 25)
Statistical significance		Too many cells (30%) have expected count less than 5.				
Validation of treatment outcomes by self questionnaires	37.7	22.6	57.9	42.8	38.1	(N < 25)
Statistical significance		Too many cells (20%) have expected count less than 5.				
Verification of performance of hearing aids using real ear measures	55.3	47.1	75.2	63.3	53.4	(N < 25)
Statistical significance		Too many cells (20%) have expected count less than 5.				
Verification of performance of CI	12.1	22.9	27.3	20.4	6.5	(N < 25)
Statistical significance		$\chi^2(4) = 91.1, p = .000, \text{Cramer's } V = .230$				
Vestibular assessment	36.8	1.2	19.7	42.5	43.2	(N < 25)
Statistical significance		Too many cells (20%) have expected count less than 5.				
Vestibular rehabilitation	11.2	0.5	9.8	10.8	13.8	(N < 25)
Statistical significance		Too many cells (20%) have expected count less than 5.				
I do not provide any of the above services.	1.8	1.9	0.0	4.0	1.0	(N < 25)
Statistical significance		Too many cells (30%) have expected count less than 5.				

19. How qualified do you believe you are to provide services to multicultural populations? (Percentages)
 Scale: 1 = "Not at all qualified" to
 5 = "Very qualified"
 Analyses limited to respondents who met the following criterion:
 ❖ CCC-A

Response	Total	School	College/ university	Hospital	Nonres. Health Care	Industry
	(N = 6,447)	(N = 682)	(N = 635)	(N = 1,442)	(N = 3,264)	(N = 69)
1 Not at all qualified	5.9	2.9	3.6	3.4	7.9	21.7
2	14.3	11.1	9.9	9.0	18.0	8.7
3	36.5	44.0	39.5	27.5	38.2	17.4
4	28.5	30.9	28.7	36.4	24.7	39.1
5 Very qualified	14.8	11.0	18.3	23.7	11.2	13.0
Statistical significance	$\chi^2(16) = 121.3, p = .000, \text{Cramer's } V = .123$					

Social Networks

20. On how many online social networking sites (e.g., Facebook, MySpace, LinkedIn) do you have an account or profile?
 Analyses limited to respondents who met the following criterion:
 ❖ CCC-A

Social Networks	Total	School	College/ university	Hospital	Nonres. Health Care	Industry
	(N = 6,483)	(N = 676)	(N = 641)	(N = 1,432)	(N = 3,292)	(N = 65)
Mean	0.3	0.2	0.3	0.4	0.4	0.7
Standard deviation	0.7	0.5	0.7	0.7	0.7	1.0
25th percentile	0.0	0.0	0.0	0.0	0.0	0.0
50th percentile (median)	0.0	0.0	0.0	0.0	0.0	0.0
75th percentile	0.0	0.0	0.0	1.0	0.0	1.0
Mode	0.0	0.0	0.0	0.0	0.0	0.0
Statistical significance	$F(4, 1994) = 3.6, p = .006$					

Continuing Education (CE)

21. How have you obtained your CE credits in the past 24 months? <i>Circle all that apply.</i> (Percentages)						
Analyses limited to respondents who met the following criterion:						
❖ CCC-A						
Response	Total	School	College/ university	Hospital	Nonres. Health Care	Industry
	(N = 6,652)	(N ≥ 688)	(N = 651)	(N ≥ 1,464)	(N = 3,387)	(N ≥ 70)
Journal self study	14.1	11.6	12.0	14.4	14.8	12.7
Statistical significance	$\chi^2(4) = 2.3, p = .689$					
Manufacturer sponsored CE	74.9	63.7	48.8	76.1	84.5	70.4
Statistical significance	$\chi^2(4) = 151.7, p = .000, \text{Cramer's } V = .272$					
On site at national conventions	43.1	34.5	74.2	41.1	40.7	57.7
Statistical significance	$\chi^2(4) = 99.0, p = .000, \text{Cramer's } V = .220$					
On site at state and local meetings	62.1	76.8	75.9	59.3	57.8	66.2
Statistical significance	$\chi^2(4) = 53.0, p = .000, \text{Cramer's } V = .161$					
Online at no cost	40.9	44.3	36.3	44.7	39.5	50.0
Statistical significance	$\chi^2(4) = 7.4, p = .118$					
Online through professional organizations	24.6	27.3	24.4	23.4	24.9	25.4
Statistical significance	$\chi^2(4) = 1.4, p = .850$					
Perspectives self study	2.0	2.9	2.6	0.7	2.2	0.0
Statistical significance	Too many cells (20%) have expected count less than 5.					

22. How do you locate ASHA CE courses? Circle all that apply. (Percentages)
 Analyses limited to respondents who met the following criterion:
 ❖ CCC-A

Response	Total (N = 6,652)	School (N ≥ 688)	College/ university (N ≥ 650)	Hospital (N ≥ 1,464)	Nonres. Health Care (N ≥ 3,387)	Industry (N ≥ 70)
Course search on ASHA Web site	23.3	25.4	20.0	22.1	23.6	21.1
Statistical significance		$\chi^2(4) = 2.7, p = .604$				
Direct mail	39.5	51.2	34.4	38.2	38.9	33.8
Statistical significance		$\chi^2(4) = 18.1, p = .001, \text{Cramer's } V = .094$				
E-mail distribution	31.6	38.8	43.2	38.8	25.3	25.4
Statistical significance		$\chi^2(4) = 50.1, p = .000, \text{Cramer's } V = .156$				
Flyers at conferences	18.2	21.9	29.2	18.7	15.3	33.8
Statistical significance		$\chi^2(4) = 28.2, p = .000, \text{Cramer's } V = .117$				
Internet search	18.3	20.8	17.2	16.1	17.9	25.4
Statistical significance		$\chi^2(4) = 3.5, p = .476$				
Print advertisements	22.7	25.3	21.2	20.8	22.5	29.6
Statistical significance		$\chi^2(4) = 2.6, p = .622$				
Recommendation of colleagues	24.2	33.3	25.8	28.6	19.9	21.1
Statistical significance		$\chi^2(4) = 28.2, p = .000, \text{Cramer's } V = .117$				



23. Rate your interest in each of the following topics for CE programs: (Percentages)

Scale: 1 = "Not at all interested" to

5 = "Very interested"

Analyses limited to respondents who met the following criterion:

❖ CCC-A

Interest	Total	School	College/ university	Hospital	Nonres. Health Care	Industry
Audiology business practices and management						
	(N = 6,279)	(N = 637)	(N = 590)	(N = 1,375)	(N = 3,245)	(N = 63)
1 Not at all interested	26.4	62.0	37.8	36.9	12.4	19.0
2	15.8	21.0	21.0	20.7	11.5	9.5
3	18.4	8.6	16.1	20.4	20.0	14.3
4	16.6	3.5	12.2	11.5	22.3	28.6
5 Very interested	22.9	4.9	12.9	10.4	33.9	28.6
Statistical significance	$\chi^2(16) = 429.7, p = .000, \text{Cramer's } V = .236$					
Auditory processing						
	(N = 6,330)	(N = 671)	(N = 602)	(N = 1,388)	(N = 3,236)	(N = 63)
1 Not at all interested	16.5	7.7	16.4	17.7	18.7	14.3
2	17.6	7.2	14.6	15.2	19.9	33.3
3	25.2	19.8	19.4	28.7	26.1	38.1
4	20.5	26.7	17.9	18.2	20.8	14.3
5 Very interested	20.2	38.6	31.6	20.2	14.5	0.0
Statistical significance	$\chi^2(16) = 134.9, p = .000, \text{Cramer's } V = .132$					

Table 23 continues on next page.

23. (Cont'd.) Rate your interest in each of the following topics for CE programs: (Percentages)
 Scale: 1 = "Not at all interested" to
 5 = "Very interested"
 Analyses limited to respondents who met the following criterion:
 ❖ CCC-A

Interest	Total	School	College/ university	Hospital	Nonres. Health Care	Industry
Clinical education						
	(N = 6,212)	(N = 641)	(N = 595)	(N = 1,354)	(N = 3,194)	(N = 63)
1 Not at all interested	10.3	10.1	7.7	11.5	10.3	14.3
2	14.8	17.3	6.7	15.0	15.0	33.3
3	32.8	36.2	24.2	30.9	35.7	23.8
4	25.4	22.8	24.9	25.8	24.7	23.8
5 Very interested	16.6	13.6	36.5	16.8	14.2	4.8
Statistical significance	$\chi^2(16) = 77.2, p = .000, \text{Cramer's } V = .100$					
Cochlear implants						
	(N = 6,279)	(N = 666)	(N = 591)	(N = 1,388)	(N = 3,202)	(N = 63)
1 Not at all interested	16.2	1.5	8.6	15.9	21.3	9.5
2	22.5	4.8	15.7	21.1	29.1	23.8
3	25.4	13.1	29.4	25.5	27.1	23.8
4	18.6	30.9	24.2	18.0	13.4	38.1
5 Very interested	17.2	49.7	22.0	19.5	9.1	4.8
Statistical significance	$\chi^2(16) = 372.9, p = .000, \text{Cramer's } V = .220$					

Table 23 continues on next page.

23. (Cont'd.) Rate your interest in each of the following topics for CE programs: (Percentages)
 Scale: 1 = "Not at all interested" to
 5 = "Very interested"
 Analyses limited to respondents who met the following criterion:
 ❖ CCC-A

Interest	Total	School	College/ university	Hospital	Nonres. Health Care	Industry
Early hearing detection and intervention						
	(N = 6,317)	(N = 663)	(N = 598)	(N = 1,389)	(N = 3,234)	(N = 63)
1 Not at all interested	8.4	1.8	8.0	10.1	9.1	9.5
2	14.3	5.1	13.9	10.8	17.7	33.3
3	23.2	15.1	23.1	17.0	27.5	33.3
4	26.0	32.3	28.8	23.0	26.3	9.5
5 Very interested	28.2	45.7	26.3	39.2	19.4	14.3
Statistical significance	$\chi^2(16) = 153.4, p = .000, \text{Cramer's } V = .140$					
Educational audiology						
	(N = 6,283)	(N = 674)	(N = 591)	(N = 1,371)	(N = 3,217)	(N = 63)
1 Not at all interested	17.8	0.7	10.2	21.1	21.8	14.3
2	22.0	0.7	19.3	23.7	27.1	28.6
3	24.5	1.0	32.8	23.6	28.2	23.8
4	17.6	15.0	22.8	20.5	15.5	28.6
5 Very interested	18.0	82.5	14.9	11.2	7.4	4.8
Statistical significance	$\chi^2(16) = 860.1, p = .000, \text{Cramer's } V = .333$					

Table 23 continues on next page.

23. (Cont'd.) Rate your interest in each of the following topics for CE programs: (Percentages)
 Scale: 1 = "Not at all interested" to
 5 = "Very interested"
 Analyses limited to respondents who met the following criterion:
 ❖ CCC-A

Interest	Total	School	College/ university	Hospital	Nonres. Health Care	Industry
Evidence-based practice						
	(N = 6,280)	(N = 651)	(N = 606)	(N = 1,377)	(N = 3,219)	(N = 63)
1 Not at all interested	6.9	8.6	4.5	6.5	7.0	19.0
2	12.8	13.8	8.4	10.3	14.6	0.0
3	28.9	26.6	20.5	27.7	31.3	33.3
4	30.1	28.3	34.5	30.4	30.1	19.0
5 Very interested	21.3	22.7	32.2	25.1	17.0	28.6
Statistical significance		$\chi^2(16) = 51.6, p = .000, \text{Cramer's } V = .082$				
Genetics of hearing loss						
	(N = 6,371)	(N = 659)	(N = 601)	(N = 1,409)	(N = 3,270)	(N = 63)
1 Not at all interested	4.7	4.2	4.5	4.0	5.2	14.3
2	8.2	8.0	10.5	6.5	8.6	4.8
3	25.5	20.5	21.0	20.9	29.5	19.0
4	35.1	32.6	30.1	35.8	35.5	47.6
5 Very interested	26.5	34.6	33.9	32.9	21.2	14.3
Statistical significance		$\chi^2(16) = 54.5, p = .000, \text{Cramer's } V = .083$				

Table 23 continues on next page.

23. (Cont'd.) Rate your interest in each of the following topics for CE programs: (Percentages)
 Scale: 1 = "Not at all interested" to
 5 = "Very interested"
 Analyses limited to respondents who met the following criterion:
 ❖ CCC-A

Interest	Total	School	College/ university	Hospital	Nonres. Health Care	Industry
Hearing and technology						
	(N = 6,394)	(N = 651)	(N = 602)	(N = 1,410)	(N = 3,293)	(N = 65)
1 Not at all interested	3.9	2.0	9.0	5.2	2.5	9.2
2	5.0	6.6	12.5	5.5	3.1	4.6
3	14.1	21.4	18.4	18.5	8.7	13.8
4	28.7	44.4	27.2	30.1	26.1	4.6
5 Very interested	48.2	25.7	32.9	40.6	59.6	67.7
Statistical significance	$\chi^2(16) = 194.9, p = .000, \text{Cramer's } V = .157$					
Industrial audiology and hearing conservation						
	(N = 6,294)	(N = 654)	(N = 595)	(N = 1,381)	(N = 3,229)	(N = 62)
1 Not at all interested	15.9	28.6	15.8	20.1	11.2	19.4
2	23.9	27.1	28.1	26.8	21.8	4.8
3	32.4	30.1	32.9	27.8	34.7	56.5
4	17.8	11.2	15.5	16.9	20.7	0.0
5 Very interested	9.9	3.1	7.7	8.5	11.6	19.4
Statistical significance	$\chi^2(16) = 95.1, p = .000, \text{Cramer's } V = .111$					

Table 23 continues on next page.

23. (Cont'd.) Rate your interest in each of the following topics for CE programs: (Percentages)
 Scale: 1 = "Not at all interested" to
 5 = "Very interested"
 Analyses limited to respondents who met the following criterion:
 ❖ CCC-A

Interest	Total	School	College/ university	Hospital	Nonres. Health Care	Industry
Multicultural issues						
	(N = 6,285)	(N = 654)	(N = 600)	(N = 1,384)	(N = 3,215)	(N = 63)
1 Not at all interested	18.4	13.8	13.7	17.4	20.5	23.8
2	25.7	21.1	16.3	23.6	29.7	28.6
3	34.5	36.5	38.7	37.4	31.7	23.8
4	16.6	22.8	23.0	16.8	14.1	23.8
5 Very interested	4.8	5.8	8.3	4.7	4.0	0.0
Statistical significance	$\chi^2(16) = 51.9, p = .000, \text{Cramer's } V = .082$					
Reimbursement and coding						
	(N = 6,363)	(N = 649)	(N = 609)	(N = 1,394)	(N = 3,278)	(N = 63)
1 Not at all interested	19.6	60.4	25.3	20.9	8.7	23.8
2	14.8	19.7	17.7	17.1	11.4	23.8
3	19.1	11.2	17.2	23.0	19.2	19.0
4	20.6	3.9	21.2	20.9	24.7	14.3
5 Very interested	26.0	4.8	18.6	18.1	36.0	19.0
Statistical significance	$\chi^2(16) = 435.2, p = .000, \text{Cramer's } V = .236$					

Table 23 continues on next page.

23. (Cont'd.) Rate your interest in each of the following topics for CE programs: (Percentages)

Scale: 1 = "Not at all interested" to

5 = "Very interested"

Analyses limited to respondents who met the following criterion:

❖ CCC-A

Interest	Total	School	College/ university	Hospital	Nonres. Health Care	Industry
Vestibular disorders and treatment						
	(N = 6,310)	(N = 651)	(N = 597)	(N = 1,395)	(N = 3,238)	(N = 63)
1 Not at all interested	23.1	51.5	31.0	22.7	15.5	33.3
2	16.7	25.5	17.3	15.4	15.1	33.3
3	21.6	15.1	23.6	18.8	23.1	19.0
4	18.4	6.5	16.2	20.9	20.6	9.5
5 Very interested	20.2	1.5	11.9	22.2	25.8	4.8
Statistical significance	Too many cells (20%) have expected count less than 5.					



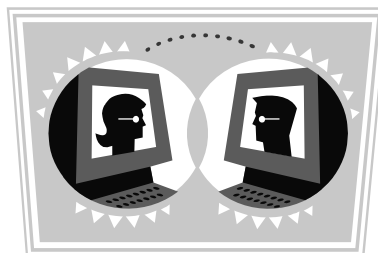
24. What resources would help you serve as an extern site preceptor to graduate students? *Circle all that apply.*

(Percentages)

Analyses limited to respondents who met the following criterion:

❖ CCC-A

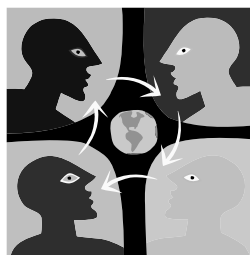
Resource	Total	School	College/ university	Hospital	Nonres. Health Care	Industry
	(N = 6,652)	(N ≥ 688)	(N= 651)	(N ≥ 1,464)	(N ≥ 3,387)	(N = 71)
ASHA policy documents	40.8	43.7	41.8	44.6	39.5	42.3
Statistical significance		$\chi^2(4) = 4.0, p = .411$				
Continuing education product or program (e.g., Web workshop, teleseminar)	43.4	41.8	40.4	47.8	42.7	46.5
Statistical significance		$\chi^2(4) = 4.8, p = .310$				
Convention session	23.7	18.1	32.1	25.4	22.9	29.6
Statistical significance		$\chi^2(4) = 14.7, p = .005, \text{Cramer's } V = .085$				
Coursework in graduate school	11.9	10.6	12.9	13.6	10.5	16.9
Statistical significance		$\chi^2(4) = 4.2, p = .384$				
Networking with other preceptors	46.9	50.4	43.0	51.4	46.1	42.3
Statistical significance		$\chi^2(4) = 6.3, p = .180$				
Web and print resources (e.g., <i>Leader</i> article, Web page resources)	39.0	42.7	40.9	46.7	34.7	42.3
Statistical significance		$\chi^2(4) = 20.2, p = .000, \text{Cramer's } V = .099$				



Professional Memberships

25. In addition to ASHA, in which of the following organizations are you a member? *Circle all that apply.* (Percentages)
 Analyses limited to respondents who met the following criterion:
 ❖ CCC-A

Organizations	Total (N = 6,652)	School (N ≥ 688)	College/ university (N = 651)	Hospital (N ≥ 1,464)	Nonres. Health Care (N = 3,387)	Industry (N = 71)
Academy of Doctors of Audiology (ADA)	7.4	1.3	3.7	3.1	11.6	12.7
Statistical significance	$\chi^2(4) = 54.4, p = .000, \text{Cramer's } V = .163$					
American Academy of Audiology (AAA)	66.1	40.8	74.5	58.7	75.3	57.7
Statistical significance	$\chi^2(4) = 136.0, p = .000, \text{Cramer's } V = .258$					
Educational Audiology Association (EAA)	9.6	59.3	10.1	2.3	3.0	12.7
Statistical significance	$\chi^2(4) = 751.9, p = .000, \text{Cramer's } V = .606$					
Military Audiology Association	1.1	0.4	0.5	2.7	0.4	0.0
Statistical significance	Too many cells (40%) have expected count less than 5.					
National Hearing Conservation Association	1.5	0.7	1.4	0.7	1.7	8.5
Statistical significance	Too many cells (30%) have expected count less than 5.					
State Speech-Language-Hearing Association	44.7	42.2	57.3	34.7	48.6	12.7
Statistical significance	$\chi^2(4) = 48.6, p = .000, \text{Cramer's } V = .154$					



Ethics

26. Use the scale below to respond to the three questions about ASHA's Code of Ethics. (Percentages) Scale: 1 = "Not at all ..." to 5 = "Very ..." 9 = "Don't know" Analyses limited to respondents who met the following criterion: ❖ CCC-A						
Response	Total	School	College/ university	Hospital	Nonres. Health Care	Industry
How relevant is the Code to your work?						
	(N = 6,478)	(N = 674)	(N = 641)	(N = 1,434)	(N = 3,308)	(N = 69)
1 Not at all (relevant)	1.6	1.0	0.0	0.9	2.0	8.7
2	2.7	2.7	2.7	3.6	2.5	8.7
3	9.3	10.4	8.0	8.9	9.5	8.7
4	18.7	23.9	15.0	18.1	18.3	13.0
5 Very (relevant)	57.5	53.0	67.9	58.2	57.7	39.1
9 Don't know	10.1	9.1	6.6	10.3	9.9	21.7
Statistical significance	Too many cells (23%) have expected count less than 5.					
In general, how out of touch is the Code with workplace realities?						
	(N = 6,442)	(N = 671)	(N = 629)	(N = 1,435)	(N = 3,288)	(N = 69)
1 Not at all (out of touch)	10.7	8.9	12.7	13.1	9.9	4.3
2	17.6	19.8	20.2	18.5	16.2	17.4
3	20.2	20.9	17.6	17.8	21.9	13.0
4	19.6	16.5	22.3	19.6	19.6	21.7
5 Very (out of touch)	6.1	4.8	4.3	5.4	7.4	8.7
9 Don't know	25.9	29.1	22.9	25.6	25.0	34.8
Statistical significance	$\chi^2(20) = 21.6, p = .360$					
Table 26 continues on next page.						

26. (Cont'd.) Use the scale below to respond to the three questions about ASHA's Code of Ethics. (Percentages)

Scale: 1 = "Not at all ..." to

5 = "Very ..."

9 = "Don't know"

Analyses limited to respondents who met the following criterion:

❖ CCC-A

Response	Total	School	College/ university	Hospital	Nonres. Health Care	Industry
How thorough is the Code?						
	(N = 6,429)	(N = 667)	(N = 624)	(N = 1,431)	(N = 3,287)	(N = 69)
1 Not at all (thorough)	0.5	0.4	0.5	0.0	0.6	0.0
2	2.0	2.5	2.4	1.8	2.0	0.0
3	20.9	21.9	19.7	20.5	21.6	26.1
4	31.0	30.1	37.0	34.2	29.1	21.7
5 Very (thorough)	22.1	17.7	22.0	21.2	23.9	17.4
9 Don't know	23.5	27.3	18.4	22.2	22.8	34.8
Statistical significance	Too many cells (27%) have expected count less than 5.					



Demographics

27. Which of the following credentials do you hold? <i>Check all that apply.</i> (Percentages)						
Credential	Total	School	College/ university	Hospital	Nonres. Health Care	Industry
	(N = 6,652)	(N ≥ 688)	(N = 651)	(N = 1,464)	(N ≥ 3,387)	(N = 71)
CCC-A, ASHA Certificate of Clinical Competence in Audiology	100.0	100.0	100.0	100.0	100.0	100.0
Statistical significance	CCC-A is a constant					
CCC-SLP, ASHA Certificate of Clinical Competence in Speech-Language Pathology	0.0	0.0	0.0	0.0	0.0	0.0
Statistical significance	CCC-SLP is a constant					
ABA, American Board of Audiology certification	10.9	5.7	10.6	9.6	13.2	4.2
Statistical significance	$\chi^2(4) = 14.1, p = .007, \text{Cramer's } V = .083$					



28. Why have you maintained your CCC-A? Circle all that apply. (Percentages)
 Analyses limited to respondents who met the following criterion:
 ❖ CCC-A

Reasons	Total (N = 6,652)	School (N ≥ 688)	College/ university (N ≥ 650)	Hospital (N ≥ 1,464)	Nonres. Health Care (N ≥ 3,387)	Industry (N = 71)
Consumer recognition	30.8	29.8	19.4	23.4	36.4	29.6
Statistical significance		$\chi^2(4) = 39.0, p = .000, \text{Cramer's } V = .138$				
Increased opportunities for student supervision	35.3	22.7	54.8	49.9	29.7	42.3
Statistical significance		$\chi^2(4) = 109.0, p = .000, \text{Cramer's } V = .231$				
Portability for obtaining state licensure	50.9	49.8	42.6	46.8	53.1	78.9
Statistical significance		$\chi^2(4) = 18.6, p = .001, \text{Cramer's } V = .095$				
Overall value of the credential	35.4	43.0	36.3	30.9	34.6	21.1
Statistical significance		$\chi^2(4) = 13.5, p = .009, \text{Cramer's } V = .081$				
Required by my employer	40.9	48.3	67.2	58.3	28.4	12.7
Statistical significance		$\chi^2(4) = 189.8, p = .000, \text{Cramer's } V = .304$				
Required by third party papers	32.7	19.5	15.7	25.8	42.4	25.4
Statistical significance		$\chi^2(4) = 102.1, p = .000, \text{Cramer's } V = .223$				



29. Identify the degrees you have earned. *Count only actual degrees--not equivalencies or certificated--and do not include degrees expected but not yet conferred. Circle all that apply.*

(Percentages)

Analyses limited to respondents who met the following criterion:

❖ CCC-A

Degrees	Total	School	College/ university	Hospital	Nonres. Health Care	Industry
	(N = 6,652)	(N = 689)	(N = 651)	(N ≥ 1,464)	(N ≥ 3,387)	(N = 71)
Master's	87.4	91.7	81.9	87.4	87.4	83.1
Statistical significance		$\chi^2(4) = 11.4$, $p = .023$, Cramer's V = .075				
AuD	37.6	24.8	30.4	38.5	42.5	62.0
Statistical significance		$\chi^2(4) = 41.0$, $p = .000$, Cramer's V = .141				
PhD	9.3	1.9	46.2	9.0	4.2	0.0
Statistical significance		$\chi^2(4) = 411.9$, $p = .000$, Cramer's V = .448				
Other doctorate	0.8	1.0	2.8	0.7	0.5	0.0
Statistical significance		Too many cells (40%) have expected count less than 5.				

30. Are you considering getting a research doctorate (PhD) degree? *Select one response, considering only "PhD"--not other types of doctorates.* (Percentages)

Analyses limited to respondents who met the following criterion:

❖ CCC-A

Response	Total	School	College/ university	Hospital	Nonres. Health Care	Industry
	(N = 6,529)	(N = 682)	(N = 619)	(N = 1,422)	(N = 3,346)	(N = 71)
Yes, I hope to start within the next 5 years.	1.0	0.7	1.9	1.5	0.8	0.0
Maybe, but I don't know when.	8.0	11.1	6.8	9.1	7.1	21.1
No, I'm not interested.	81.1	85.8	42.0	79.3	87.7	74.6
I'm in a PhD program now.	1.2	0.4	3.9	1.9	0.5	4.2
I already have a PhD.	8.8	1.9	45.4	8.2	3.9	0.0
Statistical significance		Too many cells (36%) have expected count less than 5.				

31. How many years have you been employed in the audiology profession? EXCLUDE your supervised year of experience, i.e., CF or “fourth year.” Round to the nearest full year. Enter “0” if you have never been employed as an audiologist.

Analyses limited to respondents who met the following criterion:

❖ CCC-A

Years Experience	Total	School	College/ university	Hospital	Nonres. Health Care	Industry
	(N ≥ 6,614)	(N ≥ 682)	(N ≥ 645)	(N ≥ 1,452)	(N ≥ 3,380)	(N ≥ 71)
Mean	18.5	19.3	21.9	17.3	18.2	14.1
Standard deviation	9.8	8.8	9.9	9.4	9.8	8.7
25th percentile	10.0	12.0	14.0	9.0	10.0	7.0
50th percentile (median)	18.0	20.0	22.0	17.0	17.0	12.0
75th percentile	27.0	26.0	30.0	25.0	27.0	17.8
Mode	10.0	30.0	30.0	5.0	10.0	7.0
Statistical significance	$F(4, 2035) = 10.5, p = .000$					
Experience in categories (percentages)						
1–3 years	1.8	1.9	0.5	1.6	2.0	0.0
4–6 years	9.7	7.5	4.2	13.4	9.6	16.7
7–9 years	10.9	6.7	8.5	10.9	11.8	20.8
10–12 years	11.9	8.9	8.3	11.0	13.0	20.8
13–15 years	9.7	11.0	8.5	9.8	10.2	8.3
16–18 years	7.8	8.8	8.3	9.9	6.5	16.7
19–21 years	9.1	13.0	10.8	9.9	8.1	0.0
22–24 years	8.1	11.0	6.0	8.3	8.3	0.0
25–27 years	7.8	10.3	11.3	6.7	7.5	0.0
28 or more years	23.2	20.8	33.5	18.5	22.8	16.7
Statistical significance	Too many cells (22%) have expected count less than 5.					

32. What is your sex? (Percentages)
Analyses limited to respondents who met the following criterion:
❖ CCC-A

Sex	Total	School	College/ university	Hospital	Nonres. Health Care	Industry
	(N = 6,649)	(N = 689)	(N = 650)	(N = 1,462)	(N = 3,387)	(N = 71)
Female	81.5	90.0	69.7	83.3	81.4	70.4
Male	18.5	10.0	30.3	16.7	18.6	29.6
Statistical significance	$\chi^2(4) = 37.7, p = .000$, Cramer's V = .136					

33. Which one of the following best describes where you work? (Percentages)
Analyses limited to respondents who met the following criterion:
❖ CCC-A

Response	Total	School	College/ university	Hospital	Nonres. Health Care	Industry
	(N = 6,575)	(N = 678)	(N = 639)	(N = 1,454)	(N = 3,366)	(N = 62)
Metropolitan/urban area	47.1	39.2	58.7	68.4	39.5	61.3
Suburban area	35.8	36.3	23.0	23.7	44.4	38.7
Rural area	14.7	24.0	18.3	7.8	16.0	0.0
Not employed (SKIP to Q. 35.)	2.4	0.4	0.0	0.0	0.0	0.0
Statistical significance	Too many cells (30%) have expected count less than 5.					
Excluding those who are unemployed						
	(N = 6,419)	(N = 675)	(N = 639)	(N = 1,454)	(N = 3,366)	(N = 62)
Metropolitan/urban area	48.3	39.4	58.7	68.4	39.5	61.3
Suburban area	36.7	36.4	23.0	23.7	44.4	38.7
Rural area	15.1	24.1	18.3	7.8	16.0	0.0
Statistical significance	$\chi^2(8) = 147.1, p = .000$, Cramer's V = .190					

34. In what state do you currently perform your primary employment function? *Use standard post office two-letter code, e.g., TX for Texas.*

Analyses limited to respondents who met the following criteria:

- ❖ CCC-A
- ❖ Employed full-time or part-time

State	N	State	N
Alabama	112	Montana	7
Alaska	11	Nebraska	86
Arizona	122	Nevada	18
Arkansas	55	New Hampshire	32
California	439	New Jersey	137
Colorado	155	New Mexico	31
Connecticut	113	New York	495
Delaware	25	North Carolina	156
District of Columbia	31	North Dakota	27
Florida	308	Ohio	374
Georgia	119	Oklahoma	67
Hawaii	17	Oregon	67
Idaho	23	Pennsylvania	333
Illinois	233	Rhode Island	15
Indiana	164	South Carolina	63
Iowa	94	South Dakota	23
Kansas	87	Tennessee	177
Kentucky	75	Texas	369
Louisiana	88	Utah	63
Maine	41	Vermont	38
Maryland	140	Virginia	155
Massachusetts	186	Washington	181
Michigan	203	West Virginia	65
Minnesota	151	Wisconsin	183
Mississippi	60	Wyoming	5
Missouri	137	Total	6,357

34. (Cont'd.) In what state do you currently perform your primary employment function? (See Appendix for details on the geographic regions and divisions.) (Percentages)

Analyses limited to respondents who met the following criteria:

- ❖ CCC-A
- ❖ Employed full-time or part-time

Region/Division	Total	School	College/ university	Hospital	Nonres. Health Care	Industry
	(N = 6,357)	(N ≥ 678)	(N ≥ 645)	(N = 1,445)	(N ≥ 3,366)	(N = 63)
Northeast	21.9	14.7	20.0	25.8	22.0	23.8
Middle Atlantic	15.2	10.6	15.6	17.6	15.1	14.3
New England	6.7	4.1	4.3	8.2	6.9	9.5
Midwest	27.7	29.2	31.6	29.4	25.8	33.3
East North Central	18.2	16.6	18.6	20.6	17.4	19.0
West North Central	9.5	12.7	13.2	8.9	8.4	14.3
South	32.5	30.5	33.3	24.9	36.4	19.0
East South Central	6.7	4.9	9.4	4.8	7.5	4.8
South Atlantic	16.7	19.6	15.5	13.1	17.9	14.3
West South Central	9.1	6.0	8.4	7.0	11.0	0.0
West	17.9	25.5	15.0	19.9	15.8	23.8
Mountain	6.7	14.1	6.3	5.6	5.3	14.3
Pacific	11.3	11.3	8.7	14.3	10.5	9.5
Statistical significance		FOR 4 REGIONS: $\chi^2(12) = 41.4$, $p = .000$, Cramer's V = .082 FOR 9 DIVISIONS: Too many cells (20%) have expected count less than 5.				



35. In what year were you born? (Note: year of birth was recoded into age.)
 Analyses limited to respondents who met the following criterion:
 ❖ CCC-A

Age	Total	School	College/ university	Hospital	Nonres. Health Care	Industry
	(N = 6,529)	(N ≥ 676)	(N ≥ 641)	(N ≥ 1,435)	(N ≥ 3,335)	(N ≥ 71)
Mean	45.1	46.6	48.6	43.6	44.4	40.8
Standard deviation	10.4	9.3	9.8	9.9	10.4	10.7
25th percentile	36.0	39.0	40.0	36.0	35.0	31.3
50th percentile (median)	45.0	48.0	50.0	43.0	44.0	38.0
75th percentile	53.0	54.0	56.0	51.0	53.0	50.0
Mode	54.0	54.0	55.0	39.0	36.0	38.0
Statistical significance	$F(4, 2011) = 12.8, p = .000$					
Age in categories (percentages)						
34 and younger	20.1	14.3	10.7	22.6	22.5	37.5
35–44	27.6	24.1	23.7	30.2	27.8	37.5
45–54	31.2	40.6	34.9	31.3	30.1	4.2
55–64	18.7	20.5	26.9	14.4	18.2	20.8
65 and older	2.3	0.4	3.7	1.6	1.5	0.0
Statistical significance	Too many cells (20%) have expected count less than 5.					



36. Which one of the following best describes your ethnicity? *Circle one response only.* (Percentages)
 Analyses limited to respondents who met the following criterion:
 ❖ CCC-A

Ethnicity	Total	School	College/ university	Hospital	Nonres. Health Care	Industry
	(N = 6,551)	(N = 679)	(N = 630)	(N = 1,442)	(N = 3,345)	(N = 71)
Hispanic or Latino	1.6	0.3	1.4	2.5	1.5	0.0
Not Hispanic or Latino	98.4	99.7	98.6	97.5	98.5	100.0
Statistical significance	Too many cells (30%) have expected count less than 5.					

37. Which of the following best describes your race? *Circle all that apply.* (Percentages)
 Analyses limited to respondents who met the following criterion:
 ❖ CCC-A

Race	Total	School	College/ university	Hospital	Nonres. Health Care	Industry
	(N = 6,538)	(N = 686)	(N = 624)	(N = 1,436)	(N = 3,342)	(N = 71)
Single race only	99.4	99.3	99.5	100.0	99.2	100.0
American Indian or Alaska Native	0.2	0.0	0.5	0.2	0.3	0.0
Asian	2.1	0.4	3.4	3.4	1.9	0.0
Black or African American	1.4	1.8	2.9	2.1	0.5	4.2
Native Hawaiian or Other Pacific Islander	0.2	0.3	0.0	0.5	0.2	0.0
White	95.4	96.8	93.0	93.8	96.3	95.8
Multiple races	0.6	0.7	0.5	0.0	0.8	0.0
Statistical significance	Too many cells have expected count less than 5.					

38. Including this one, approximately how many surveys have you been asked to complete during the past 12 months? Analyses limited to respondents who met the following criterion: ❖ CCC-A						
Surveys	Total	School	College/ university	Hospital	Nonres. Health Care	Industry
ASHA sponsored, number received						
	(N = 4,902)	(N = 518)	(N = 447)	(N = 1,063)	(N = 2,534)	(N = 41)
Mean	1.2	1.1	1.7	1.1	1.1	1.4
Standard deviation	0.9	0.9	1.1	0.8	0.8	0.9
25th percentile	1.0	1.0	1.0	1.0	1.0	1.0
50th percentile (median)	1.0	1.0	1.0	1.0	1.0	1.0
75th percentile	2.0	1.0	2.0	2.0	1.0	2.0
Mode	1.0	1.0	1.0	1.0	1.0	1.0
Statistical significance	$F(4, 1502) = 13.0, p = .000$					
ASHA sponsored, number completed						
	(N = 4,731)	(N = 511)	(N = 441)	(N = 1,004)	(N = 2,440)	(N = 35)
Mean	1.0	1.0	1.5	1.0	1.0	1.2
Standard deviation	0.7	0.8	1.0	0.6	0.6	0.7
25th percentile	1.0	1.0	1.0	1.0	1.0	1.0
50th percentile (median)	1.0	1.0	1.0	1.0	1.0	1.0
75th percentile	1.0	1.0	2.0	1.0	1.0	1.0
Mode	1.0	1.0	1.0	1.0	1.0	1.0
Statistical significance	$F(4, 1447) = 14.9, p = .000$					

Table 38 continues on next page.

38. (Cont'd.) Including this one, approximately how many surveys have you been asked to complete during the past 12 months?

Analyses limited to respondents who met the following criterion:

❖ CCC-A

Surveys	Total	School	College/ university	Hospital	Nonres. Health Care	Industry
Non-ASHA sponsored, number received						
	(N = 3,928)	(N = 400)	(N = 363)	(N = 836)	(N = 2,089)	(N = 30)
Mean	1.6	1.3	2.4	1.5	1.6	2.2
Standard deviation	1.6	1.3	1.9	1.6	1.6	1.4
25th percentile	0.0	0.0	1.0	0.0	0.0	1.0
50th percentile (median)	1.0	1.0	2.0	1.0	1.0	2.0
75th percentile	2.0	2.0	3.2	2.0	2.0	3.0
Mode	0.0	0.0	2.0	0.0	0.0	2.0
Statistical significance	$F(4, 1212) = 10.5, p = .000$					
Non-ASHA sponsored, number completed						
	(N = 3,933)	(N = 410)	(N = 394)	(N = 830)	(N = 2,071)	(N = 27)
Mean	1.2	1.0	1.8	1.2	1.2	1.7
Standard deviation	1.4	1.1	1.6	1.4	1.4	1.3
25th percentile	0.0	0.0	1.0	0.0	0.0	1.0
50th percentile (median)	1.0	1.0	1.0	1.0	1.0	2.0
75th percentile	2.0	2.0	2.0	2.0	2.0	2.0
Mode	0.0	0.0	1.0	0.0	0.0	2.0
Statistical significance	$F(4, 1217) = 7.0, p = .000$					

Appendix

**Geographic
Regions and
Divisions of the
Country**

Northeast

- ◆ Middle Atlantic
 - New Jersey
 - New York
 - Pennsylvania
- ◆ New England
 - Connecticut
 - Maine
 - Massachusetts
 - New Hampshire
 - Rhode Island
 - Vermont

South

- ◆ East South Central
 - Alabama
 - Kentucky
 - Mississippi
 - Tennessee
- ◆ South Atlantic
 - Delaware
 - District of Columbia
 - Florida
 - Georgia
 - Maryland
 - North Carolina
 - South Carolina
 - Virginia
 - West Virginia
- ◆ West South Central
 - Arkansas
 - Louisiana
 - Oklahoma
 - Texas

Midwest

- ◆ East North Central
 - Illinois
 - Indiana
 - Michigan
 - Ohio
 - Wisconsin
- ◆ West North Central
 - Iowa
 - Kansas
 - Minnesota
 - Missouri
 - Nebraska
 - North Dakota
 - South Dakota

West

- ◆ Mountain
 - Arizona
 - Colorado
 - Idaho
 - Montana
 - Nevada
 - New Mexico
 - Utah
 - Wyoming
- ◆ Pacific
 - Alaska
 - California
 - Hawaii
 - Oregon
 - Washington

Statistics used in the frequency report include the following:

Notation	Description
Response rate	<p>The percentage of individuals who were included in the sample, minus any who were ineligible</p> $RR = \frac{(C + P)}{S - (Ret + I)}$ <p>Where</p> <ul style="list-style-type: none"> RR = Response rate C = Number of completed surveys P = Number of partial surveys S = Sample size Ret = Ineligible because of retirement I = Ineligible for other reasons (e.g., no longer in the field, not employed in schools, on leave of absence) $RR = \frac{2,181}{4,000 - (5 + 30)} = 55.0\%$
<i>n</i>	The number in the sample. In this report, the number of people who answered a particular question.
Mean	<p>A measure of central tendency; an average. Add the total of all the values and divide by the number of items.</p> <p>Example: $(1 + 1 + 7 + 34 + 88) / 5 = 26.2$</p>
Standard deviation	<p>A statistic that shows the spread of scores in a distribution. Used with means. The larger the standard deviation, the more widely the scores are spread out around the mean.</p> <p>About 68% of the measurement is between 1 standard deviation greater than and 1 standard deviation smaller than the mean; 95% are plus/minus 2 standard deviations.</p> <p>Example: $(1 + 1 + 7 + 34 + 88)$ Standard deviation = 37.1</p> <p>Therefore, 68% of the responses are between -10.9 $(26.2 - 37.1)$ and 63.3 $(26.2 + 37.1)$</p>

Notation	Description
Median	A measure of central tendency; the midpoint. Arrange the values in order, from lowest to highest. Select the value in the middle position. Example: 1, 1, 7, 34, 88 Median = 7
Mode	A measure of central tendency. The value that occurs more frequently than any other value. Example: 1, 1, 7, 34, 88 Mode = 1
Statistical significance	Describes whether a value is larger or smaller than would be expected by chance alone. Note that a large sample size can lead to results that are “statistically significant” even though the results themselves may not have substantive or practical significance. This is particularly true for chi-square (X^2) tests.
Chi square (X^2)	A test used to assess the statistical significance of a finding where the variables being assessed are nominal (e.g., “CCC-A” and “CCC-A”) or ordinal (e.g., “Poor,” “Fair,” “Good,” and “Excellent”). It measures whether there are statistically significant differences between the observed frequencies and the expected frequencies of two variables. The larger the observed frequency is in comparison with the expected frequency, the larger the X^2 statistic and the more likely the difference is statistically significant. When the sample size is large, large X^2 values (that are statistically significant) can be obtained even for weak associations. ¹
Cramer’s V and Phi	A measure of the <u>strength</u> of the association, used with X^2 statistics to identify the meaningfulness of a relationship. The X^2 value may be large with a probability of having occurred by chance that is small ($p < .05$). That is, it is “statistically significant at the .05 level.” Cramer’s V and Phi tell us “so what”: how strong (practically important) is the relationship between the variables. The larger the value of Cramer’s V/Phi, the stronger the association. Phi is used for 2 x 2 tables; Cramer’s V is reported for tables larger than 2 x 2. These statistics are only presented in this report when $p \leq .05$.
<i>F</i>	The statistic computed when conducting an analysis of variance.
Analysis of Variance	Tests the statistical significance of differences in means on two or more groups. Used for categorical independent variables (e.g., types of schools) and a continuous or interval dependent variable (e.g., salaries).
<i>p</i>	Probability. Found in expressions such as $p = .003$, meaning “The probability that this result could have been produced by chance is 1 in 3/1000ths.” The smaller the number, the less likely that the result was due to chance. The <i>p</i> value is the actual probability associated with an obtained statistical result, such as X^2 . ¹
<i>df</i>	Degrees of freedom. The number of values that are free to vary when computing a statistic. Used in interpreting a X^2 ratio. It is calculated in a cross-tabulation as $(R - 1) (C - 1)$ or (the number of rows minus 1) times (the number of columns minus 1). In a 3 x 4 table, <i>df</i> would be 6.

¹ Vogt, W. P. (1999). *Dictionary of statistics & methodology* (2nd ed.). Newbury Park, CA: Sage.