



AMERICAN
SPEECH-LANGUAGE-
HEARING
ASSOCIATION

Schools Survey Report:
Annual Salary and Hourly Wage Trends
2004–2018

Gail Brook, Surveys and Analysis
American Speech-Language-Hearing Association
2200 Research Boulevard
Rockville, MD 20850-3289
October 1, 2018

Contents

Introduction.....	2
Survey Report Highlights.....	2
Salary Basis.....	3
Limitations of Survey Analysis.....	4
Academic Year Salaries.....	5
Calendar Year Salaries.....	8
Hourly Wages.....	9
Hourly Wages of Contractors.....	10
Unpaid Student Debt.....	11
Survey Methodology.....	12
Response Rates.....	12
Suggested Citation.....	12
Additional Information.....	12
Questions?.....	12
Acknowledgment.....	12
Appendix.....	13
Data Tables.....	14
Key of Geographic Regions/Divisions and Corresponding States.....	17

Introduction

The American Speech-Language-Hearing Association (ASHA) conducted the *2018 Schools Survey* to gather information about professional issues related to school-based services. Results from this survey are presented in a series of reports, including this report on speech-language pathologist (SLP) annual salary and hourly wage trends.

The salaries presented in this report are full-time gross salaries (salaries prior to deductions). The statistic that is presented is the median (i.e., middle or 50th percentile). Median salaries are presented because they are more stable than means (i.e., averages) and are less sensitive to extreme values. To preserve confidentiality and provide more certain results, we have not reported data for groups of fewer than 25.

Findings from the 2004, 2006, 2008, 2010, 2012, 2014, and 2016 *ASHA Schools Surveys* are included in this report for comparative purposes. Questions differ among surveys, so data on all topics are not available for all survey years.

Survey Report Highlights

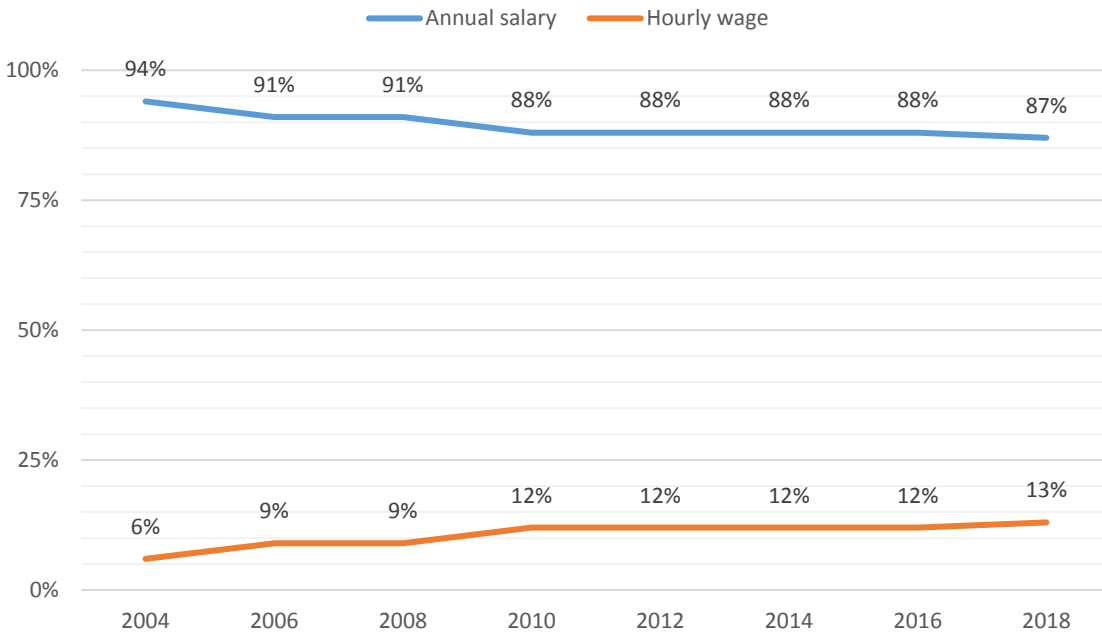
- In 2018, 87% of SLPs were paid an annual salary in their primary jobs—down gradually from 94% in 2004.
- In 2018, 90% of SLPs who were paid an annual salary in their primary jobs worked 9 or 10 months per year—the same or about the same as in recent past years (90%–92% from 2004 to 2016).
- In 2018, SLPs reported an overall median academic year salary of \$63,338, up from \$62,000 in 2016 (a 2% increase).
- From 2004 to 2018, SLPs in secondary schools consistently reported the highest or among the highest median academic year salaries.
- From 2004 to 2018, median academic year salaries of SLPs were highest in the Northeast and lowest in the South.
- In 2018, SLPs reported an overall median calendar year salary of \$72,000, up from \$70,154 in 2016 (a 3% increase) but still slightly less than the \$72,107 reported in 2014.
- In 2018, SLPs reported an overall median hourly wage of \$51.00—up from \$49.50 in 2016 (a 3% increase) but still less than the \$53.76 reported in 2014.
- In 2018, 27% of SLPs had unpaid student debt—the same or about the same as in recent past years (26%–27% from 2012 to 2016). The median amount owed was \$30,000, compared with \$20,000–\$30,000 from 2010 to 2016.

Salary Basis

Annual Salary or Hourly Wage

In 2018, 87% of SLPs were paid an annual salary in their primary jobs—down gradually from 94% in 2004 (see Figure 1). The remainder were paid at an hourly rate.

Figure 1. *Percentage of school-based SLPs who are paid an annual salary or an hourly wage in their primary jobs, by year.*

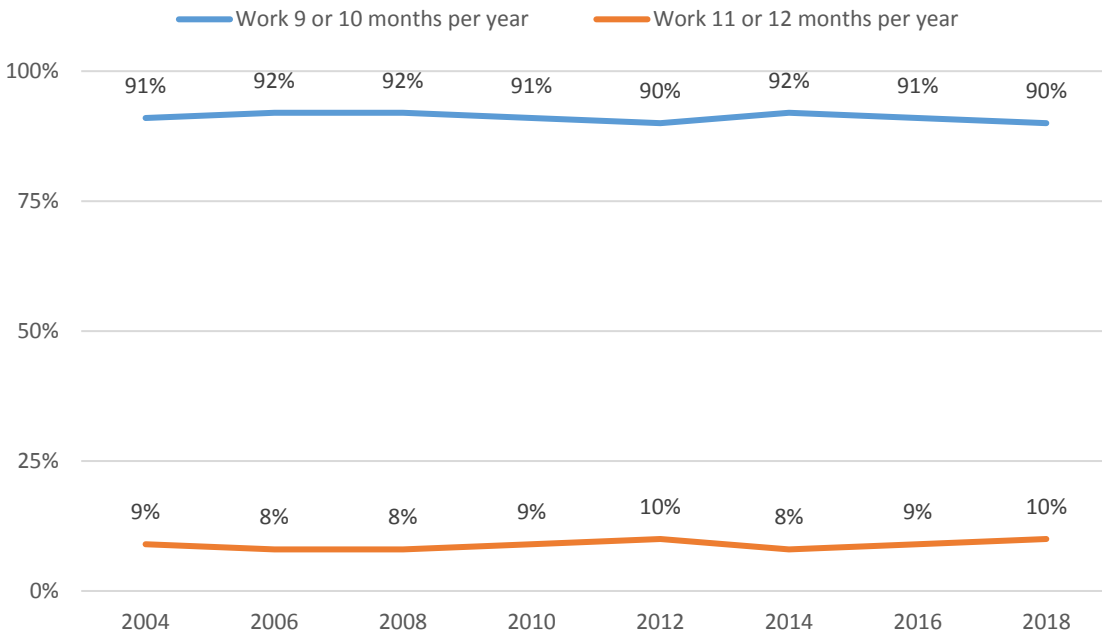


Note. These data are from the 2004, 2006, 2008, 2010, 2012, 2014, 2016, and 2018 ASHA Schools Surveys. $n = 2,597$ (2004); $n = 2,433$ (2006); $n = 2,416$ (2008); $n = 2,418$ (2010); $n = 2,411$ (2012); $n = 1,694$ (2014); $n = 1,798$ (2016); $n = 2,104$ (2018).

Academic or Calendar Year

In 2018, 90% of SLPs who were paid an annual salary in their primary jobs worked 9 or 10 months per year (an academic year)—the same or about the same as in recent past years (90%–92% from 2004 to 2016; see Figure 2). The remainder worked 11 or 12 months per year (a calendar year).

Figure 2. *Percentage of school-based SLPs who are paid an annual salary in their primary jobs and who work 9 or 10 months per year or 11 or 12 months per year, by year.*



Note. These data are from the 2004, 2006, 2008, 2010, 2012, 2014, and 2016 *ASHA Schools Surveys*. $n = 2,184$ (2004); $n = 1,827$ (2006); $n = 1,792$ (2008); $n = 1,979$ (2010); $n = 1,992$ (2012); $n = 1,392$ (2014); $n = 1,503$ (2016); $n = 1,720$ (2018).

Limitations of Survey Analysis

Because the percentage of SLPs who were paid on an hourly basis or who worked 11 or 12 months per year is so small, most of the analyses included in this report are limited to SLPs who were paid an annual salary and who worked 9 or 10 months per year.

Academic Year Salaries

In 2018, SLPs reported an overall median academic year salary of \$63,338, up from \$62,000 in 2016 (a 2% increase; see Appendix Table 1). The median salary is the salary at which half of the SLPs reported more than that amount, and half reported less.

As shown in the remainder of the report, numerous variables—including work setting and role, years of experience in the profession and in the schools, geographic region, and the type of community in which one works—affect earnings.

Academic Year Salaries, by School Setting

The median academic year salary of SLPs typically varied by school setting. From 2004 to 2018, SLPs in secondary schools consistently reported the highest or among the highest salaries (see Appendix Table 1).

Academic Year Salaries, by Work Role

Administrators, Supervisors, and Directors

In 2018, SLPs who held the position of administrator, supervisor, or director reported a median academic year salary of \$63,123, down slightly from \$64,520 in 2014 (a 2% decline). (These data are not shown in any figure or table.)

Clinical Service Providers

In 2018, 92% of SLPs held the position of clinical service provider—the same or about the same as in recent past years (90%–94% from 2004 to 2016). (These data are not shown in any figure or table.) They reported a median academic year salary of \$63,551, up from \$62,000 in 2016 (a 3% increase; see Appendix Table 2).

From 2004 to 2018, clinical service providers in secondary schools consistently reported the highest or among the highest salaries.

Diagnosticians

In 2018, SLPs who held the position of diagnostician reported a median academic year salary of \$62,272, down slightly from \$63,000 in 2016 (a 1% decline). (These data are not shown in any figure or table.)

Special Education Teachers

In 2018, SLPs who held the position of special education teacher reported a median academic year salary of \$55,515, down slightly from \$55,800 in 2016 (a 1% decline). (These data are not shown in any figure or table.)

Academic Year Salaries, by Years of Experience in the Profession

As would be expected, the median academic year salary of SLPs tended to increase with years of experience in the profession. In 2018, the most seasoned SLPs earned \$28,141 more per year than those SLPs who were just starting out (see Appendix Table 3). From 2004 to 2016, the differential ranged from \$18,672 to \$24,859.

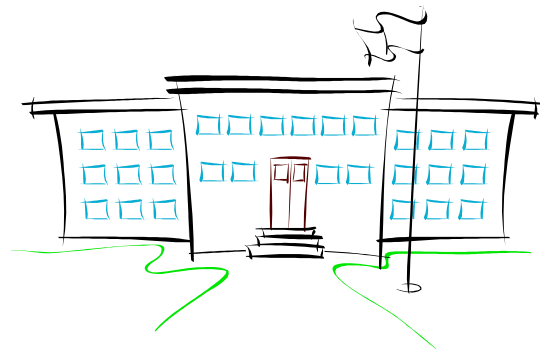
Academic Year Salaries, by Years of Experience in the Schools

The median academic year salary of SLPs tended to increase with years of experience in the schools. In 2018, SLPs with the most experience earned \$29,000 more per year than those SLPs with the least experience (see Table 1). From 2010 to 2016, the differential ranged from \$19,040 to \$24,800.

Table 1. Median academic year salaries of SLPs, by years of experience in the schools and year.

Years of experience in the schools	\$				
	2010 (n = 1,515)	2012 (n = 1,572)	2014 (n = 1,088)	2016 (n = 1,197)	2018 (n = 1,362)
1–3	45,200	48,000	n/r	53,506	51,000
4–6	49,000	51,000	51,000	52,824	55,000
7–9	54,000	53,000	55,000	56,000	61,327
10–12	56,000	56,997	56,000	61,193	64,000
13–15	58,731	60,000	61,634	64,000	64,000
16–18	60,000	64,000	62,000	65,000	66,932
19–21	65,878	70,000	65,462	68,219	70,000
22–24	67,451	65,896	64,876	71,304	70,459
25–27	64,500	68,000	71,755	72,593	75,000
28 or more	70,000	70,000	74,847	72,546	80,000

Note. These data are from the 2010, 2012, 2014, 2016, and 2018 ASHA Schools Surveys. n/r = not reported (to preserve confidentiality and provide more certain results, we do not report data for groups of fewer than 25).



Academic Year Salaries, by Geographic Region

The median academic year salary of SLPs varied by geographic region of the country. From 2004 to 2018, salaries were highest in the Northeast and lowest in the South (see Appendix Tables 4a and 4b).

Academic Year Salaries, by State

The median academic year salary of SLPs typically varied by state. From 2008 to 2018, SLPs in California consistently reported the highest or among the highest salaries (see Table 2).

Table 2. Median academic year salaries of school-based SLPs, by state and year.

State	\$					
	2008 (n = 1,314)	2010 (n = 1,191)	2012 (n = 1,238)	2014 (n = 771)	2016 (n = 846)	2018 (n = 1,048)
Arizona	56,500	n/r	n/r	n/r	n/r	64,956
California	76,700	75,000	74,087	77,000	85,000	85,834
Colorado	56,000	n/r	60,000	n/r	n/r	69,579
Florida	56,000	50,000	52,500	52,200	54,000	54,500
Georgia	59,500	54,000	58,600	55,336	54,000	55,750
Illinois	62,000	56,824	65,491	70,000	66,500	70,000
Indiana	54,000	50,000	53,000	n/r	n/r	54,582
Louisiana	45,996	50,000	50,471	n/r	n/r	49,000
Maryland	68,500	64,536	70,000	74,000	72,029	75,937
Massachusetts	63,000	65,000	68,500	70,500	75,000	74,000
Michigan	65,313	65,500	66,650	70,000	70,400	70,000
Minnesota	58,000	59,996	62,555	n/r	62,980	69,000
Missouri	48,322	44,000	52,150	53,500	52,500	50,000
New Jersey	73,300	80,000	74,000	76,750	72,090	70,000
New York	73,000	70,300	71,000	74,000	76,356	82,000
North Carolina	49,905	50,000	50,000	47,627	53,159	60,000
Ohio	61,500	60,000	60,000	58,500	55,000	63,000
Pennsylvania	55,500	58,000	58,000	68,500	59,250	60,000
Texas	52,000	53,806	55,000	56,000	60,500	60,000
Wisconsin	55,490	52,721	56,000	63,000	57,000	58,018

Note. These data are from the 2008, 2010, 2012, 2014, 2016, and 2018 ASHA Schools Surveys. The table presents median academic year salaries for states where 25 or more SLPs responded to the survey. *n/r* = not reported (to preserve confidentiality and provide more certain results, we do not report data for groups of fewer than 25).

Academic Year Salaries, by Type of Community

The median academic year salary of SLPs typically varied by the type of community in which they worked. From 2004 to 2018, salaries were higher in suburban and city/urban areas than in rural areas (see Appendix Table 5). In 2018, SLPs in rural and city/urban areas reported modest increases in their salaries from 2016; those in suburban areas reported a slight (less than 1%) decline.

Calendar Year Salaries

In 2018, SLPs reported an overall median calendar year salary of \$72,000—about the same as in recent past years (\$70,000 in 2012, \$72,107 in 2014, and \$70,154 in 2016; see Appendix Table 6).

Calendar Year Salaries, by School Setting

From 2004 to 2018, the median calendar year salary of SLPs varied by school setting (see Appendix Table 6).

Calendar Year Salaries, by Work Role

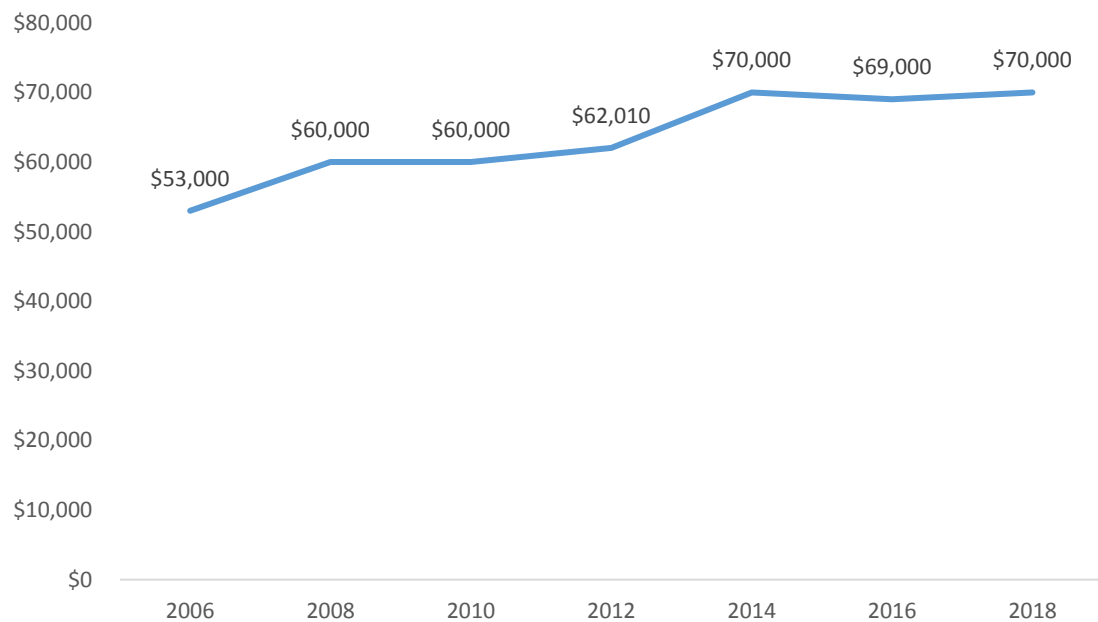
Administrators, Supervisors, and Directors

In 2018, SLPs who held the position of administrator, supervisor, or director reported a median calendar year salary of \$80,000, down from \$84,626 in 2016 (a 5% decline). (These data are not shown in any figure or table.)

Clinical Service Providers

In 2018, SLPs who held the position of clinical service provider reported a median calendar year salary of \$70,000—the same or about the same as in 2014 and 2016 (\$70,000 and \$69,000, respectfully; see Figure 3).

Figure 3. Median calendar year salaries of school-based SLPs who hold the position of clinical service provider, by year.



Note. These data are from the 2006, 2008, 2010, 2012, 2014, 2016, and 2018 ASHA Schools Surveys. $n = 103$ (2006); $n = 108$ (2008); $n = 108$ (2010); $n = 114$ (2012); $n = 68$ (2014); $n = 93$ (2016); $n = 97$ (2018).

Hourly Wages

In 2018, SLPs reported an overall median hourly wage of \$51.00—about the same as in recent past years (see Table 3). They worked a median of 21 hours per week—the same as in 2016 but down from 24 hours in 2010, 22 hours in 2012, and 23 hours in 2014). (These data are not shown in any figure or table.)

Hourly Wages, by School Setting

From 2010 to 2018, the median hourly wage of SLPs typically varied by school setting (see Table 3).

Table 3. Median hourly wages of SLPs, by school setting and year.

School Setting	\$				
	2010 (n = 248)	2012 (n = 280)	2014 (n = 165)	2016 (n = 212)	2018 (n = 275)
Overall ^a	50.00	50.00	53.76	49.50	51.00
Special day or residential school	n/r	n/r	n/r	n/r	n/r
Preschool	51.50	54.74	48.00	n/r	56.28
Elementary school	50.00	50.00	55.00	52.00	50.00
Secondary school	n/r	50.00	46.81	n/r	50.00
Combination of schools	50.00	50.07	n/r	45.00	52.65

Note. These data are from the 2010, 2012, 2014, 2016, and 2018 ASHA Schools Surveys. n/r = not reported (to preserve confidentiality and provide more certain results, we do not report data for groups of fewer than 25).

^aIncludes SLPs who did not indicate a school setting. Analysis included employees and contractors.

Hourly Wages, by Geographic Region

The median hourly wage of SLPs typically varied by geographic region of the country. From 2012 to 2018, wages were usually highest in the Northeast and lowest in the Midwest (see Table 4).

Table 4. Median hourly wages of school-based SLPs, by geographic region and year.

Geographic region	\$			
	2012 (n = 292)	2014 (n = 216)	2016 (n = 208)	2018 (n = 265)
Northeast	59.95	57.03	59.46	64.00
Midwest	48.00	44.76	40.00	45.00
South	50.00	50.00	49.00	50.00
West	50.00	60.00	52.96	51.00

Note. These data are from the 2012, 2014, 2016, and 2018 ASHA Schools Surveys. Analysis included employees and contractors.

Hourly Wages of Contractors

From 2010 to 2018, most SLPs who were paid an hourly wage were contractors. In 2018, they reported an overall median hourly wage of \$52.00—about the same as in recent past years (see Table 5).

Hourly Wages of Contractors, by School Setting

The median hourly wage of contractors typically varied by school setting. From 2010 to 2018, contractors in preschools usually reported the highest wages (see Table 5).

Table 5. Median hourly wages of contract SLPs, by school setting and year.

School Setting	\$				
	2010 (n = 191)	2012 (n = 243)	2014 (n = 161)	2016 (n = 186)	2018 (n = 231)
Overall ^a	50.00	52.55	55.00	49.76	52.00
Special day or residential school	n/r	n/r	n/r	n/r	n/r
Preschool	58.59	60.00	60.00	n/r	58.59
Elementary school	50.00	50.50	55.00	52.00	51.00
Secondary school	n/r	50.00	47.54	n/r	n/r
Combination of schools	n/r	52.14	n/r	n/r	53.46

Note. These data are from the 2010, 2012, 2014, 2016, and 2018 ASHA Schools Surveys. n/r = not reported (to preserve confidentiality and provide more certain results, we do not report data for groups of fewer than 25).

^aIncludes contract SLPs who did not indicate a school setting.

Hourly Wages of Contractors, by Geographic Region

The median hourly wage of contractors varied by geographic region of the country. From 2012 to 2018, wages were typically highest in the Northeast and lowest in the Midwest (see Table 6).

Table 6. Median hourly wages of contract SLPs, by geographic region and year.

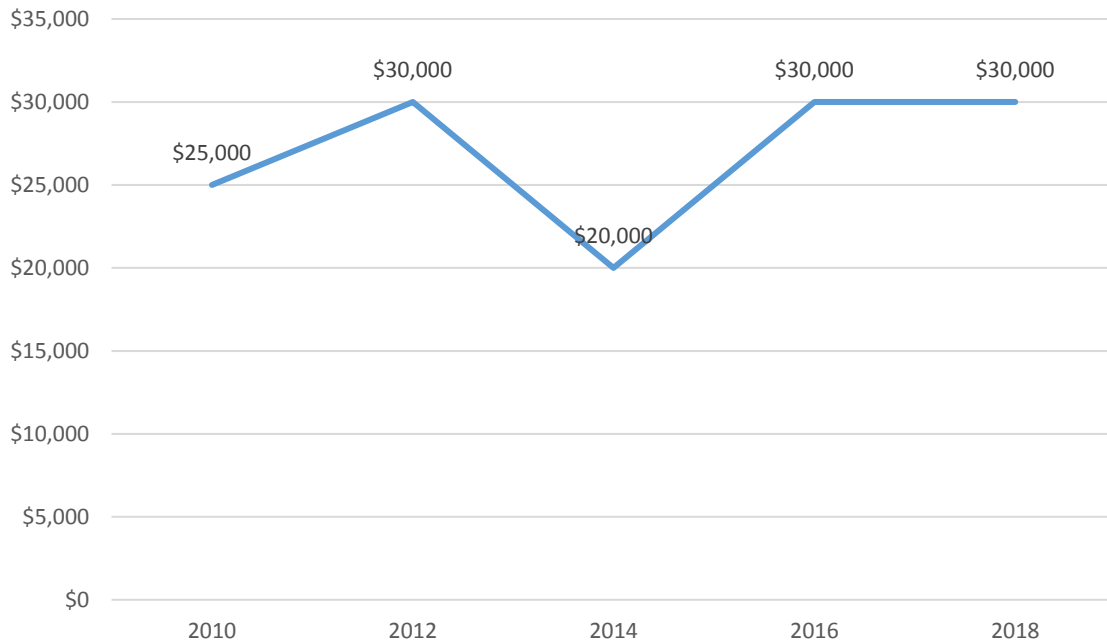
Geographic region	\$			
	2012 (n = 236)	2014 (n = 141)	2016 (n = 186)	2018 (n = 231)
Northeast	63.93	63.00	60.00	65.00
Midwest	49.46	n/r	40.00	46.41
South	51.27	50.00	49.00	50.00
West	51.00	60.00	50.00	50.03

Note. These data are from the 2012, 2014, 2016, and 2018 ASHA Schools Surveys. n/r = not reported (to preserve confidentiality and provide more certain results, we do not report data for groups of fewer than 25).

Unpaid Student Debt

In 2018, 27% of SLPs reported having unpaid student debt—the same or about the same as in recent past years (26% in 2012 and 27% in 2014 and 2016). (These data are not shown in any figure or table). The median amount owed was \$30,000, compared with \$20,000–\$30,000 from 2010 to 2016 (see Figure 4).

Figure 4. Median amount of unpaid student debt owed by school-based SLPs, by year.



Note. These data are from the 2010, 2012, 2014, 2016, and 2018 ASHA Schools Surveys. $n = 584$ (2010); $n = 646$ (2012); $n = 450$ (2014); $n = 509$ (2016); $n = 595$ (2018). There is not enough evidence from the data to say that the responses vary by school type.

Survey Methodology

The survey was mailed in February 2018 to a random sample of 4,500 ASHA-certified SLPs and 500 ASHA-certified audiologists employed in school settings in the United States. The sample was stratified by state. Small groups, such as SLPs and audiologists in Wyoming, were oversampled. A survey notification email was sent at the time of the mailing. Second and third mailings followed, at approximately 3- or 4-week intervals, to individuals who had not responded to earlier mailings.

Response Rates

Of the original 4,500 SLPs in the sample plus four other SLPs who returned surveys without any identifying number, six had incorrect mailing addresses, nine had retired, 29 were employed in other types of facilities, six were not employed in the profession, and four were ineligible for other reasons, which left 4,450 possible respondents. The actual number of respondents was 2,170—a 48.8% response rate.

Past *ASHA Schools Survey* response rates were as follows:

- 2004: 69.7%
- 2006: 64.9%
- 2008: 64.0%
- 2010: 64.8% (overall); 65.5% (among SLPs)
- 2012: 63.6% (overall); 64.7% (among SLPs)
- 2014: 46.0% (overall); 47.0% (among SLPs)
- 2016: 47.4% (overall); 47.9% (among SLPs)

Suggested Citation

American Speech-Language-Hearing Association. (2018). *Schools survey report: SLP annual salary and hourly wage trends, 2004–2018*. Available from www.asha.org.

Additional Information

Companion reports are available on the ASHA website at www.asha.org/research/memberdata/schoolssurvey/.

Questions?

For additional information regarding this report or school services generally, please contact Jaumeiko Coleman, director of school services, at jcoleman@asha.org.

Acknowledgment

Without the generous cooperation of the members who participate in our surveys, ASHA could not fulfill its mission to provide vital information about the professions and discipline to the Association membership and public. Thank you!

Appendix

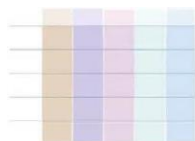


Table 1. Median academic year salaries of SLPs, by school setting and year.

School setting	\$							
	2004 (n = 1,987)	2006 (n = 1,669)	2008 (n = 1,636)	2010 (n = 1,574)	2012 (n = 1,593)	2014 (n = 1,016)	2016 (n = 1,244)	2018 (n = 1,411)
Overall ^a	50,000	52,131	58,000	58,000	60,000	61,000	62,000	63,338
Special day or residential school	46,000	60,128	64,932	59,819	<i>n/r</i>	71,339	67,781	66,201
Preschool	48,500	53,290	57,008	60,000	56,825	60,000	59,539	62,000
Elementary school	50,000	52,000	57,000	58,000	59,000	60,000	60,000	62,715
Secondary school	53,000	54,750	60,840	61,786	63,749	67,000	70,347	68,000
Combination of schools	48,500	51,537	58,000	56,000	57,951	60,000	63,586	64,495
Other	56,000	62,500	—	—	—	—	—	—

Note. These data are from the 2004, 2006, 2008, 2010, 2012, 2014, 2016, and 2018 *ASHA Schools Surveys*. *n/r* = not reported (to preserve confidentiality and provide more certain results, we do not report data for groups of fewer than 25). Dash indicates that the item was not included in the survey analysis. ^aIncludes SLPs who did not indicate a school setting.

Table 2. Median academic year salaries of SLPs who held the position of clinical service provider, by school setting and year.

School setting	\$							
	2004 (n = 1,777)	2006 (n = 1,526)	2008 (n = 1,496)	2010 (n = 1,445)	2012 (n = 1,499)	2014 (n = 1,016)	2016 (n = 1,118)	2018 (n = 1,284)
Overall ^a	49,800	52,000	57,800	58,000	59,717	60,927	62,000	63,551
Special day or residential school	46,000	60,000	64,204	55,934	<i>n/r</i>	71,339	66,817	65,671
Preschool	47,801	52,721	57,000	58,592	56,197	60,000	60,000	62,000
Elementary school	49,500	52,000	57,000	58,000	59,000	60,000	60,000	63,000
Secondary school	52,582	55,000	61,328	61,000	63,837	67,000	71,000	68,000
Combination of schools	48,000	51,000	58,000	56,000	56,530	60,000	61,757	65,000

Note. These data are from the 2004, 2006, 2008, 2010, 2012, 2014, 2016, and 2018 ASHA Schools Surveys. *n/r* = not reported (to preserve confidentiality and provide more certain results, we do not report data for groups of fewer than 25). ^aIncludes SLPs who did not indicate a school setting.

Table 3. Median academic year salaries of school-based SLPs, by years of experience in the profession and year.

Years of experience in the profession	\$							
	2004 (n = 1,985)	2006 (n = 1,668)	2008 (n = 1,633)	2010 (n = 1,501)	2012 (n = 1,533)	2014 (n = 1,082)	2016 (n = 1,215)	2018 (n = 1,370)
1–3	38,669	40,041	n/r	45,200	47,000	n/r	53,328	49,000
4–6	39,500	43,000	46,254	49,000	51,000	51,000	51,920	52,000
7–9	42,500	44,000	49,000	52,000	54,000	54,863	55,168	58,567
10–12	45,000	46,000	52,000	53,000	52,000	55,000	58,000	62,000
13–15	48,250	50,000	55,000	58,000	60,000	58,878	62,709	64,967
16–18	52,250	53,000	57,138	59,970	60,000	60,000	60,000	65,000
19–21	50,100	58,000	61,060	62,982	64,184	61,994	66,310	68,000
22–24	55,800	60,000	63,000	64,226	68,025	62,936	68,485	67,000
25–27	57,000	60,000	62,977	65,000	65,000	69,753	72,000	70,000
28 or more	60,000	64,900	65,000	70,000	69,692	73,000	72,000	77,141

Note. These data are from the 2004, 2006, 2008, 2010, 2012, 2014, 2016, and 2018 ASHA Schools Surveys. n/r = not reported (to preserve confidentiality and provide more certain results, we do not report data for groups of fewer than 25).

Table 4a. Median academic year salaries of school-based SLPs, by geographic region/division and year.

Geographic region/ division	\$							
	2004 (n = 1,978)	2006 (n = 1,660)	2008 (n = 1,635)	2010 (n = 1,574)	2012 (n = 1,592)	2014 (n = 1,133)	2016 (n = 1,244)	2018 (n = 1,411)
Northeast	58,000	62,000	66,000	70,000	68,000	72,000	72,004	73,750
New England	54,000	60,000	63,844	67,000	70,000	71,000	74,939	74,000
Mid-Atlantic	61,000	65,000	70,000	70,000	66,478	73,000	70,000	73,187
Midwest	48,250	51,225	57,000	56,000	60,000	61,000	59,000	63,000
East North Central	51,000	55,000	60,000	59,521	61,427	65,000	59,499	64,500
West North Central	44,000	47,000	51,000	52,948	53,791	55,000	58,505	57,915
South	43,583	45,000	52,000	51,500	52,000	53,000	55,759	56,000
South Atlantic	47,000	48,000	55,000	53,000	54,000	53,710	55,000	58,000
East South Central	41,000	43,180	49,605	49,000	48,938	50,000	51,000	54,000
West South Central	41,494	43,000	50,000	51,426	52,846	53,000	59,000	55,000
West	52,894	58,000	62,000	65,000	65,000	67,088	70,000	71,168
Mountain	48,000	50,000	55,207	58,000	57,767	55,000	59,000	63,000
Pacific	60,000	64,802	68,437	70,000	70,000	71,009	78,000	80,000

Note. These data are from the 2004, 2006, 2008, 2010, 2012, 2014, 2016, and 2018 ASHA Schools Surveys.

Table 4b. Key of geographic regions/divisions and corresponding states.

Geographic region/division	Corresponding states
Northeast	
New England	CT, ME, MA, NH, RI, VT
Mid-Atlantic	NJ, NY, PA
Midwest	
East North Central	IL, IN, MI, OH, WI
West North Central	IA, KS, MN, MO, NE, ND, SD
South	
South Atlantic	DE, DC, FL, GA, MD, NC, SC, VA, WV
East South Central	AL, KY, MS, TN
West South Central	AR, LA, OK, TX
West	
Mountain	AZ, CO, ID, MT, NV, NM, UT, WY
Pacific	AK, CA, HI, OR, WA

Table 5. Median academic year salaries of school-based SLPs, by type of community and year.

Type of community	\$							
	2004 (n = 1,977)	2006 (n = 1,655)	2008 (n = 1,622)	2010 (n = 1,553)	2012 (n = 1,574)	2014 (n = 1,114)	2016 (n = 1,230)	2018 (n = 1,394)
Rural	43,000	47,000	52,000	51,000	54,000	54,077	54,201	56,000
Suburban	51,600	56,000	60,000	62,000	61,000	65,000	65,000	64,891
City/urban ^a	52,000	54,999	60,000	61,000	61,500	61,410	63,000	67,087

Note. These data are from the 2004, 2006, 2008, 2010, 2012, 2014, 2016, and 2018 ASHA Schools Surveys. Definitions of rural, suburban, and city/urban were not provided in the survey. ^aFrom 2004 to 2012, this item was titled “Metropolitan/urban.”

Table 6. Median calendar year salaries of SLPs, by school setting and year.

School setting	\$							
	2004 (n = 197)	2006 (n = 158)	2008 (n = 156)	2010 (n = 155)	2012 (n = 173)	2014 (n = 98)	2016 (n = 131)	2018 (n = 160)
Overall ^a	54,000	57,000	65,000	65,000	70,000	72,107	70,154	72,000
Special day or residential school	n/r	56,860	n/r	n/r	63,000	n/r	75,000	71,000
Preschool	50,500	50,000	59,972	56,737	71,298	n/r	60,348	67,569
Elementary school	54,750	64,000	60,000	65,118	60,000	71,000	60,000	80,000
Secondary school	n/r	n/r	n/r	n/r	n/r	n/r	n/r	n/r
Combination of schools	61,000	59,202	62,506	n/r	n/r	n/r	n/r	n/r
Other	62,000	n/r	—	—	—	—	—	—

Note. These data are from the 2004, 2006, 2008, 2010, 2012, 2014, 2016, and 2018 ASHA Schools Surveys. *n/r* = not reported (to preserve confidentiality and provide more certain results, we do not report data for groups of fewer than 25). Dash indicates that the item was not included in the survey analysis. ^aIncludes SLPs who did not indicate a school setting.