



AMERICAN  
SPEECH-LANGUAGE-  
HEARING  
ASSOCIATION

# SLP Health Care SURVEY 2017

## Survey Summary Report: Number and Type of Responses

For additional information, please contact:

Jeanette Janota, Surveys & Analysis  
American Speech-Language-Hearing Association  
2200 Research Boulevard  
Rockville, MD 20850-3289  
800-498-2071, ext. 8738  
[jjanota@asha.org](mailto:jjanota@asha.org)

### **Suggested Citation:**

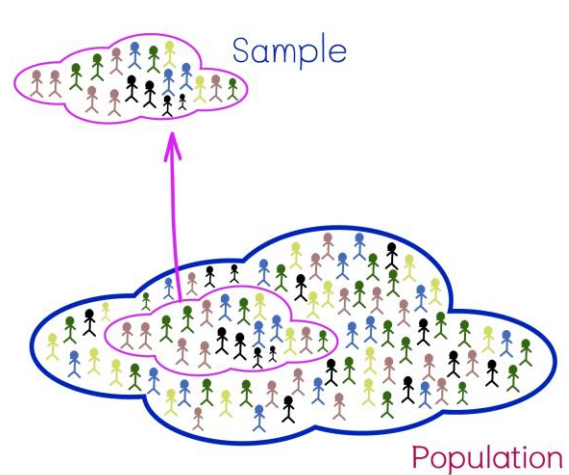
American Speech-Language-Hearing Association. (2017). *2017 SLP health care survey summary report: Number and type of responses*. Available from [www.asha.org](http://www.asha.org).

## Contents

Sampling and Response Rates .....	1
ASHA Services and Programs: Q. 1.....	2
Workplace: Qs. 2–6.....	3
Employment: Qs. 7–11 .....	9
Employment and Earnings: Qs. 12–19.....	16
Professional Services: Qs. 20–23 .....	25
Productivity: Qs. 24–29 .....	38
Cultural and Linguistic Diversity: Qs. 30–32.....	45
Demographics: Qs. 33–41.....	51
Appendix .....	60

## Sampling and Response Rates

ASHA used probability (nonreplacement) sampling via a stratified systematic technique to select a sample of 4,000 ASHA-certified speech-language pathologists (SLPs) for the *2017 Health Care Survey*. The sample was stratified by facility type and private practice, and data have been weighted to reflect their proportion by facility and private practice in the Association. Small groups, such as SLPs who work in pediatric hospitals, were oversampled in order to include sufficient numbers from these groups in the sample.



A response rate of 52.1% was obtained (2,019 completed surveys from a net sample of 3,872 SLPs who were eligible). This percentage is unweighted.

Data were weighted for all tables in the report. The “All Facility Types” column throughout the report reflects results for respondents from the six facility types as well as from the 10 respondents who were employed in “other” types of facilities and respondents who did not answer the question about facility type. Therefore, the “All Facility Types” column may not be the sum of the *ns* in the other six columns. Data are not presented for table cells with fewer than 25 respondents, and administrative offices were excluded for questions where responses were limited to clinical service providers.

A description of statistical terms used in the report is located at the end of the report.

## ASHA Services and Programs

1. In your opinion, what kind of job is the Association doing in serving its speech-language pathology members who work in health care? (Percentages)

Analyses limited to respondents who met the following criterion:

❖ CCC-SLP

Response	Facility Type						
	All Facility Types (n = 1,969)	General Medical/VA/ LTAC Hospital (n = 275)	Home Health/ Client's Home (n = 336)	Outpatient Clinic/Office (n = 531)	Pediatric Hospital (n = 79)	Rehab Hospital (n = 128)	Skilled Nursing Facility (n = 450)
Poor	4.9	4.7	3.3	2.8	3.8	3.9	8.2
Fair	28.9	45.5	25.6	25.4	22.8	30.5	26.9
Good	55.6	42.9	59.8	61.2	67.1	60.2	50.7
Excellent	10.6	6.9	11.3	10.5	6.3	5.5	14.2
		Statistical significance: $\chi^2(15) = 79.0, p = .000$ , Cramer's $V = .121$ <u>Conclusion:</u> There is adequate evidence from the data to say that the responses vary by facility type.					



## Workplace

2. Do you currently have funded, unfilled positions for SLPs at your facility? (Percentages) Analyses limited to respondents who met the following criterion: ❖ CCC-SLP							
Positions	Facility Type						
	All Facility Types	General Medical/VA/LTAC Hospital	Home Health/Client's Home	Outpatient Clinic/Office	Pediatric Hospital	Rehab Hospital	Skilled Nursing Facility
	<i>n</i> = 1,997	<i>n</i> = 283	<i>n</i> = 345	<i>n</i> = 535	<i>n</i> = 78	<i>n</i> = 130	<i>n</i> = 458
Yes	24.6	26.1	30.7	23.6	33.3	27.7	22.3
No	71.5	73.9	68.7	76.4	66.7	72.3	77.7
Not currently employed (SKIP to Q. 33.)	3.8	0.0	0.6	0.0	0.0	0.0	0.0
		Too many cells (33%) have an expected count of fewer than 5. <u>Conclusion</u> : Too little data are available in some facility categories to test whether responses vary by facility type.					
<b>Recoded, deleting "Not currently employed" response</b>							
	<i>n</i> = 1,921	<i>n</i> = 283	<i>n</i> = 343	<i>n</i> = 535	<i>n</i> = 78	<i>n</i> = 130	<i>n</i> = 458
Yes	25.6	26.1	30.9	23.6	33.3	27.7	22.3
No	74.4	73.9	69.1	76.4	66.7	72.3	77.7
		Statistical significance: $\chi^2(5) = 11.7$ , <b><i>p</i> = .040</b> , Cramer's <i>V</i> = .080 <u>Conclusion</u> : There is adequate evidence from the data to say that the responses vary by facility type.					

3. Based on your own observations and experiences, rate the current job market for SLPs in your type of employment facility and in your geographic area. (Percentages)

Analyses limited to respondents who met the following criteria:

- ❖ CCC-SLP
- ❖ Employed full time or part time

Observations	Facility Type						
	All Facility Types (n = 1,864)	General Medical/VA/ LTAC Hospital (n = 276)	Home Health/ Client's Home (n = 338)	Outpatient Clinic/Office (n = 524)	Pediatric Hospital (n = 78)	Rehab Hospital (n = 128)	Skilled Nursing Facility (n = 457)
More job openings than job seekers	35.1	21.4	50.6	37.2	15.4	18.0	38.3
Job openings and job seekers in balance	34.1	30.1	35.2	36.8	42.3	38.3	30.2
Fewer job openings than job seekers	30.8	48.6	14.2	26.0	42.3	43.8	31.5
	Statistical significance: $\chi^2(10) = 139.1, p = .000$ , Cramer's $V = .197$ <u>Conclusion:</u> There is adequate evidence from the data to say that the responses vary by facility type.						



4. In the past 12 months, have you felt pressured by an employer or supervisor to engage in any of the following activities? *Select all that apply.* (Percentages; order of responses was changed from alphabetic to descending order of frequencies.)

Analyses limited to respondents who met the following criteria:

- ❖ CCC-SLP
- ❖ Employed full time or part time
- ❖ Primarily clinical service provider

Pressure	Facility Type						
	All Facility Types (n = 1,643)	General Medical/VA/ LTAC Hospital (n ≥ 258)	Home Health/ Client's Home (n = 316)	Outpatient Clinic/Office (n ≥ 450)	Pediatric Hospital (n ≥ 67)	Rehab Hospital (n ≥ 114)	Skilled Nursing Facility (n ≥ 394)
Provide inappropriate frequency or intensity of services	16.0	15.1	9.8	7.1	11.8	16.7	31.9
	Statistical significance: $\chi^2(5) = 111.3$ , $p = .000$ , Cramer's $V = .264$ <u>Conclusion:</u> There is adequate evidence from the data to say that the responses vary by facility type.						
Discharge inappropriately (e.g., early or delayed)	15.0	6.2	8.2	6.4	7.4	14.9	36.5
	Statistical significance: $\chi^2(5) = 201.8$ , $p = .000$ , Cramer's $V = .355$ <u>Conclusion:</u> There is adequate evidence from the data to say that the responses vary by facility type.						
Provide evaluation and treatment that are not clinically appropriate	11.2	14.3	5.7	3.8	4.4	12.3	22.5
	Statistical significance: $\chi^2(5) = 91.9$ , $p = .000$ , Cramer's $V = .240$ <u>Conclusion:</u> There is adequate evidence from the data to say that the responses vary by facility type.						
	(Question 4 continues on next page.)						

4. (cont'd) In the past 12 months, have you felt pressured by an employer or supervisor to engage in any of the following activities? *Select all that apply.* (Percentages; order of responses was changed from alphabetic to descending order of frequencies.)

Analyses limited to respondents who met the following criteria:

- ❖ CCC-SLP
- ❖ Employed full time or part time
- ❖ Primarily clinical service provider

Pressure	Facility Type						
	All Facility Types (n = 1,643)	General Medical/VA/ LTAC Hospital (n ≥ 258)	Home Health/ Client's Home (n = 316)	Outpatient Clinic/Office (n ≥ 450)	Pediatric Hospital (n ≥ 67)	Rehab Hospital (n ≥ 114)	Skilled Nursing Facility (n ≥ 394)
Provide services for which you had inadequate training and/or experience	7.4	5.8	9.5	8.4	7.4	6.1	6.3
	Statistical significance: $\chi^2(5) = 4.5, p = .478$ <u>Conclusion:</u> There is not enough evidence from the data to say that the responses vary by facility type.						
Alter documentation for reimbursement	5.9	6.6	3.8	4.0	1.5	3.5	9.9
	Statistical significance: $\chi^2(5) = 21.1, p = .001$ , Cramer's $V = .115$ <u>Conclusion:</u> There is adequate evidence from the data to say that the responses vary by facility type.						
Did not feel pressured	68.6	74.9	75.6	78.9	76.5	70.4	46.6
	Statistical significance: $\chi^2(5) = 125.8, p = .000$ , Cramer's $V = .280$ <u>Conclusion:</u> There is adequate evidence from the data to say that the responses vary by facility type.						



**ASHA 2017 SLP Health Care Survey: Survey Summary Report**

5. For what purpose do you use electronic medical records (EMR) in your primary place of employment? *Select all that apply.* (Percentages; order of responses was changed from alphabetic to descending order of frequencies.)

Analyses limited to respondents who met the following criteria:

- ❖ CCC-SLP
- ❖ Employed full time or part time

Pressure	Facility Type						
	All Facility Types (n = 1,896)	General Medical/VA/ LTAC Hospital (n ≥ 281)	Home Health/ Client's Home (n ≥ 347)	Outpatient Clinic/Office (n = 534)	Pediatric Hospital (n ≥ 78)	Rehab Hospital (n ≥ 129)	Skilled Nursing Facility (n = 459)
Clinical documentation	80.4	95.4	64.4	68.0	94.9	89.2	93.9
	Statistical significance: $\chi^2(5) = 221.0$ , $p = .000$ , Cramer's $V = .348$ <u>Conclusion:</u> There is adequate evidence from the data to say that the responses vary by facility type.						
Billing	71.9	82.9	49.6	67.0	89.9	82.9	83.0
	Statistical significance: $\chi^2(5) = 158.4$ , $p = .000$ , Cramer's $V = .294$ <u>Conclusion:</u> There is adequate evidence from the data to say that the responses vary by facility type.						
Scheduling	57.2	55.0	42.7	62.5	85.9	52.7	60.6
	Statistical significance: $\chi^2(5) = 66.3$ , $p = .000$ , Cramer's $V = .190$ <u>Conclusion:</u> There is adequate evidence from the data to say that the responses vary by facility type.						
Do not use EMR (SKIP to Q. 7.)	13.8	2.5	27.4	21.7	3.8	6.2	4.6
	Statistical significance: $\chi^2(5) = 159.1$ , $p = .000$ , Cramer's $V = .295$ <u>Conclusion:</u> There is adequate evidence from the data to say that the responses vary by facility type.						

6. Overall, how does using an EMR impact your clinical or administrative work? (Percentages)

Analyses limited to respondents who met the following criteria:

- ❖ CCC-SLP
- ❖ Employed full time or part time

EMR Impact	Facility Type						
	All Facility Types (n = 1,614)	General Medical/VA/ LTAC Hospital (n = 270)	Home Health/ Client's Home (n = 250)	Outpatient Clinic/Office (n = 415)	Pediatric Hospital (n = 75)	Rehab Hospital (n = 120)	Skilled Nursing Facility (n = 436)
Very positively	37.2	41.5	38.4	40.0	49.3	36.7	30.3
Somewhat positively	37.9	36.7	33.6	36.6	38.7	40.0	41.7
Neither positively nor negatively	13.1	10.0	13.2	13.5	5.3	12.5	15.1
Somewhat negatively	10.8	10.7	12.8	8.9	5.3	10.8	12.2
Very negatively	1.0	1.1	2.0	1.0	1.3	0.0	0.7
	Too many cells (20%) have an expected count of fewer than 5. <u>Conclusion:</u> Too little data are available in some facility categories to test whether responses vary by facility type.						

## Employment

7. Which one of the following categories best describes your employment status? (Percentages)

Analyses limited to respondents who met the following criterion:

❖ CCC-SLP

Status	Facility Type						
	All Facility Types (n = 1,896)	General Medical/VA/ LTAC Hospital (n = 281)	Home Health/ Client's Home (n = 347)	Outpatient Clinic/Office (n = 534)	Pediatric Hospital (n = 79)	Rehab Hospital (n = 130)	Skilled Nursing Facility (n = 460)
Employed full time	66.0	63.0	55.3	66.7	74.7	61.5	75.2
Employed part time	34.0	37.0	44.7	33.3	25.3	38.5	24.8
		Statistical significance: $\chi^2(5) = 40.1$ , $p = .000$ , Cramer's $V = .148$ <u>Conclusion:</u> There is adequate evidence from the data to say that the responses vary by facility type.					



8. In a typical month, for how many employers do you work as a clinical service provider?

Analyses limited to respondents who met the following criteria:

- ❖ CCC-SLP
- ❖ Employed full time or part time
- ❖ Clinical service provider

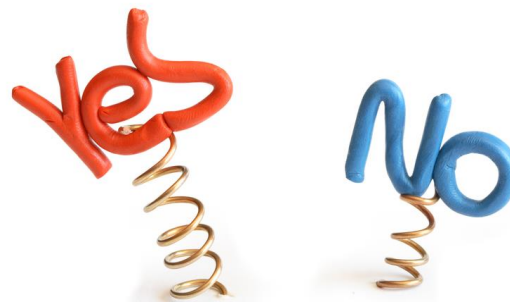
Employers	Facility Type						
	All Facility Types (n = 1,565)	General Medical/VA/ LTAC Hospital (n = 254)	Home Health/ Client's Home (n = 302)	Outpatient Clinic/Office (n = 415)	Pediatric Hospital (n = 63)	Rehab Hospital (n = 109)	Skilled Nursing Facility (n = 383)
25th percentile	1.0	1.0	1.0	1.0	1.0	1.0	1.0
50th percentile (Median)	1.0	1.0	1.0	1.0	1.0	1.0	1.0
75th percentile	2.0	2.0	2.0	2.0	1.0	2.0	2.0
Mean	1.6	1.5	1.6	1.7	2.3	1.4	1.7
Standard deviation	3.2	2.6	1.3	4.6	8.9	1.0	0.9
Mode	1.0	1.0	1.0	1.0	1.0	1.0	1.0
		Statistical significance: $F(5, 1520) = 0.7, p = .620$ <u>Conclusion:</u> There is not enough evidence from the data to say that the responses vary by facility type.					

9. Do you currently provide early intervention (EI) services? (Percentages)

Analyses limited to respondents who met the following criteria:

- ❖ CCC-SLP
- ❖ Clinical service provider
- ❖ Employed full time or part time

EI Services	Facility Type						
	All Facility Types (n = 1,639)	General Medical/VA/ LTAC Hospital (n = 258)	Home Health/ Client's Home (n = 313)	Outpatient Clinic/Office (n = 450)	Pediatric Hospital (n = 68)	Rehab Hospital (n = 114)	Skilled Nursing Facility (n = 392)
Yes	29.7	7.8	56.9	51.1	39.7	8.8	3.1
No (SKIP to Q. 11.)	70.3	92.2	43.1	48.9	60.3	91.2	96.9
		Statistical significance: $\chi^2(5) = 427.7, p = .000$ , Cramer's $V = .518$ <u>Conclusion:</u> There is adequate evidence from the data to say that the responses vary by facility type.					



10. Select up to three (3) of the top issues that affect your work in EI. (Percentages; order of responses was changed from alphabetic to descending order of frequencies.)

Analyses limited to respondents who met the following criteria:

- ❖ CCC-SLP
- ❖ Employed full time or part time
- ❖ Primarily clinical service provider
- ❖ Answered “yes” to Q. 9

Issue	Facility Type						
	All Facility Types (n = 470)	General Medical/VA/ LTAC Hospital (n = 19)	Home Health/ Client's Home (n = 172)	Outpatient Clinic/Office (n = 223)	Pediatric Hospital (n ≥ 25)	Rehab Hospital (n ≥ 9)	Skilled Nursing Facility (n ≥ 11)
Inadequate reimbursement or funding for services	52.7	(n < 25)	56.4	52.0	44.0	(n < 25)	(n < 25)
	Statistical significance: $\chi^2(5) = 3.2, p = .668$ <u>Conclusion:</u> There is not enough evidence from the data to say that the responses vary by facility type.						
Changing eligibility criteria that exclude children who need services	46.5	(n < 25)	47.7	46.6	46.2	(n < 25)	(n < 25)
	Statistical significance: $\chi^2(5) = 2.7, p = .745$ <u>Conclusion:</u> There is not enough evidence from the data to say that the responses vary by facility type.						
Lack of qualified providers to deliver services	32.8	(n < 25)	34.9	30.0	34.6	(n < 25)	(n < 25)
	Statistical significance: $\chi^2(5) = 1.4, p = .919$ <u>Conclusion:</u> There is not enough evidence from the data to say that the responses vary by facility type.						
(Question 10 continues on next page.)							

10. (cont'd) Select up to three (3) of the top issues that affect your work in EI. (Percentages; order of responses was changed from alphabetic to descending order of frequencies.)

Analyses limited to respondents who met the following criteria:

- ❖ CCC-SLP
- ❖ Employed full time or part time
- ❖ Primarily clinical service provider
- ❖ Answered “yes” to Q. 9

Issue	Facility Type						
	All Facility Types (n = 470)	General Medical/VA/ LTAC Hospital (n = 19)	Home Health/ Client's Home (n = 172)	Outpatient Clinic/Office (n = 223)	Pediatric Hospital (n ≥ 25)	Rehab Hospital (n ≥ 9)	Skilled Nursing Facility (n ≥ 11)
Other professionals taking primary role in communication or swallowing services	26.3	(n < 25)	24.4	28.3	23.1	(n < 25)	(n < 25)
	Too many cells (25%) have an expected count of fewer than 5. <u>Conclusion:</u> Too little data are available in some facility categories to test whether responses vary by facility type.						
Lack of sufficient training or professional development for SLPs in EI	15.8	(n < 25)	20.9	13.0	15.4	(n < 25)	(n < 25)
	Too many cells (33%) have an expected count of fewer than 5. <u>Conclusion:</u> Too little data are available in some facility categories to test whether responses vary by facility type.						
Serving as primary provider in areas outside my scope	9.4	(n < 25)	12.8	7.2	11.5	(n < 25)	(n < 25)
	Too many cells (33%) have an expected count of fewer than 5. <u>Conclusion:</u> Too little data are available in some facility categories to test whether responses vary by facility type.						
(Question 10 continues on next page.)							

10. (cont'd) Select up to three (3) of the top issues that affect your work in EI. (Percentages; order of responses was changed from alphabetic to descending order of frequencies.)

Analyses limited to respondents who met the following criteria:

- ❖ CCC-SLP
- ❖ Employed full time or part time
- ❖ Primarily clinical service provider
- ❖ Answered “yes” to Q. 9

Issue	Facility Type						
	All Facility Types (n = 470)	General Medical/VA/ LTAC Hospital (n = 19)	Home Health/ Client's Home (n = 172)	Outpatient Clinic/Office (n = 223)	Pediatric Hospital (n ≥ 25)	Rehab Hospital (n ≥ 9)	Skilled Nursing Facility (n ≥ 11)
None of the above	14.7	(n < 25)	11.6	16.1	16.0	(n < 25)	(n < 25)
		Too many cells (33%) have an expected count of fewer than 5. <u>Conclusion:</u> Too little data are available in some facility categories to test whether responses vary by facility type.					





11. Do you currently own, co-own, or work in a private practice? (Percentages)

Analyses limited to respondents who met the following criterion:

❖ CCC-SLP

Private Practice	Facility Type						
	All Facility Types (n = 1,890)	General Medical/VA/ LTAC Hospital (n = 280)	Home Health/ Client's Home (n = 349)	Outpatient Clinic/Office (n = 531)	Pediatric Hospital (n = 79)	Rehab Hospital (n = 130)	Skilled Nursing Facility (n = 458)
Yes, full time	13.3	1.1	15.8	34.1	0.0	0.0	0.9
Yes, part time	12.6	2.5	17.2	26.2	5.1	5.4	3.3
No	74.0	96.4	67.0	39.7	94.9	94.6	95.9
		Statistical significance: $\chi^2(10) = 579.4$ , $p = .000$ , Cramer's $V = .398$ <u>Conclusion:</u> There is adequate evidence from the data to say that the responses vary by facility type.					



## Employment and Earnings

12. Select the one facility type that best describes where you work most of the time. For individuals who work in El or private practice, select the type of building in which you deliver most of your services. Multiple responses will be excluded from analyses. (Percentages)

Analyses limited to respondents who met the following criteria:

- ❖ CCC-SLP
- ❖ Employed full time or part time

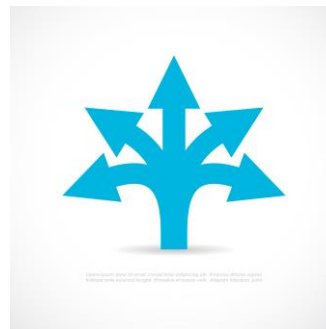
Facility Type	Unweighted (n = 1,829)	Weighted (n = 1,840)
General medical, Veterans Affairs (VA), or long-term acute care (LTAC) hospital	15.9	15.3
Home health agency or client's home	19.6	18.9
Outpatient clinic or office	25.4	29.0
Pediatric hospital	8.4	4.3
Rehabilitation hospital	8.7	7.0
Skilled nursing facility (SNF)	21.4	25.0
Other, specify:	0.5	0.6

13. How many locations do you work in during a typical week for your primary employer? *Do not include sites on the same campus or multiple employers. Select only one response.* (Percentages)

Analyses limited to respondents who met the following criteria:

- ❖ CCC-SLP
- ❖ Employed full time or part time

Locations	Facility Type						
	All Facility Types (n = 1,878)	General Medical/VA/ LTAC Hospital (n = 282)	Home Health/ Client's Home (n = 347)	Outpatient Clinic/Office (n = 530)	Pediatric Hospital (n = 78)	Rehab Hospital (n = 130)	Skilled Nursing Facility (n = 459)
I work in 1 location.	57.0	76.6	5.5	59.8	78.2	80.0	72.3
I work in 2 locations.	15.4	16.7	5.8	18.7	16.7	13.8	17.2
I work in 3 locations.	5.8	4.6	3.7	8.9	2.6	2.3	5.9
I work in 4 or more locations.	4.6	1.4	6.3	5.8	1.3	1.5	3.9
I work in multiple locations through home health or EI.	17.2	0.7	78.7	6.8	1.3	2.3	0.7
		Statistical significance: $\chi^2(20) = 1205.4$ , $p = .000$ , Cramer's $V = .406$ <u>Conclusion:</u> There is adequate evidence from the data to say that the responses vary by facility type.					



14. Select the one position that best describes how you spend most of your time. *Multiple responses will be excluded from analyses.* (Percentages)

Analyses limited to respondents who met the following criteria:

- ❖ CCC-SLP
- ❖ Employed full time or part time

Function	Facility Type						
	All Facility Types	General Medical/VA/LTAC Hospital	Home Health/Client's Home	Outpatient Clinic/Office	Pediatric Hospital	Rehab Hospital	Skilled Nursing Facility
	<i>n</i> = 1,868	<i>n</i> = 281	<i>n</i> = 346	<i>n</i> = 527	<i>n</i> = 77	<i>n</i> = 128	<i>n</i> = 457
Primarily clinical service provider (e.g., SLP)	87.9	92.2	91.3	85.6	87.0	89.1	86.4
Primarily administrative or supervisory position	9.6	5.7	7.5	11.0	11.7	7.8	12.0
Other, specify:	2.5	2.1	1.2	3.4	1.3	3.1	1.5
Statistical significance: $\chi^2(10) = 19.2$ , $p = .038$ , Cramer's $V = .073$ <u>Conclusion:</u> There is adequate evidence from the data to say that the responses vary by facility type.							
<b>Recoded, deleting "Other, specify" response</b>							
	<i>n</i> = 1,822	<i>n</i> = 275	<i>n</i> = 342	<i>n</i> = 509	<i>n</i> = 76	<i>n</i> = 124	<i>n</i> = 450
Primarily clinical service provider (e.g., SLP)	90.2	94.2	92.4	88.6	88.2	91.9	87.8
Primarily administrative or supervisory position	9.8	5.8	7.6	11.4	11.8	8.1	12.2
Statistical significance: $\chi^2(5) = 12.0$ , $p = .034$ , Cramer's $V = .082$ <u>Conclusion:</u> There is adequate evidence from the data to say that the responses vary by facility type.							

15. How are you paid in your main job? (Percentages)

Analyses limited to respondents who met the following criteria:

- ❖ CCC-SLP
- ❖ Employed full time or part time

Basis	Facility Type						
	All Facility Types (n = 1,880)	General Medical/VA/LTAC Hospital (n = 281)	Home Health/Client's Home (n = 347)	Outpatient Clinic/Office (n = 530)	Pediatric Hospital (n = 78)	Rehab Hospital (n = 130)	Skilled Nursing Facility (n = 460)
Primarily annual salary	33.6	36.7	26.5	40.2	70.5	46.9	18.9
Primarily per hour (SKIP to Q. 17.)	54.9	63.3	23.9	52.5	29.5	53.1	81.1
Primarily per home visit (SKIP to Q. 19.)	11.5	0.0	49.6	7.4	0.0	0.0	0.0
		Statistical significance: $\chi^2(10) = 764.2$ , $p = .000$ , Cramer's $V = .457$ <u>Conclusion:</u> There is adequate evidence from the data to say that the responses vary by facility type.					



16. Your annual income from your job includes salary and bonuses. What is your annual income, before deductions, for your main job?

Analyses limited to respondents who met the following criteria:

- ❖ CCC-SLP
- ❖ Employed full time
- ❖ Paid primarily an annual salary
- ❖ Annual salary of at least \$1

Annual Income	Facility Type						
	All Facility Types (n = 499)	General Medical/VA/ LTAC Hospital (n = 79)	Home Health/ Client's Home (n = 71)	Outpatient Clinic/Office (n = 166)	Pediatric Hospital (n = 41)	Rehab Hospital (n = 47)	Skilled Nursing Facility (n = 79)
25th percentile	\$65,000	\$70,000	\$60,304	\$60,000	\$65,000	\$65,000	\$79,010
50th percentile (Median)	\$78,000	\$81,656	\$78,000	\$73,000	\$73,000	\$73,291	\$90,000
75th percentile	\$92,000	\$92,579	\$91,848	\$89,896	\$94,105	\$85,080	\$98,000
Mean	\$80,503	\$86,476	\$76,503	\$77,305	\$79,886	\$75,285	\$87,936
Standard deviation	\$23,774	\$24,368	\$20,378	\$26,701	\$20,248	\$17,745	\$21,141
Mode	\$80,000	\$80,000	\$60,000	\$60,000	\$65,000	\$73,000	\$90,000
		Statistical significance: $F(5, 475) = 4.1, p = .001$ <u>Conclusion:</u> There is adequate evidence from the data to say that the means vary by facility type.					

If you provide no clinical services, SKIP to Q. 33; otherwise SKIP to Q. 20.

17. If you are paid on an hourly basis, what is the hourly rate you receive at your main job? *You may include decimals.*

Analyses limited to respondents who met the following criteria:

- ❖ CCC-SLP
- ❖ Paid primarily per hour
- ❖ Hourly wage of at least \$1

Hourly rate	Facility Type						
	All Facility Types	General Medical/VA/LTAC Hospital	Home Health/Client's Home	Outpatient Clinic/Office	Pediatric Hospital	Rehab Hospital	Skilled Nursing Facility
<b>Employed Full Time</b>							
	<i>n</i> = 554	<i>n</i> = 85	<i>n</i> = 31	<i>n</i> = 137	<i>n</i> = 12	<i>n</i> = 28	<i>n</i> = 250
25th percentile	\$37.00	\$35.00	\$37.55	\$35.00	<i>(n</i> < 25)	\$35.51	\$38.00
50th percentile <b>(Median)</b>	\$41.00	\$39.39	\$45.19	\$42.91		\$40.26	\$41.00
75th percentile	\$46.00	\$44.38	\$66.80	\$51.59		\$46.43	\$44.17
Mean	\$44.44	\$40.46	\$56.40	\$49.47		\$42.04	\$41.22
Standard deviation	\$17.71	\$8.39	\$31.41	\$24.68		\$8.14	\$5.20
Mode	\$40.00	\$35.00	\$34.00	\$50.00		\$40.00	\$40.00
		Statistical significance: $F(5, 536) = 10.2, p = .000$ <u>Conclusion:</u> There is adequate evidence from the data to say that the means vary by facility type.					
(Question 17 continues on next page.)							

17. (cont'd) If you are paid on an hourly basis, what is the hourly rate you receive at your main job? *You may include decimals.*

Analyses limited to respondents who met the following criteria:

- ❖ CCC-SLP
- ❖ Paid primarily per hour
- ❖ Hourly wage of at least \$1

Hourly rate	Facility Type						
	All Facility Types	General Medical/VA/LTAC Hospital	Home Health/Client's Home	Outpatient Clinic/Office	Pediatric Hospital	Rehab Hospital	Skilled Nursing Facility
<b>Employed Part Time</b>							
	<i>n</i> = 424	<i>n</i> = 87	<i>n</i> = 46	<i>n</i> = 122	<i>n</i> = 9	<i>n</i> = 38	<i>n</i> = 109
25th percentile	\$40.00	\$38.17	\$42.10	\$40.00	<i>(n</i> < 25)	\$40.73	\$45.00
50th percentile <b>(Median)</b>	\$48.00	\$44.37	\$48.39	\$50.00		\$45.00	\$50.00
75th percentile	\$55.00	\$50.91	\$62.97	\$70.00		\$50.00	\$52.50
Mean	\$51.68	\$45.32	\$52.95	\$60.66		\$45.54	\$49.47
Standard deviation	\$19.53	\$8.86	\$16.34	\$30.08		\$7.61	\$11.14
Mode	\$50.00	\$45.00	\$42.00	\$45.00		\$50.00	\$50.00
	Statistical significance: $F(5, 405) = 8.9, p = .000$ <u>Conclusion:</u> There is adequate evidence from the data to say that the means vary by facility type.						



18. How many hours do you work per week for the hourly rate you entered in Q. 17? *You may include decimals. (Then, SKIP to Q. 20.)*

Analyses limited to respondents who met the following criteria:

- ❖ CCC-SLP
- ❖ Paid primarily per hour
- ❖ Hourly wage of at least \$1

Weekly Hours	Facility Type						
	All Facility Types (n = 968)	General Medical/VA/ LTAC Hospital (n = 170)	Home Health/ Client's Home (n = 77)	Outpatient Clinic/Office (n = 258)	Pediatric Hospital (n = 21)	Rehab Hospital (n = 65)	Skilled Nursing Facility (n = 354)
25th percentile	20.0	20.0	12.4	16.0	(n < 25)	19.2	24.0
50th percentile (Median)	30.0	30.0	20.7	27.2		25.0	35.0
75th percentile	39.0	40.0	32.0	37.5		40.0	40.0
Mean	28.1	27.4	22.8	26.5		26.2	30.8
Standard deviation	11.6	11.7	11.5	12.0		11.9	10.8
Mode	40.0	40.0	40.0	40.0		40.0	40.0
		Statistical significance: $F(5, 940) = 8.8, p = .000$ <u>Conclusion:</u> There is adequate evidence from the data to say that the means vary by facility type.					

19. If you are paid per home visit, indicate your typical per-visit rate.  
 Analyses limited to respondents who met the following criteria:  
 ❖ CCC-SLP  
 ❖ Paid primarily per home visit  
 ❖ Per visit rate of at least \$1

Per-visit wage	Facility Type						
	All Facility Types (n = 209)	General Medical/VA/ LTAC Hospital (n = 0)	Home Health/ Client's Home (n = 167)	Outpatient Clinic/Office (n = 38)	Pediatric Hospital (n = 0)	Rehab Hospital (n = 0)	Skilled Nursing Facility (n = 0)
25th percentile	\$55.00	(n < 25)	\$59.00	\$41.81	(n < 25)	(n < 25)	(n < 25)
50th percentile (Median)	\$65.00		\$68.27	\$60.00			
75th percentile	\$80.00		\$80.00	\$80.90			
Mean	\$69.46		\$70.84	\$64.13			
Standard deviation	\$24.22		\$21.72	\$31.49			
Mode	\$60.00		\$65.00	\$60.00			
		Statistical significance: $F(2, 201) = 1.2, p = .299$ <u>Conclusion:</u> There is not enough evidence from the data to say that the responses vary by facility type.					

**Professional Services: Clinical Service Providers Only**

20. Of the time that you spend providing clinical services, approximately what percentage is spent with the following age groups? <i>Total must equal 100%.</i> Analyses limited to respondents who met the following criteria: ❖ CCC-SLP ❖ Employed full time or part time ❖ Clinical service provider							
Age Groups	Facility Type						
	All Facility Types (n = 1,582)	General Medical/VA/LTAC Hospital (n = 254)	Home Health/Client's Home (n = 301)	Outpatient Clinic/Office (n = 429)	Pediatric Hospital (n = 65)	Rehab Hospital (n = 111)	Skilled Nursing Facility (n = 383)
<b>Infant–toddler</b>							
Mean	16.0	4.6	40.5	19.2	42.2	2.1	0.5
Standard deviation	28.0	14.7	42.5	19.9	28.3	7.6	3.8
		Statistical significance: $F(5, 1536) = 138.8, p = .000$ <u>Conclusion:</u> There is adequate evidence from the data to say that the means vary by facility type.					
<b>Preschool</b>							
Mean	12.2	2.9	11.3	28.1	29.9	3.7	0.6
Standard deviation	19.7	9.4	20.0	21.2	17.8	11.4	4.5
		Statistical significance: $F(5, 1536) = 171.6, p = .000$ <u>Conclusion:</u> There is adequate evidence from the data to say that the means vary by facility type.					
(Question 20 continues on next page.)							

20. (cont'd) Of the time that you spend providing clinical services, approximately what percentage is spent with the following age groups? *Total must equal 100%.*

Analyses limited to respondents who met the following criteria:

- ❖ CCC-SLP
- ❖ Employed full time or part time
- ❖ Clinical service provider

Age Groups	Facility Type						
	All Facility Types (n = 1,582)	General Medical/VA/LTAC Hospital (n = 254)	Home Health/Client's Home (n = 301)	Outpatient Clinic/Office (n = 429)	Pediatric Hospital (n = 65)	Rehab Hospital (n = 111)	Skilled Nursing Facility (n = 383)
<b>School Age</b>							
Mean	11.5	3.4	8.0	27.9	26.0	5.3	0.8
Standard deviation	19.9	9.9	17.5	23.3	19.8	13.8	5.3
		Statistical significance: $F(5, 1536) = 150.2, p = .000$ <u>Conclusion:</u> There is adequate evidence from the data to say that the means vary by facility type.					
<b>Adult</b>							
Mean	60.3	89.1	40.2	24.8	2.0	88.9	98.1
Standard deviation	46.0	24.9	47.5	37.0	5.4	26.2	10.0
		Statistical significance: $F(5, 1536) = 346.5, p = .000$ <u>Conclusion:</u> There is adequate evidence from the data to say that the means vary by facility type.					

*If you provide services to pediatric clients (infants through school age), answer Q. 21. If you provide services to adults, answer Q. 22. Answer Qs. 21 and 22 if you provide services to both age groups.*

21. Of the time that you spend providing PEDIATRIC services, approximately what percentage is spent in the following areas?  
*Total must equal 100%.*

Analyses limited to respondents who met the following criteria:

- ❖ CCC-SLP
- ❖ Employed full time or part time
- ❖ Clinical service provider

Pediatric Services	Facility Type						
	All Facility Types (n = 780)	General Medical/VA/ LTAC Hospital (n = 78)	Home Health/ Client's Home (n = 197)	Outpatient Clinic/Office (n = 360)	Pediatric Hospital (n = 64)	Rehab Hospital (n = 24)	Skilled Nursing Facility (n = 36)
<b>Augmentative and Alternative Communication (AAC)</b>							
Mean	5.8	2.7	5.4	6.6	8.4	(n < 25)	2.5
Standard deviation	12.1	11.1	9.8	12.2	18.1		8.6
Statistical significance: $F(5, 754) = 2.5, p = .027$ <u>Conclusion:</u> There is adequate evidence from the data to say that the means vary by facility type.							
<b>Autism Spectrum Disorder</b>							
Mean	17.4	8.8	19.6	20.0	15.4	(n < 25)	8.2
Standard deviation	18.4	17.5	18.5	18.2	18.8		14.1
Statistical significance: $F(5, 754) = 8.9, p = .000$ <u>Conclusion:</u> There is adequate evidence from the data to say that the means vary by facility type.							
(Question 21 continues on next page.)							

21. (cont'd) Of the time that you spend providing PEDIATRIC services, approximately what percentage is spent in the following areas? *Total must equal 100%.*

Analyses limited to respondents who met the following criteria:

- ❖ CCC-SLP
- ❖ Employed full time or part time
- ❖ Clinical service provider

Pediatric Services	Facility Type						
	All Facility Types (n = 780)	General Medical/VA/ LTAC Hospital (n = 78)	Home Health/ Client's Home (n = 197)	Outpatient Clinic/Office (n = 360)	Pediatric Hospital (n = 64)	Rehab Hospital (n = 24)	Skilled Nursing Facility (n = 36)
<b>Cognitive-Communication</b>							
Mean	11.5	11.8	16.6	8.8	10.0	(n < 25)	7.2
Standard deviation	18.3	25.3	21.3	13.6	16.3		13.4
Statistical significance: $F(5, 754) = 7.4, p = .000$ <u>Conclusion:</u> There is adequate evidence from the data to say that the means vary by facility type.							
<b>Fluency</b>							
Mean	2.3	2.1	1.2	3.2	1.6	(n < 25)	0.7
Standard deviation	6.2	5.2	4.0	7.6	5.6		3.8
Statistical significance: $F(5, 754) = 3.6, p = .003$ <u>Conclusion:</u> There is adequate evidence from the data to say that the means vary by facility type.							
(Question 21 continues on next page.)							

21. (cont'd) Of the time that you spend providing PEDIATRIC services, approximately what percentage is spent in the following areas? *Total must equal 100%.*

Analyses limited to respondents who met the following criteria:

- ❖ CCC-SLP
- ❖ Employed full time or part time
- ❖ Clinical service provider

Pediatric Services	Facility Type						
	All Facility Types (n = 780)	General Medical/VA/ LTAC Hospital (n = 78)	Home Health/ Client's Home (n = 197)	Outpatient Clinic/Office (n = 360)	Pediatric Hospital (n = 64)	Rehab Hospital (n = 24)	Skilled Nursing Facility (n = 36)
<b>Language and Literacy</b>							
Mean	21.3	15.9	22.6	23.1	12.7	(n < 25)	27.3
Standard deviation	19.9	21.1	21.0	18.3	14.6		28.3
		Statistical significance: $F(5, 754) = 5.5, p = .000$ <u>Conclusion:</u> There is adequate evidence from the data to say that the means vary by facility type.					
<b>Speech Sound Disorders</b>							
Mean	21.1	19.1	18.9	23.9	12.4	(n < 25)	22.2
Standard deviation	19.4	24.1	18.7	18.2	13.3		24.4
		Statistical significance: $F(5, 754) = 4.9, p = .000$ <u>Conclusion:</u> There is adequate evidence from the data to say that the means vary by facility type.					
(Question 21 continues on next page.)							

21. (cont'd) Of the time that you spend providing PEDIATRIC services, approximately what percentage is spent in the following areas? *Total must equal 100%.*

Analyses limited to respondents who met the following criteria:

- ❖ CCC-SLP
- ❖ Employed full time or part time
- ❖ Clinical service provider

Pediatric Services	Facility Type						
	All Facility Types (n = 780)	General Medical/VA/ LTAC Hospital (n = 78)	Home Health/ Client's Home (n = 197)	Outpatient Clinic/Office (n = 360)	Pediatric Hospital (n = 64)	Rehab Hospital (n = 24)	Skilled Nursing Facility (n = 36)
<b>Swallowing and Feeding</b>							
Mean	16.0	34.1	13.8	9.8	35.3	(n < 25)	13.3
Standard deviation	25.9	42.1	19.2	17.7	36.5		23.0
		Statistical significance: $F(5, 754) = 22.1, p = .000$ <u>Conclusion:</u> There is adequate evidence from the data to say that the means vary by facility type.					
<b>Voice/Resonance</b>							
Mean	2.5	4.2	0.6	3.2	3.6	(n < 25)	0.6
Standard deviation	11.1	17.9	3.7	12.6	10.8		2.9
		Statistical significance: $F(5, 754) = 2.1, p = .067$ <u>Conclusion:</u> There is not enough evidence from the data to say that the responses vary by facility type.					
(Question 21 continues on next page.)							



21. (cont'd) Of the time that you spend providing PEDIATRIC services, approximately what percentage is spent in the following areas? *Total must equal 100%.*

Analyses limited to respondents who met the following criteria:

- ❖ CCC-SLP
- ❖ Employed full time or part time
- ❖ Clinical service provider

Pediatric Services	Facility Type						
	All Facility Types (n = 780)	General Medical/VA/ LTAC Hospital (n = 78)	Home Health/ Client's Home (n = 197)	Outpatient Clinic/Office (n = 360)	Pediatric Hospital (n = 64)	Rehab Hospital (n = 24)	Skilled Nursing Facility (n = 36)
	Other						
Mean	2.2	1.3	1.3	1.5	0.7	(n < 25)	18.0
Standard deviation	12.1	8.7	8.5	7.6	4.9		38.4
	Statistical significance: $F(5, 754) = 15.0, p = .000$ <u>Conclusion:</u> There is adequate evidence from the data to say that the means vary by facility type.						

22. Of the time that you spend providing ADULT services, approximately what percentage is spent in the following areas?  
*Total must equal 100%.*

Analyses limited to respondents who met the following criteria:

- ❖ CCC-SLP
- ❖ Employed full time or part time
- ❖ Clinical service provider

Adult Services	Facility Type						
	All Facility Types (n = 1,074)	General Medical/VA/LTAC Hospital (n = 221)	Home Health/Client's Home (n = 146)	Outpatient Clinic/Office (n = 206)	Pediatric Hospital (n = 14)	Rehab Hospital (n = 101)	Skilled Nursing Facility (n = 357)
<b>AAC</b>							
Mean	2.9	1.4	4.9	5.3	(n < 25)	2.2	1.4
Standard deviation	10.8	3.2	14.7	16.0		7.8	2.8
		Statistical significance: $F(5, 1039) = 15.0, p = .000$ <u>Conclusion:</u> There is adequate evidence from the data to say that the means vary by facility type.					
<b>Accent Modification/Communication Effectiveness</b>							
Mean	0.3	0.2	0.2	0.7	(n < 25)	0.1	0.1
Standard deviation	3.0	1.4	1.2	4.0		0.8	1.1
		Statistical significance: $F(5, 1039) = 2.2, p = .049$ <u>Conclusion:</u> There is adequate evidence from the data to say that the means vary by facility type.					
(Question 22 continues on next page.)							

22. (cont'd) Of the time that you spend providing ADULT services, approximately what percentage is spent in the following areas? *Total must equal 100%.*

Analyses limited to respondents who met the following criteria:

- ❖ CCC-SLP
- ❖ Employed full time or part time
- ❖ Clinical service provider

Adult Services	Facility Type						
	All Facility Types (n = 1,074)	General Medical/VA/ LTAC Hospital (n = 221)	Home Health/ Client's Home (n = 146)	Outpatient Clinic/Office (n = 206)	Pediatric Hospital (n = 14)	Rehab Hospital (n = 101)	Skilled Nursing Facility (n = 357)
<b>Aphasia</b>							
Mean	14.3	11.9	15.8	18.7	(n < 25)	18.5	12.0
Standard deviation	13.3	8.9	12.4	21.4		12.1	8.9
		Statistical significance: $F(5, 1039) = 12.2, p = .000$ <u>Conclusion:</u> There is adequate evidence from the data to say that the means vary by facility type.					
<b>Cognitive-Communication: Dementia</b>							
Mean	15.0	6.0	16.8	6.1	(n < 25)	10.1	26.7
Standard deviation	16.4	8.5	16.0	12.8		12.0	16.0
		Statistical significance: $F(5, 1039) = 95.5, p = .000$ <u>Conclusion:</u> There is adequate evidence from the data to say that the means vary by facility type.					
(Question 22 continues on next page.)							

22. (cont'd) Of the time that you spend providing ADULT services, approximately what percentage is spent in the following areas? *Total must equal 100%.*

Analyses limited to respondents who met the following criteria:

- ❖ CCC-SLP
- ❖ Employed full time or part time
- ❖ Clinical service provider

Adult Services	Facility Type						
	All Facility Types (n = 1,074)	General Medical/VA/ LTAC Hospital (n = 221)	Home Health/ Client's Home (n = 146)	Outpatient Clinic/Office (n = 206)	Pediatric Hospital (n = 14)	Rehab Hospital (n = 101)	Skilled Nursing Facility (n = 357)
<b>Cognitive-Communication: Traumatic Brain Injury</b>							
Mean	7.9	8.1	5.9	11.4	(n < 25)	16.7	3.5
Standard deviation	13.9	12.5	12.5	18.6		15.9	6.4
Statistical significance: $F(5, 1039) = 21.6, p = .000$ <u>Conclusion:</u> There is adequate evidence from the data to say that the means vary by facility type.							
<b>Cognitive-Communication: Other</b>							
Mean	5.6	3.8	6.8	6.8	(n < 25)	7.3	4.9
Standard deviation	13.1	8.4	15.9	20.0		12.3	9.0
Statistical significance: $F(5, 1039) = 2.2, p = .052$ <u>Conclusion:</u> There is not enough evidence from the data to say that the responses vary by facility type.							
(Question 22 continues on next page.)							

22. (cont'd) Of the time that you spend providing ADULT services, approximately what percentage is spent in the following areas? *Total must equal 100%.*

Analyses limited to respondents who met the following criteria:

- ❖ CCC-SLP
- ❖ Employed full time or part time
- ❖ Clinical service provider

Adult Services	Facility Type						
	All Facility Types (n = 1,074)	General Medical/VA/LTAC Hospital (n = 221)	Home Health/Client's Home (n = 146)	Outpatient Clinic/Office (n = 206)	Pediatric Hospital (n = 14)	Rehab Hospital (n = 101)	Skilled Nursing Facility (n = 357)
<b>Motor Speech</b>							
Mean	6.7	6.1	6.6	8.4	(n < 25)	7.0	5.6
Standard deviation	9.5	9.1	10.4	13.3		7.2	5.6
		Statistical significance: $F(5, 1039) = 2.8, p = .015$ <u>Conclusion:</u> There is adequate evidence from the data to say that the means vary by facility type.					
<b>Swallowing</b>							
Mean	39.1	56.8	35.7	21.4	(n < 25)	34.0	41.7
Standard deviation	24.3	23.9	21.8	23.6		21.0	17.0
		Statistical significance: $F(5, 1039) = 61.4, p = .000$ <u>Conclusion:</u> There is adequate evidence from the data to say that the means vary by facility type.					
(Question 22 continues on next page.)							

22. (cont'd) Of the time that you spend providing ADULT services, approximately what percentage is spent in the following areas? *Total must equal 100%.*

Analyses limited to respondents who met the following criteria:

- ❖ CCC-SLP
- ❖ Employed full time or part time
- ❖ Clinical service provider

Adult Services	Facility Type						
	All Facility Types (n = 1,074)	General Medical/VA/ LTAC Hospital (n = 221)	Home Health/ Client's Home (n = 146)	Outpatient Clinic/Office (n = 206)	Pediatric Hospital (n = 14)	Rehab Hospital (n = 101)	Skilled Nursing Facility (n = 357)
<b>Voice/Resonance</b>							
Mean	6.0	5.2	5.1	13.6	(n < 25)	3.9	3.6
Standard deviation	13.5	11.0	8.3	24.0		5.8	6.9
		Statistical significance: $F(5, 1039) = 16.8, p = .000$ <u>Conclusion:</u> There is adequate evidence from the data to say that the means vary by facility type.					
<b>Other</b>							
Mean	2.1	0.6	2.3	7.7	(n < 25)	0.4	0.6
Standard deviation	12.5	3.2	13.4	23.9		1.5	6.2
		Statistical significance: $F(5, 1039) = 10.6, p = .000$ <u>Conclusion:</u> There is adequate evidence from the data to say that the means vary by facility type.					

23. Do you, or does your practice, deliver services in any of the following alternative payment models? *Select all that apply.*  
 (Percentages; order of responses was changed from alphabetic to descending order of frequencies.)

Analyses limited to respondents who met the following criteria:

- ❖ CCC-SLP
- ❖ Employed full time or part time
- ❖ Primarily clinical service provider

Payment Models	Facility Type						
	All Facility Types (n = 1,643)	General Medical/VA/ LTAC Hospital (n ≥ 258)	Home Health/ Client's Home (n = 316)	Outpatient Clinic/Office (n ≥ 450)	Pediatric Hospital (n ≥ 67)	Rehab Hospital (n = 114)	Skilled Nursing Facility (n ≥ 394)
Bundled payment/ episode of care	14.7	15.1	15.5	4.0	6.0	14.0	27.8
		Statistical significance: $\chi^2(5) = 99.6, p = .000$ , Cramer's $V = .249$ <u>Conclusion:</u> There is adequate evidence from the data to say that the means vary by facility type.					
Accountable care organization (ACO)	2.2	2.3	1.9	1.3	0.0	1.8	3.8
		Statistical significance: $\chi^2(5) = 8.1, p = .151$ <u>Conclusion:</u> There is not enough evidence from the data to say that the responses vary by facility type.					
Patient-centered medical home (PCMH)	1.2	1.6	1.3	0.7	1.5	0.9	1.3
		Too many cells (42%) have an expected count of fewer than 5. <u>Conclusion:</u> Too little data are available in some facility categories to test whether responses vary by facility type.					
No alternative payment methods	22.9	15.1	25.6	33.7	19.1	16.7	16.2
		Statistical significance: $\chi^2(5) = 53.0, p = .000$ , Cramer's $V = .182$ <u>Conclusion:</u> There is adequate evidence from the data to say that the means vary by facility type.					
Don't know	54.4	64.1	52.5	50.3	65.7	64.9	49.4
		Statistical significance: $\chi^2(5) = 25.8, p = .000$ , Cramer's $V = .127$ <u>Conclusion:</u> There is adequate evidence from the data to say that the means vary by facility type.					

**Productivity: Clinical Service Providers Only**

24. Do you have a productivity requirement? (Percentages) Analyses limited to respondents who met the following criteria: ❖ CCC-SLP ❖ Employed full time or part time ❖ Clinical service provider							
Productivity Requirement	Facility Type						
	All Facility Types (n = 1,590)	General Medical/VA/ LTAC Hospital (n = 254)	Home Health/ Client's Home (n = 303)	Outpatient Clinic/Office (n = 435)	Pediatric Hospital (n = 66)	Rehab Hospital (n = 108)	Skilled Nursing Facility (n = 384)
Yes	64.2	75.6	36.0	45.1	84.8	75.0	94.8
No (SKIP to Q. 28.)	35.8	24.4	64.0	54.9	15.2	25.0	5.2
		Statistical significance: $\chi^2(5) = 363.6$ , $p = .000$ , Cramer's $V = .484$ <u>Conclusion:</u> There is adequate evidence from the data to say that the means vary by facility type.					





25. What is your productivity requirement?

Analyses limited to respondents who met the following criteria:

- ❖ CCC-SLP
- ❖ Employed full time or part time
- ❖ Clinical service provider
- ❖ Answered “Yes” to Q. 24

Productivity Requirement	Facility Type						
	All Facility Types (n = 962)	General Medical/VA/ LTAC Hospital (n = 169)	Home Health/ Client’s Home (n = 90)	Outpatient Clinic/Office (n = 180)	Pediatric Hospital (n = 53)	Rehab Hospital (n = 75)	Skilled Nursing Facility (n = 360)
25th percentile	75.0	70.0	67.0	68.3	60.0	75.0	80.0
50th percentile (Median)	80.0	80.0	80.0	77.5	70.0	75.0	85.0
75th percentile	85.0	85.0	85.0	83.8	75.0	85.0	89.7
Mean	78.4	77.5	73.4	76.2	69.4	78.3	84.5
Standard deviation	12.4	13.4	19.7	11.8	11.3	11.1	5.8
Mode	80.0	80.0	80.0	80.0	60.0	75.0	85.0
		Statistical significance: $F(5, 921) = 31.8, p = .000$ <u>Conclusion:</u> There is adequate evidence from the data to say that the means vary by facility type.					

26. How important is meeting the productivity requirement at your job? *Circle one number.*

Analyses limited to respondents who met the following criteria:

- ❖ CCC-SLP
- ❖ Employed full time or part time
- ❖ Clinical service provider
- ❖ Answered “Yes” to Q. 24

Importance	Facility Type						
	All Facility Types (n = 1,004)	General Medical/VA/ LTAC Hospital (n = 189)	Home Health/ Client’s Home (n = 107)	Outpatient Clinic/Office (n = 187)	Pediatric Hospital (n = 55)	Rehab Hospital (n = 81)	Skilled Nursing Facility (n = 362)
1 = <i>Not at all important</i>	0.5	1.6	0.9	0.0	0.0	1.2	0.0
2	4.7	5.8	4.7	6.4	1.8	9.9	2.5
3	19.7	22.2	23.4	24.6	18.2	25.9	14.1
4	33.7	34.4	31.8	33.2	43.6	33.3	31.8
5 = <i>Very important</i>	41.4	36.0	39.3	35.8	36.4	29.6	51.7
		Too many cells (27%) have an expected count of fewer than 5. <u>Conclusion:</u> Too little data are available in some facility categories to test whether responses vary by facility type.					

27. Which of the following activities count toward your productivity calculation when the patient is not present? *Select all that apply.* (Percentages; order of responses was changed from alphabetic to descending order of frequencies.)

Analyses limited to respondents who met the following criteria:

- ❖ CCC-SLP
- ❖ Employed full time or part time
- ❖ Clinical service provider
- ❖ Answered “Yes” to Q. 24

Activities	Facility Type						
	All Facility Types (n = 1,021)	General Medical/VA/ LTAC Hospital (n ≥ 192)	Home Health/ Client’s Home (n = 109)	Outpatient Clinic/Office (n ≥ 195)	Pediatric Hospital (n ≥ 55)	Rehab Hospital (n ≥ 80)	Skilled Nursing Facility (n ≥ 364)
Clinical team meetings.	15.5	15.1	31.2	16.3	17.9	20.0	9.6
	Statistical significance: $\chi^2(5) = 31.6, p = .000$ , Cramer’s $V = .178$ <u>Conclusion:</u> There is adequate evidence from the data to say that the means vary by facility type.						
In-services or informal staff training sessions.	14.7	13.0	28.4	20.0	16.1	18.8	7.7
	Statistical significance: $\chi^2(5) = 36.5, p = .000$ , Cramer’s $V = .191$ <u>Conclusion:</u> There is adequate evidence from the data to say that the means vary by facility type.						
Documentation.	13.2	15.1	15.6	13.8	16.4	12.5	10.4
	Statistical significance: $\chi^2(5) = 4.2, p = .526$ <u>Conclusion:</u> There is not enough evidence from the data to say that the responses vary by facility type.						
Care coordination activities.	10.6	8.9	17.4	6.6	10.9	11.1	11.5
	Statistical significance: $\chi^2(5) = 9.6, p = .088$ <u>Conclusion:</u> There is not enough evidence from the data to say that the responses vary by facility type.						

27. (cont'd) Which of the following activities count toward your productivity calculation when the patient is not present? *Select all that apply.* (Percentages; order of responses was changed from alphabetic to descending order of frequencies.)

Analyses limited to respondents who met the following criteria:

- ❖ CCC-SLP
- ❖ Employed full time or part time
- ❖ Clinical service provider
- ❖ Answered “Yes” to Q. 24

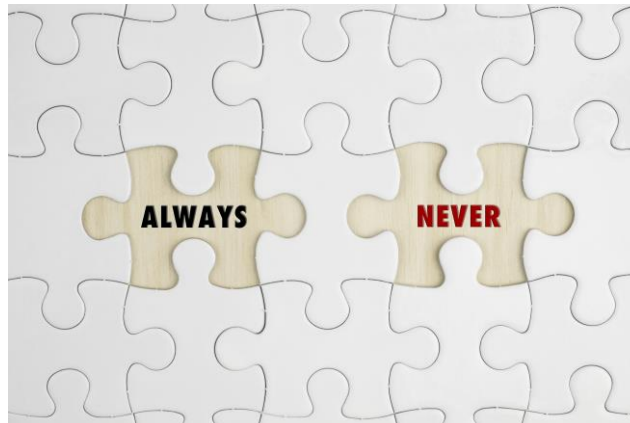
Activities	Facility Type						
	All Facility Types (n = 1,021)	General Medical/VA/ LTAC Hospital (n ≥ 192)	Home Health/ Client's Home (n = 109)	Outpatient Clinic/Office (n ≥ 195)	Pediatric Hospital (n ≥ 55)	Rehab Hospital (n ≥ 80)	Skilled Nursing Facility (n ≥ 364)
Other activities.	4.8	3.6	10.1	6.7	3.6	7.5	2.5
	Statistical significance: $\chi^2(5) = 14.4$ , $p = .013$ , Cramer's $V = .120$ <u>Conclusion:</u> There is adequate evidence from the data to say that the means vary by facility type.						
Nothing counts when patient is not present.	68.3	65.6	55.0	63.6	61.8	65.4	77.3
	Statistical significance: $\chi^2(5) = 26.3$ , $p = .000$ , Cramer's $V = .162$ <u>Conclusion:</u> There is adequate evidence from the data to say that the means vary by facility type.						

28. How often do you complete documentation at point of service (i.e., with patient present)?

Analyses limited to respondents who met the following criteria:

- ❖ CCC-SLP
- ❖ Employed full time or part time
- ❖ Clinical service provider

Documentation	Facility Type						
	All Facility Types (n = 1,570)	General Medical/VA/ LTAC Hospital (n = 248)	Home Health/ Client's Home (n = 297)	Outpatient Clinic/Office (n = 432)	Pediatric Hospital (n = 65)	Rehab Hospital (n = 110)	Skilled Nursing Facility (n = 380)
Never	17.5	30.6	12.8	19.2	33.8	20.0	7.4
Rarely	38.0	50.0	30.6	39.8	46.2	47.3	31.1
Usually	32.0	12.5	32.7	28.7	16.9	23.6	51.3
Always	12.5	6.9	23.9	12.3	3.1	9.1	10.3
		Statistical significance: $\chi^2(15) = 211.2, p = .000$ , Cramer's $V = .214$ <u>Conclusion:</u> There is adequate evidence from the data to say that the means vary by facility type.					



29. IF YOU ARE AN HOURLY EMPLOYEE, did you perform unpaid, “off-the-clock” work during 2016?

Analyses limited to respondents who met the following criteria:

- ❖ CCC-SLP
- ❖ Employed full time or part time
- ❖ Clinical service provider

Off-the-Clock Work	Facility Type						
	All Facility Types	General Medical/VA/ LTAC Hospital	Home Health/ Client’s Home	Outpatient Clinic/Office	Pediatric Hospital	Rehab Hospital	Skilled Nursing Facility
	<i>n</i> = 1,407	<i>n</i> = 220	<i>n</i> = 257	<i>n</i> = 374	<i>n</i> = 53	<i>n</i> = 92	<i>n</i> = 375
Yes—typically daily	20.9	11.8	27.6	23.5	7.5	12.0	22.9
Yes—typically a few times a week	14.2	11.8	12.8	14.2	11.3	13.0	17.3
Yes—typically a few times a month	17.5	15.9	11.7	16.0	17.0	19.6	23.7
No—never	23.8	40.5	7.0	17.1	17.0	27.2	32.3
Not an hourly employee	23.5	20.0	40.9	29.1	47.2	28.3	3.7
		Statistical significance: $\chi^2(20) = 233.5$ , $p = .000$ , Cramer’s $V = .206$ <u>Conclusion</u> : There is adequate evidence from the data to say that the means vary by facility type.					
Recoded, deleting “Not an hourly employee” response							
	<i>n</i> = 1,077	<i>n</i> = 176	<i>n</i> = 152	<i>n</i> = 265	<i>n</i> = 28	<i>n</i> = 66	<i>n</i> = 361
Yes—typically daily	27.3	14.8	46.7	33.2	14.3	16.7	23.8
Yes—typically a few times a week	18.6	14.8	21.7	20.0	21.4	18.2	18.0
Yes—typically a few times a month	22.9	19.9	19.7	22.6	32.1	27.3	24.7
No—never	31.2	50.6	11.8	24.2	32.1	37.9	33.5
		Statistical significance: $\chi^2(15) = 92.0$ , $p = .000$ , Cramer’s $V = .171$ <u>Conclusion</u> : There is adequate evidence from the data to say that the means vary by facility type.					

**Cultural and Linguistic Diversity: Clinical Service Providers Only**

30. In the past 12 months, which clinical approaches have you used in service delivery to address cultural and linguistic influences on communication? *Select all that apply.* (Percentages; order of responses was changed from alphabetic to descending order of frequencies.)

Analyses limited to respondents who met the following criteria:

- ❖ CCC-SLP
- ❖ Primarily clinical service provider

Clinical Approaches	Facility Type						
	All Facility Types (n = 1,655)	General Medical/VA/ LTAC Hospital (n ≥ 259)	Home Health/ Client's Home (n ≥ 319)	Outpatient Clinic/Office (n = 454)	Pediatric Hospital (n = 68)	Rehab Hospital (n ≥ 114)	Skilled Nursing Facility (n = 396)
Used interpreter/cultural broker	48.3	76.5	41.3	42.7	80.9	71.1	30.3
	Statistical significance: $\chi^2(5) = 198.9$ , $p = .000$ , Cramer's $V = .351$ <u>Conclusion:</u> There is adequate evidence from the data to say that the means vary by facility type.						
Modified assessment strategies/procedures	34.5	39.8	27.2	31.9	47.1	46.1	35.9
	Statistical significance: $\chi^2(5) = 23.8$ , $p = .000$ , Cramer's $V = .121$ <u>Conclusion:</u> There is adequate evidence from the data to say that the means vary by facility type.						
Acquired translated materials	27.5	39.2	21.9	20.0	52.9	43.5	25.3
	Statistical significance: $\chi^2(5) = 72.8$ , $p = .000$ , Cramer's $V = .213$ <u>Conclusion:</u> There is adequate evidence from the data to say that the means vary by facility type.						
Translated therapy tools	20.0	25.1	14.1	14.1	20.6	40.0	22.2
	Statistical significance: $\chi^2(5) = 51.0$ , $p = .000$ , Cramer's $V = .178$ <u>Conclusion:</u> There is adequate evidence from the data to say that the means vary by facility type.						

(Question 30 continues on next page.)

30. (cont'd) In the past 12 months, which clinical approaches have you used in service delivery to address cultural and linguistic influences on communication? *Select all that apply.* (Percentages; order of responses was changed from alphabetic to descending order of frequencies.)

Analyses limited to respondents who met the following criteria:

- ❖ CCC-SLP
- ❖ Primarily clinical service provider

Clinical Approaches	Facility Type						
	All Facility Types (n = 1,655)	General Medical/VA/ LTAC Hospital (n ≥ 259)	Home Health/ Client's Home (n ≥ 319)	Outpatient Clinic/Office (n = 454)	Pediatric Hospital (n = 68)	Rehab Hospital (n ≥ 114)	Skilled Nursing Facility (n = 396)
Translated written materials, including consumer information	19.1	22.3	16.9	13.4	39.7	30.7	18.9
	Statistical significance: $\chi^2(5) = 40.5$ , $p = .000$ , Cramer's $V = .159$ <u>Conclusion:</u> There is adequate evidence from the data to say that the means vary by facility type.						
Referral to bilingual service providers	19.0	16.9	16.3	27.1	41.2	26.1	7.6
	Statistical significance: $\chi^2(5) = 80.5$ , $p = .000$ , Cramer's $V = .223$ <u>Conclusion:</u> There is adequate evidence from the data to say that the means vary by facility type.						
None of the above	28.3	13.8	35.4	30.8	8.8	11.3	36.6
	Statistical significance: $\chi^2(5) = 79.0$ , $p = .000$ , Cramer's $V = .221$ <u>Conclusion:</u> There is adequate evidence from the data to say that the means vary by facility type.						



31. In the past 12 months, have you needed to request funding for interpreter or translator services?

Analyses limited to respondents who met the following criteria:

- ❖ CCC-SLP
- ❖ Primarily clinical service provider

Funding	Facility Type						
	All Facility Types (n = 1,593)	General Medical/VA/LTAC Hospital (n = 251)	Home Health/Client's Home (n = 305)	Outpatient Clinic/Office (n = 437)	Pediatric Hospital (n = 65)	Rehab Hospital (n = 110)	Skilled Nursing Facility (n = 385)
Yes	8.7	4.4	10.5	10.5	9.2	15.5	6.2
No (SKIP to Q. 33.)	91.3	95.6	89.5	89.5	90.8	84.5	93.8
		Statistical significance: $\chi^2(5) = 18.1$ , $p = .003$ , Cramer's $V = .108$ <u>Conclusion:</u> There is adequate evidence from the data to say that the means vary by facility type.					



32. IF YES, has funding for interpreter or translator services been reduced or denied for the following reasons? *Select all that apply.* (Percentages; order of responses was changed from alphabetic to descending order of frequencies.)

Analyses limited to respondents who met the following criteria:

- ❖ CCC-SLP
- ❖ Primarily clinical service provider
- ❖ Answered “Yes” to Q. 31

Interpreter or Translator Services	Facility Type						
	All Facility Types (n = 139)	General Medical/VA/ LTAC Hospital (n = 11)	Home Health/ Client's Home (n = 32)	Outpatient Clinic/Office (n = 46)	Pediatric Hospital (n ≥ 6)	Rehab Hospital (n ≥ 16)	Skilled Nursing Facility (n ≥ 23)
Family members provided interpreter or translator services.	37.2	(n < 25)	31.3	30.4	(n < 25)	(n < 25)	(n < 25)
	Too many cells (25%) have an expected count of fewer than 5. <u>Conclusion:</u> Too little data are available in some facility categories to test whether responses vary by facility type.						
Referral was made to a bilingual service provider.	21.6	(n < 25)	31.3	23.9	(n < 25)	(n < 25)	(n < 25)
	Too many cells (25%) have an expected count of fewer than 5. <u>Conclusion:</u> Too little data are available in some facility categories to test whether responses vary by facility type.						
Budget was insufficient to cover interpreter or translator services.	15.4	(n < 25)	28.1	6.5	(n < 25)	(n < 25)	(n < 25)
	Too many cells (42%) have an expected count of fewer than 5. <u>Conclusion:</u> Too little data are available in some facility categories to test whether responses vary by facility type.						
(Question 32 continues on next page.)							

32. (cont'd) IF YES, has funding for interpreter or translator services been reduced or denied for the following reasons? *Select all that apply.* (Percentages; order of responses was changed from alphabetic to descending order of frequencies.)

Analyses limited to respondents who met the following criteria:

- ❖ CCC-SLP
- ❖ Primarily clinical service provider
- ❖ Answered “Yes” to Q. 31

Interpreter or Translator Services	Facility Type						
	All Facility Types (n = 139)	General Medical/VA/ LTAC Hospital (n = 11)	Home Health/ Client's Home (n = 32)	Outpatient Clinic/Office (n = 46)	Pediatric Hospital (n ≥ 6)	Rehab Hospital (n ≥ 16)	Skilled Nursing Facility (n ≥ 23)
Alternate service delivery models were required.	14.8	(n < 25)	3.1	19.6	(n < 25)	(n < 25)	(n < 25)
	Too many cells (42%) have an expected count of fewer than 5. <u>Conclusion:</u> Too little data are available in some facility categories to test whether responses vary by facility type.						
English-only services were provided.	11.1	(n < 25)	18.8	2.2	(n < 25)	(n < 25)	(n < 25)
	Too many cells (42%) have an expected count of fewer than 5. <u>Conclusion:</u> Too little data are available in some facility categories to test whether responses vary by facility type.						
Funding was denied for intervention.	6.4	(n < 25)	0.0	10.9	(n < 25)	(n < 25)	(n < 25)
	Too many cells (50%) have an expected count of fewer than 5. <u>Conclusion:</u> Too little data are available in some facility categories to test whether responses vary by facility type.						
Funding was denied for assessments.	3.1	(n < 25)	0.0	2.2	(n < 25)	(n < 25)	(n < 25)
	Too many cells (50%) have an expected count of fewer than 5. <u>Conclusion:</u> Too little data are available in some facility categories to test whether responses vary by facility type.						
(Question 32 continues on next page.)							

32. (cont'd) IF YES, has funding for interpreter or translator services been reduced or denied for the following reasons? *Select all that apply.* (Percentages; order of responses was changed from alphabetic to descending order of frequencies.)

Analyses limited to respondents who met the following criteria:

- ❖ CCC-SLP
- ❖ Primarily clinical service provider
- ❖ Answered “Yes” to Q. 31

Interpreter or Translator Services	Facility Type						
	All Facility Types (n = 139)	General Medical/VA/ LTAC Hospital (n = 11)	Home Health/ Client's Home (n = 32)	Outpatient Clinic/Office (n = 46)	Pediatric Hospital (n ≥ 6)	Rehab Hospital (n ≥ 16)	Skilled Nursing Facility (n ≥ 23)
Funding was contraindicated by patient's communication disorder.	1.8	(n < 25)	0.0	0.0	(n < 25)	(n < 25)	(n < 25)
	Too many cells (50%) have an expected count of fewer than 5. <u>Conclusion:</u> Too little data are available in some facility categories to test whether responses vary by facility type.						
Funding was contraindicated by patient's age.	0.0	(n < 25)	0.0	0.0	(n < 25)	(n < 25)	(n < 25)
	No statistics were computed because the variable was a constant.						

## Demographics

33. Identify any graduate degrees you have earned. *Count only actual earned degrees—not equivalencies or certificates—and do not include degrees expected but not yet conferred. Select all that apply.*

Analyses limited to respondents who met the following criterion:

❖ CCC-SLP

Degrees	Facility Type						
	All Facility Types	General Medical/VA/LTAC Hospital	Home Health/Client's Home	Outpatient Clinic/Office	Pediatric Hospital	Rehab Hospital	Skilled Nursing Facility
	<i>n</i> = 2,019	<i>n</i> = 282	<i>n</i> = 351	<i>n</i> = 538	<i>n</i> = 79	<i>n</i> = 130	<i>n</i> ≥ 460
Master's	93.5	95.4	95.7	95.2	93.7	95.4	96.3
PhD	1.1	2.1	0.9	1.3	2.5	0.8	0.4
Other doctorate	0.3	0.4	0.0	0.4	0.0	0.0	0.4
<b>Recoded, combining doctoral degrees</b>							
	<i>n</i> = 1,907	<i>n</i> = 275	<i>n</i> = 338	<i>n</i> = 516	<i>n</i> = 76	<i>n</i> = 124	<i>n</i> = 448
Master's	98.5	97.1	99.1	98.3	97.4	99.2	99.1
Doctorate	1.5	2.9	0.9	1.7	2.6	0.8	0.9
		Too many cells (25%) have an expected count of fewer than 5. <u>Conclusion:</u> Too little data are available in some facility categories to test whether responses vary by facility type.					

34. How many years have you been employed in the speech-language pathology profession? *Exclude your clinical fellowship. Round to the nearest full year. Enter "0" if you have never been employed as an SLP.*

Analyses limited to respondents who met the following criterion:

❖ CCC-SLP

Experience	Facility Type						
	All Facility Types (n = 1,916)	General Medical/VA/ LTAC Hospital (n = 276)	Home Health/ Client's Home (n = 341)	Outpatient Clinic/Office (n = 518)	Pediatric Hospital (n = 76)	Rehab Hospital (n = 124)	Skilled Nursing Facility (n = 450)
25th percentile	8.0	8.0	10.0	9.0	6.0	7.0	7.0
50th percentile (Median)	15.0	16.0	17.0	16.0	11.5	15.0	13.0
75th percentile	25.0	26.0	25.0	26.0	21.9	24.8	23.0
Mean	17.7	18.0	18.6	18.5	15.0	17.1	16.0
Standard deviation	11.5	11.5	10.9	11.9	11.0	11.4	10.9
Mode	8.0	4.0	20.0	8.0	5.0	4.0	8.0
		Statistical significance: $F(5, 1778) = 3.9, p = .002$ <u>Conclusion:</u> There is adequate evidence from the data to say that the means vary by facility type.					

35. In what year were you born? (Note: Data were converted to age.)

Analyses limited to respondents who met the following criterion:

❖ CCC-SLP

Age	Facility Type						
	All Facility Types (n = 1,896)	General Medical/VA/ LTAC Hospital (n = 268)	Home Health/ Client's Home (n = 339)	Outpatient Clinic/Office (n = 514)	Pediatric Hospital (n = 75)	Rehab Hospital (n = 123)	Skilled Nursing Facility (n = 446)
25th percentile	34.0	33.0	36.0	34.0	31.0	34.0	32.0
50th percentile (Median)	43.0	42.0	45.0	43.0	38.0	42.0	40.0
75th percentile	54.0	53.0	55.0	56.0	48.0	51.4	52.0
Mean	44.4	43.8	45.9	45.3	40.5	43.2	42.8
Standard deviation	12.3	12.2	11.7	12.9	11.0	11.6	12.0
Mode	36.0	29.0	33.0	36.0	30.0	35.0	32.0
		Statistical significance: $F(5, 1759) = 5.0, p = .000$ <u>Conclusion:</u> There is adequate evidence from the data to say that the means vary by facility type.					

36. In what year do you think you are most likely to retire from the profession?

Analyses limited to respondents who met the following criterion:

❖ CCC-SLP

Retirement Year	Facility Type						
	All Facility Types (n = 1,685)	General Medical/VA/ LTAC Hospital (n = 244)	Home Health/ Client's Home (n = 299)	Outpatient Clinic/Office (n = 458)	Pediatric Hospital (n = 62)	Rehab Hospital (n = 108)	Skilled Nursing Facility (n = 400)
25th percentile	2027	2027	2025	2027	2032	2027	2027
50th percentile (Median)	2036	2037	2034	2037	2040	2037	2037
75th percentile	2045	2045	2042	2045	2048	2045	2047
Mean	2036	2036	2034	2036	2039	2036	2037
Standard deviation	12 years	12 years	11 years	11 years	10 years	11 years	12 years
Mode	2037	2037	2040	2037	2050	2037	2050
		Statistical significance: $F(5, 1564) = 3.6, p = .003$ <u>Conclusion:</u> There is adequate evidence from the data to say that the means vary by facility type.					



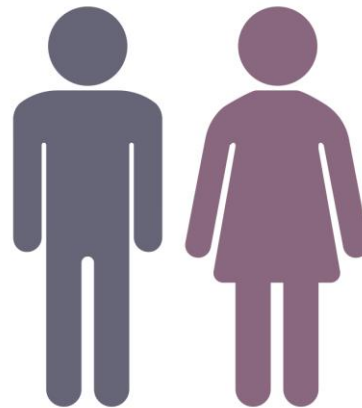


37. Are you (Percentages)

Analyses limited to respondents who met the following criterion:

❖ CCC-SLP

Sex	Facility Type						
	All Facility Types (n = 2,019)	General Medical/VA/ LTAC Hospital (n = 282)	Home Health/ Client's Home (n = 351)	Outpatient Clinic/Office (n = 538)	Pediatric Hospital (n = 79)	Rehab Hospital (n = 130)	Skilled Nursing Facility (n = 460)
Female	95.6	94.7	93.7	96.7	97.5	96.9	95.9
Male	4.4	5.3	6.3	3.3	2.5	3.1	4.1
		Statistical significance: $\chi^2(5) = 6.2, p = .284$ <u>Conclusion:</u> There is not enough evidence from the data to say that the responses vary by facility type.					



38. How much unpaid student debt do you have? Enter "0" if none.

Analyses limited to respondents who met the following criteria:

- ❖ CCC-SLP
- ❖ Student debt of at least \$1

Student Debt	Facility Type						
	All Facility Types (n = 570)	General Medical/VA/ LTAC Hospital (n = 74)	Home Health/ Client's Home (n = 96)	Outpatient Clinic/Office (n = 158)	Pediatric Hospital (n = 27)	Rehab Hospital (n = 41)	Skilled Nursing Facility (n = 144)
25th percentile	\$15,000	\$20,297	\$13,382	\$16,737	\$18,040	\$14,559	\$18,231
50th percentile (Median)	\$30,644	\$39,303	\$30,000	\$35,000	\$40,000	\$30,583	\$30,000
75th percentile	\$59,357	\$62,029	\$50,000	\$56,956	\$70,000	\$59,937	\$58,204
Mean	\$42,831	\$44,790	\$37,609	\$45,391	\$44,346	\$43,534	\$43,163
Standard deviation	\$37,798	\$32,569	\$35,855	\$40,659	\$30,023	\$41,613	\$36,580
Mode	\$30,000	\$30,000	\$25,000	\$50,000	\$20,000	\$15,000	\$30,000
		Statistical significance: $F(5, 533) = 0.6, p = .723$ <u>Conclusion:</u> There is not enough evidence from the data to say that the responses vary by facility type.					



39. Which one of the following best describes where you work?

Analyses limited to respondents who met the following criteria:

- ❖ CCC-SLP
- ❖ Employed full time or part time
- ❖ Excludes the response category “Not employed”

Response	Facility Type						
	All Facility Types (n = 1,797)	General Medical/VA/ LTAC Hospital (n = 271)	Home Health/ Client's Home (n = 329)	Outpatient Clinic/Office (n = 507)	Pediatric Hospital (n = 76)	Rehab Hospital (n = 123)	Skilled Nursing Facility (n = 440)
City/urban area	41.9	56.5	33.1	39.1	71.1	55.3	32.5
Suburban area	39.0	28.8	44.1	45.4	27.6	36.6	37.5
Rural area	19.2	14.8	22.8	15.6	1.3	8.1	30.0
Not employed (SKIP to end.)	Excluded from analyses						
	Statistical significance: $\chi^2(10) = 124.0, p = .000$ Cramer's $V = .188$ <u>Conclusion:</u> There is adequate evidence from the data to say that the responses vary by facility type.						

40. In what state is your primary employment FACILITY located? Use two-letter postal abbreviation (e.g., OH for Ohio).

Analyses limited to respondents who met the following criteria:

- ❖ CCC-SLP
- ❖ Employed full time or part time

Region and Division	Facility Type						
	All Facility Types (n = 1,891)	General Medical/VA/ LTAC Hospital (n ≥ 281)	Home Health/ Client's Home (n ≥ 347)	Outpatient Clinic/Office (n = 534)	Pediatric Hospital (n = 78)	Rehab Hospital (n = 129)	Skilled Nursing Facility (n ≥ 458)
<b>Northeast</b>	<b>17.0</b>	<b>18.1</b>	<b>21.6</b>	<b>12.5</b>	<b>12.8</b>	<b>20.2</b>	<b>17.0</b>
Middle Atlantic	12.1	13.1	15.5	8.4	11.5	14.7	11.5
New England	4.9	5.3	6.0	3.9	1.3	6.2	5.4
<b>Midwest</b>	<b>24.6</b>	<b>30.2</b>	<b>19.3</b>	<b>22.7</b>	<b>33.3</b>	<b>22.5</b>	<b>27.3</b>
East North Central	16.7	18.4	15.2	14.8	24.4	15.5	18.1
West North Central	7.9	11.7	4.3	7.9	7.7	7.0	9.4
<b>South</b>	<b>41.0</b>	<b>33.5</b>	<b>41.5</b>	<b>43.3</b>	<b>34.6</b>	<b>37.2</b>	<b>45.6</b>
East South Central	6.7	4.6	6.0	4.7	1.3	7.8	11.3
South Atlantic	20.9	16.6	18.6	24.2	21.8	16.3	23.1
West South Central	13.4	12.4	16.9	14.6	11.5	12.4	11.1
<b>West</b>	<b>17.4</b>	<b>18.1</b>	<b>17.6</b>	<b>21.5</b>	<b>19.2</b>	<b>20.2</b>	<b>10.0</b>
Mountain	7.0	6.4	8.9	8.8	7.7	8.5	4.1
Pacific	10.3	11.7	8.6	12.7	12.8	11.6	5.9
		FOR 4 REGIONS: $\chi^2(15) = 53.4, p = .000$ , Cramer's $V = .099$ FOR 9 DIVISIONS: $\chi^2(40) = 94.8, p = .000$ , Cramer's $V = .102$ <u>Conclusion:</u> There is adequate evidence from the data to say that the responses vary by facility type.					

Division frequencies may not equal those of the region, and column sums may not equal 100% because of rounding. List of states in each division and region are located in the Appendix.

41. How many years have you been working for your current primary employer? Enter "0" if none.

Analyses limited to respondents who met the following criteria:

- ❖ CCC-SLP
- ❖ Employed full time or part time

Years	Facility Type						
	All Facility Types (n = 1,815)	General Medical/VA/LTAC Hospital (n = 275)	Home Health/Client's Home (n = 334)	Outpatient Clinic/Office (n = 511)	Pediatric Hospital (n = 74)	Rehab Hospital (n = 121)	Skilled Nursing Facility (n = 446)
25th percentile	3.0	3.0	2.0	4.0	4.9	3.0	2.0
50th percentile <b>(Median)</b>	6.0	7.0	5.0	8.0	8.0	7.0	4.0
75th percentile	12.0	15.0	11.0	13.0	15.0	15.0	8.0
Mean	8.6	9.8	8.1	10.1	10.9	10.1	5.8
Standard deviation	8.2	8.6	7.7	9.2	8.7	8.8	5.5
Mode	1.0	1.0	1.0	1.0	5.0	3.0	1.0
		Statistical significance: $F(5, 1755) = 18.5, p = .000$ <u>Conclusion:</u> There is adequate evidence from the data to say that the means vary by facility type.					

## **Appendix**

*Facilities comprising the six health care facilities for which data are provided in the frequency tables:*

“General Medical/VA/LTAC Hospital”

- General medical hospital
- Veterans Affairs (VA) hospital
- Long-term acute care hospital (LTAC) hospital

“Home Health Agency or Client’s Home”

“Outpatient Clinic/Office”

- Nonresidential health care facility
- Private MD’s office
- Speech-language pathologist’s or audiologist’s office
- Speech and hearing center or clinic
- Speech/language clinic
- Outpatient rehabilitation center

“Pediatric Hospital”

“Rehab Hospital”

“SNF”

- Skilled nursing facility

## Regions of the Country

### Northeast

- ◆ Middle Atlantic
  - New Jersey
  - New York
  - Pennsylvania
- ◆ New England
  - Connecticut
  - Maine
  - Massachusetts
  - New Hampshire
  - Rhode Island
  - Vermont

### South

- ◆ East South Central
  - Alabama
  - Kentucky
  - Mississippi
  - Tennessee
- ◆ South Atlantic
  - Delaware
  - District of Columbia
  - Florida
  - Georgia
  - Maryland
  - North Carolina
  - South Carolina
  - Virginia
  - West Virginia
- ◆ West South Central
  - Arkansas
  - Louisiana
  - Oklahoma
  - Texas

### Midwest

- ◆ East North Central
  - Illinois
  - Indiana
  - Michigan
  - Ohio
  - Wisconsin
- ◆ West North Central
  - Iowa
  - Kansas
  - Minnesota
  - Missouri
  - Nebraska
  - North Dakota
  - South Dakota

### West

- ◆ Mountain
  - Arizona
  - Colorado
  - Idaho
  - Montana
  - Nevada
  - New Mexico
  - Utah
  - Wyoming
- ◆ Pacific
  - Alaska
  - California
  - Hawaii
  - Oregon
  - Washington



Statistics used in the summary report include the following notations and descriptions:

Notation	Description
Response rate	<p>The percentage of individuals who were included in the sample minus any who were ineligible</p> $RR = \frac{(C + P)}{S - (Ret + I)}$ <p>Where</p> <ul style="list-style-type: none"> <li>RR = Response rate</li> <li>C = Number of completed surveys</li> <li>P = Number of partial surveys</li> <li>S = Sample size</li> <li>Ret = Ineligible because of retirement</li> <li>I = Ineligible for other reasons (e.g., does not work in health care, no longer in the field, on leave of absence)</li> </ul> $RR = \frac{2019}{4000 - (11 + 117)} = 52.1\%$
<i>n</i>	The number of sample members. In this report, the number of people who answered a particular question.
Mean	<p>A measure of central tendency; an average. Add all the values, and divide the total by the number of items.</p> <p>Example: <math>(1 + 1 + 7 + 34 + 88) / 5 = 26.2</math>      Mean = 26.2</p>
Standard deviation	<p>A statistic that shows the spread of scores in a distribution. Used with means. The larger the standard deviation, the more widely the scores are spread out around the mean.<sup>1</sup></p> <p>About 68% of the measurement is between 1 standard deviation greater than and 1 standard deviation smaller than the mean; 95% are plus/minus 2 standard deviations.</p> <p>Example: <math>(1 + 1 + 7 + 34 + 88)</math>      Standard deviation = 37.1</p> <p>Therefore, 68% of the responses are between -10.9 and 63.3 in the example.</p>
Median	<p>A measure of central tendency. Arrange the values in order, from lowest to highest. Select the value in the middle position.</p> <p>Example: 1, 1, 7, 34, 88      Median = 7</p>

